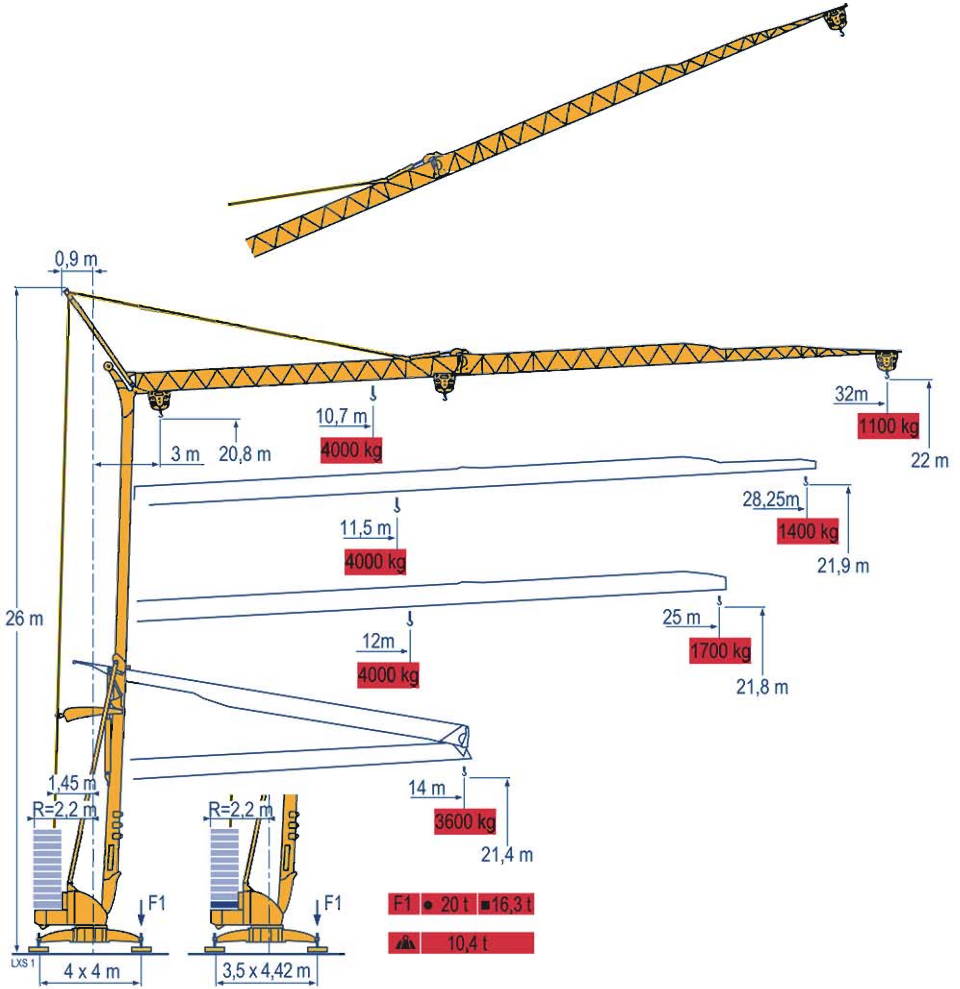
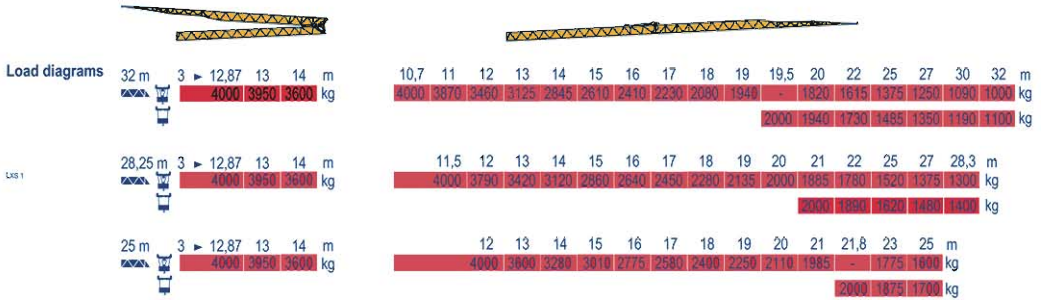


Potain IGO 36

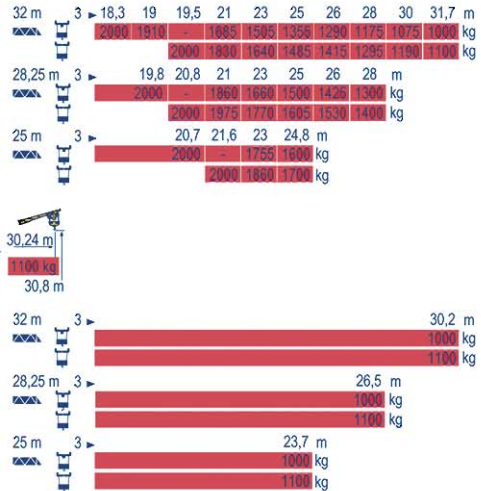
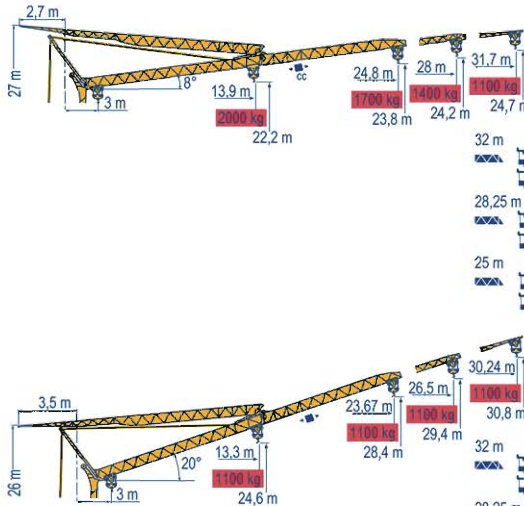


Potain IGO 36



Luffing jib

US 1



Igo 36



- Traversing trolley
- Traversing trolley and load diagrams
- Reactions in service
- Reactions out of service
- Without load, ballast (or transport axles), with maximum jib and maximum height.

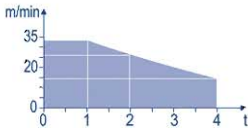
Potain IGO 36

Mechanisms

| | | [Icon] | | | | | [Icon] | | | | | ch - PS hp | kW | |
|--|-------------------------|------------------------|---------|------|--------|------|--------------------|------|------|------|------|---------------|-----|----|
| | 15 LVF 10 Optima | m/min | 3,6 | 18 | 30 | 49 | 66 | | | | | | 15 | 11 |
| | | kg | 2000 | 2000 | 2000 | 1100 | 500 | | | | | | | |
| | | m/min | 3,6 | 18 | 30 | 54 | 66 | 1,8 | 8,9 | 15 | 27 | 33 | | |
| | | kg | 2000 | 2000 | 2000 | 1000 | 500 | 4000 | 4000 | 4000 | 2000 | 1000 | | |
| | 3 DVF5 | m/min | 19 - 41 | | | | | | | | | 3 | 2,2 | |
| | RVF+41 | tr/min U/min rpm | 0 → 0,8 | | | | | | | | | 4 | 3 | |
| | | CEI 3Ø | [Icon] | | IEC 3Ø | | kVA | | | | | | | |
| | | 400 V (+6% -10%) 50 Hz | | | | | 15 LVF 10 : 22 kVA | | | | | | | |

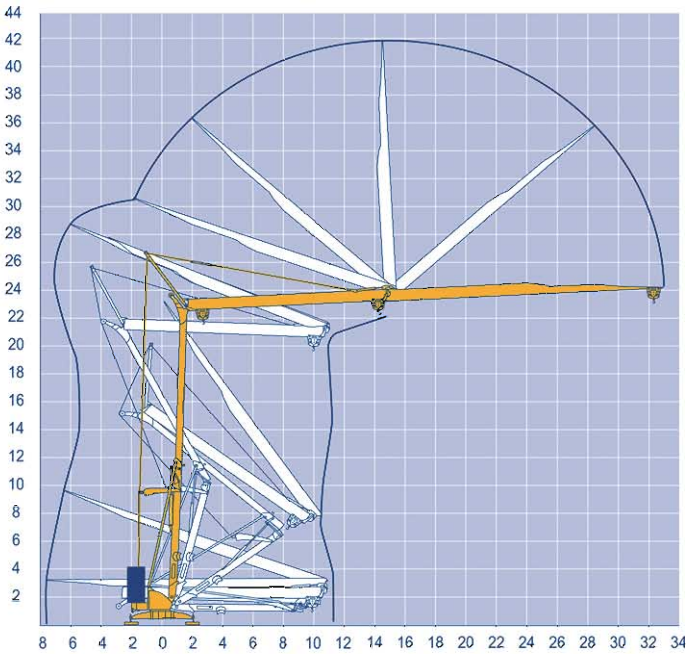
UX3

15 LVF 10 Optima



Erection

UX1



Igo 36

GB

Hoisting
Trolleying
Slewing

