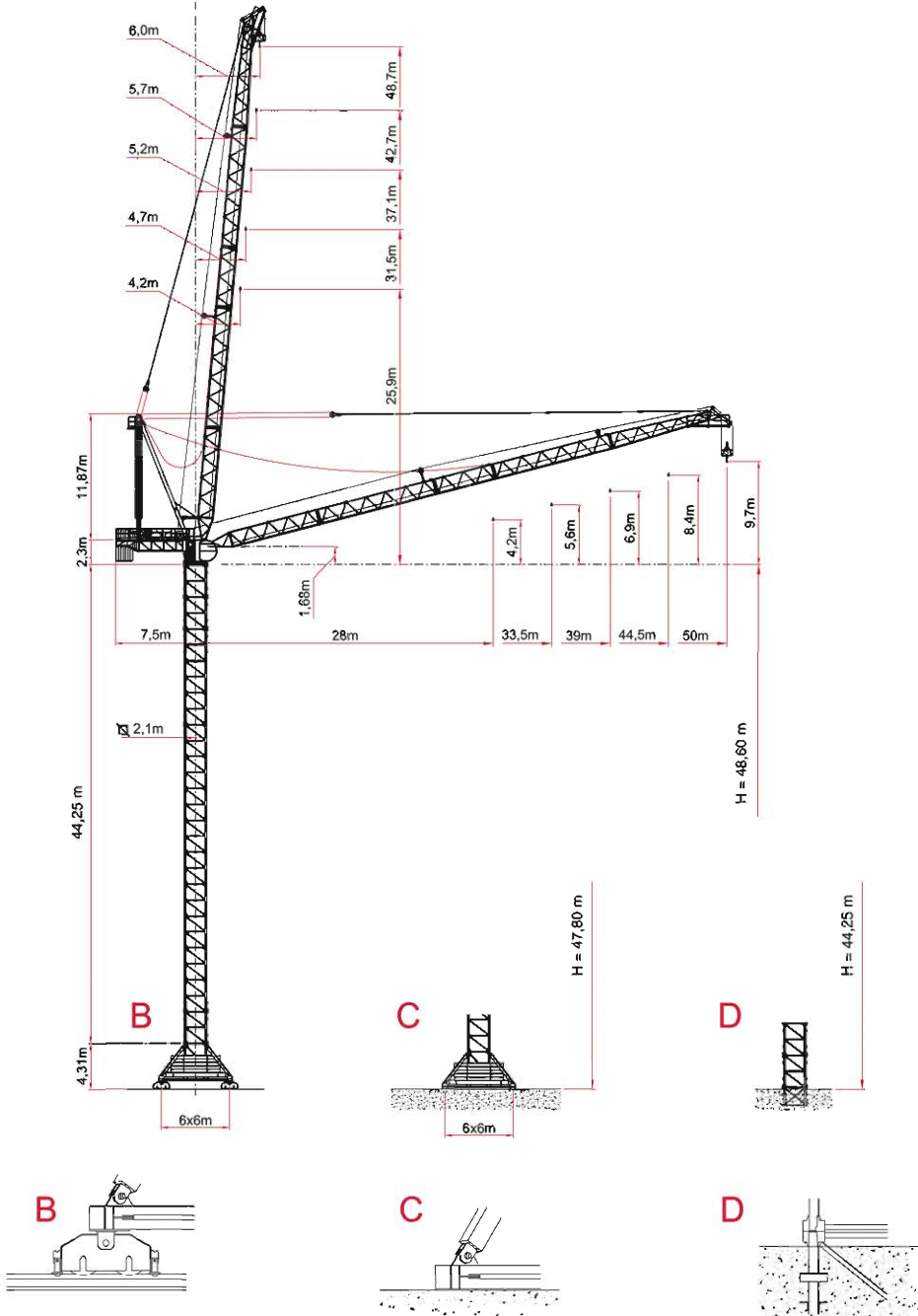




## Raimondi LR 120



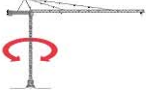
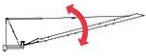
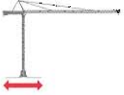
# Raimondi LR 120


## LOAD

Max s.w.l.		 12000 Kg.					 6000 Kg.				
Jib	m.	2,8	33,5	39	44,5	50	2,8	33,5	39	44,5	50
Max s.w.l. range from											
		m.					m.				
Radius (m.)	20	12000	12000	12000	12000	12000	6000	6000	6000	6000	6000
	12	11959	11929	11965	11983	11885	6000	6000	6000	6000	6000
	22	11261	11211	11225	11219	11104	6000	6000	6000	6000	6000
	23	10626	10557	10550	10523	10393	6000	6000	6000	6000	6000
	24	10046	9960	9934	9887	9743	6000	6000	6000	6000	6000
	25	9514	9411	9368	9304	9147	6000	6000	6000	6000	6000
	26	9023	8906	8847	8766	8598	6000	6000	6000	6000	6000
	27	8570	8440	8366	8270	8090	6000	6000	6000	6000	6000
	28	8150	8007	7920	7810	7620	6000	6000	6000	6000	6000
	29		7605	7505	7382	7183		6000	6000	6000	6000
	31		6881	6758	6611	6395		6000	6000	6000	6000
	33,5		6100	5952	5780	5546		6000	6000	6000	5791
	35			5525	5340	5096			5736	5564	5335
	37			5011	4809	4553			5216	5027	4785
	39			4550	4333	4067			4750	4536	4293
	41				3905	3630				4113	3850
	43				3518	3234				3721	3448
	44,5				3250	2960				3450	3171
	46					2705					2913
	48					2390					2593
50					2100					2300	

## Raimondi LR 120

### GENERAL TECHNICAL CHARACTERISTICS

		Speed	Power
Slewing		0 - 0,7 r.p.m.	2 x 4,0 Kw
Luffing		14,5 ° - 85 °	45 Kw
			55 Kw
Rail		18 m/min	2 x 4 Kw

Type		Power		Cable	Step	V <sub>2</sub>		V <sub>3</sub>	
		CV - ch Ps - Hp	KW			Load	Speed	Load	Speed
60 HP - S/10 VF		60	45	250 450 LB	1	5000	8	10000	4
					2	5000	18	10000	9
					3	5000	30	10000	15
					4	3500	48	7000	24
					5	2400	60	4800	30
						0 - 750 (*)	80 (*)	0 - 1500 (*)	40 (*)
75 HP - 6/12 VF		75	55	300 500 LB	1	6000	8	12000	4
					2	6000	24	12000	12
					3	6000	40	12000	20
					4	3600	64	7200	32
					5	2500	80	5000	40
						0 - 1000 (*)	104 (*)	0 - 2000 (*)	52 (*)

In compliance with the 2000/14/CE instruction on noise level

Total Installed power	H O I S T 45 Kw	H O I S T 55 Kw
	106 Kw	126 Kw