

Articulated Tower Crane

www.citylifting.co.uk

Mechanical					Motor power	Rope length
Hoisting	4 ton	2 ton	1 ton	0 ton	30 kW	240m
	45 m/min	65 m/min	85 m/min	100 m/min		
Luffing	0 → 40 m/min				15 kW	50m
Slewing	0 → 1.0 rpm				7.5 kW	
Safe Working Load	Max. load 4000kg at 21 metres					
	2000kg at 32 metres					
Minimum Out of Service Radius	4 metres					
Free Standing Height	32 metres on Tower size 1.260m ² (Other towers are available)					

Electrical	
Power Supply	400 – 480 volt 50 / 60 Hz
Power Consumption	75 kVA
Main Fuses	100 – 125 Amp (400V,50Hz)

General:

This type of crane is built for accurate lifting and high working speed. The out of service radius is only 4 metres, which makes it ideal for confined inner city sites and sites where air space is a major issue.

Drives:

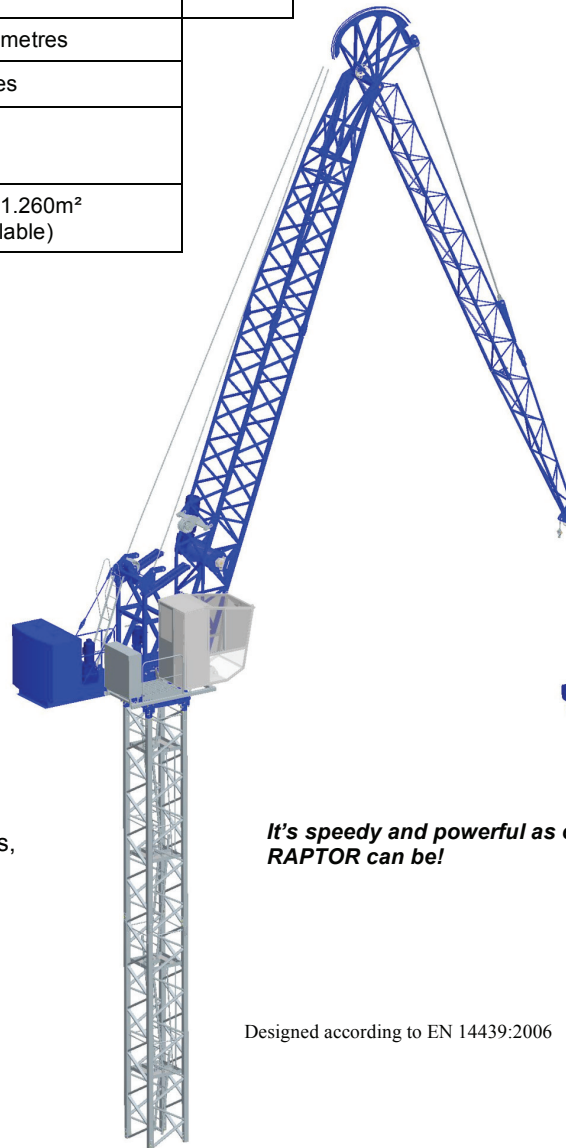
For optimum smoothness of the crane operations, all drives on board are controlled by PLCs and frequency inverters. All load and angle sensors are connected in a redundant control circuit, for total safety.

Comfortable Cab:

Thanks to its modern design, the operator has full visibility of the load and work area at all times.

Comfortable and ergonomically adjusting seat with controllers to maximise crane operator's day-to-day performance.

Display screen system which provides all the information the driver requires at a single glance.



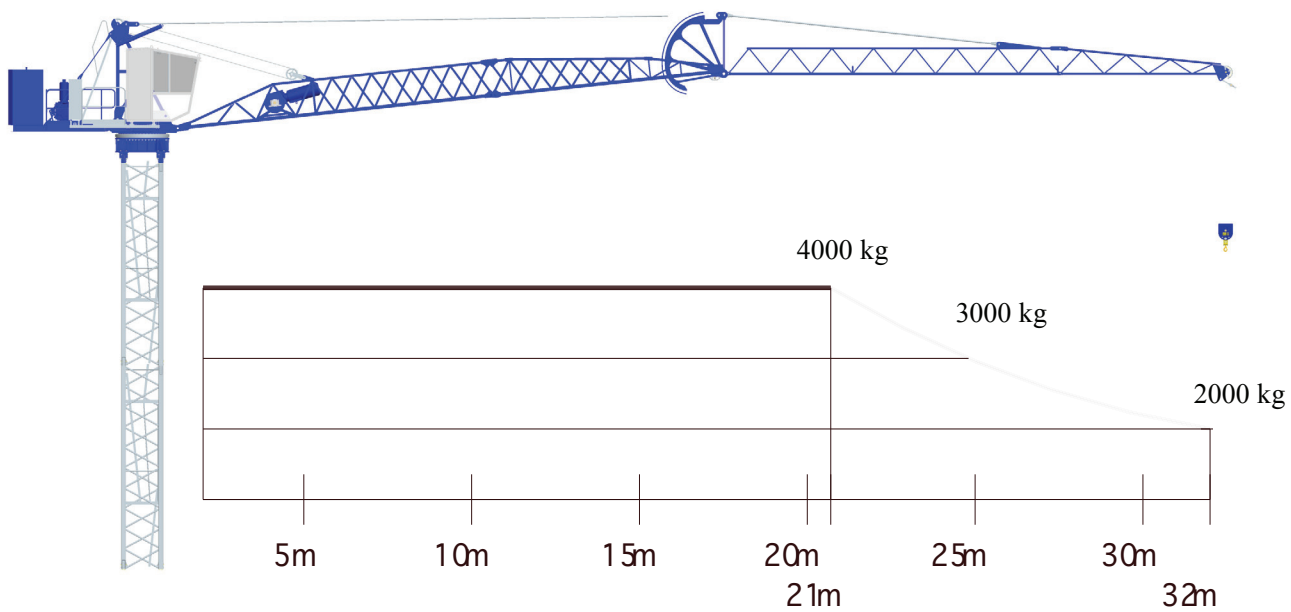
It's speedy and powerful as only a RAPTOR can be!

Designed according to EN 14439:2006

DISCLAIMER: Product introduction sheet supplied for reference purposes. Please see www.citylifting.co.uk for manufacturer detailed technical specification.

Articulated Tower Crane

www.citylifting.co.uk



DISCLAIMER: Product introduction sheet supplied for reference purposes. Please see www.citylifting.co.uk for manufacturer detailed technical specification.