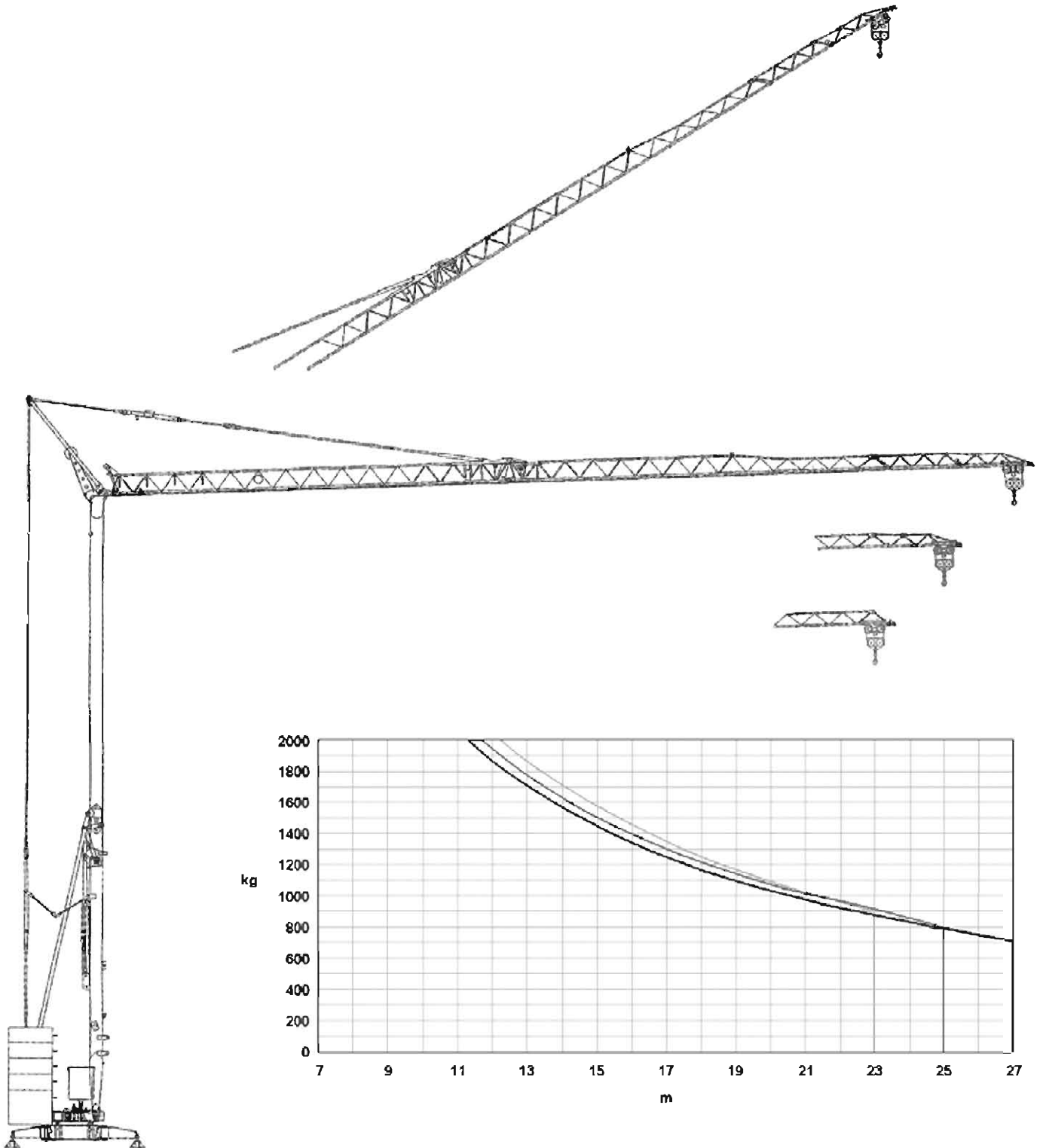
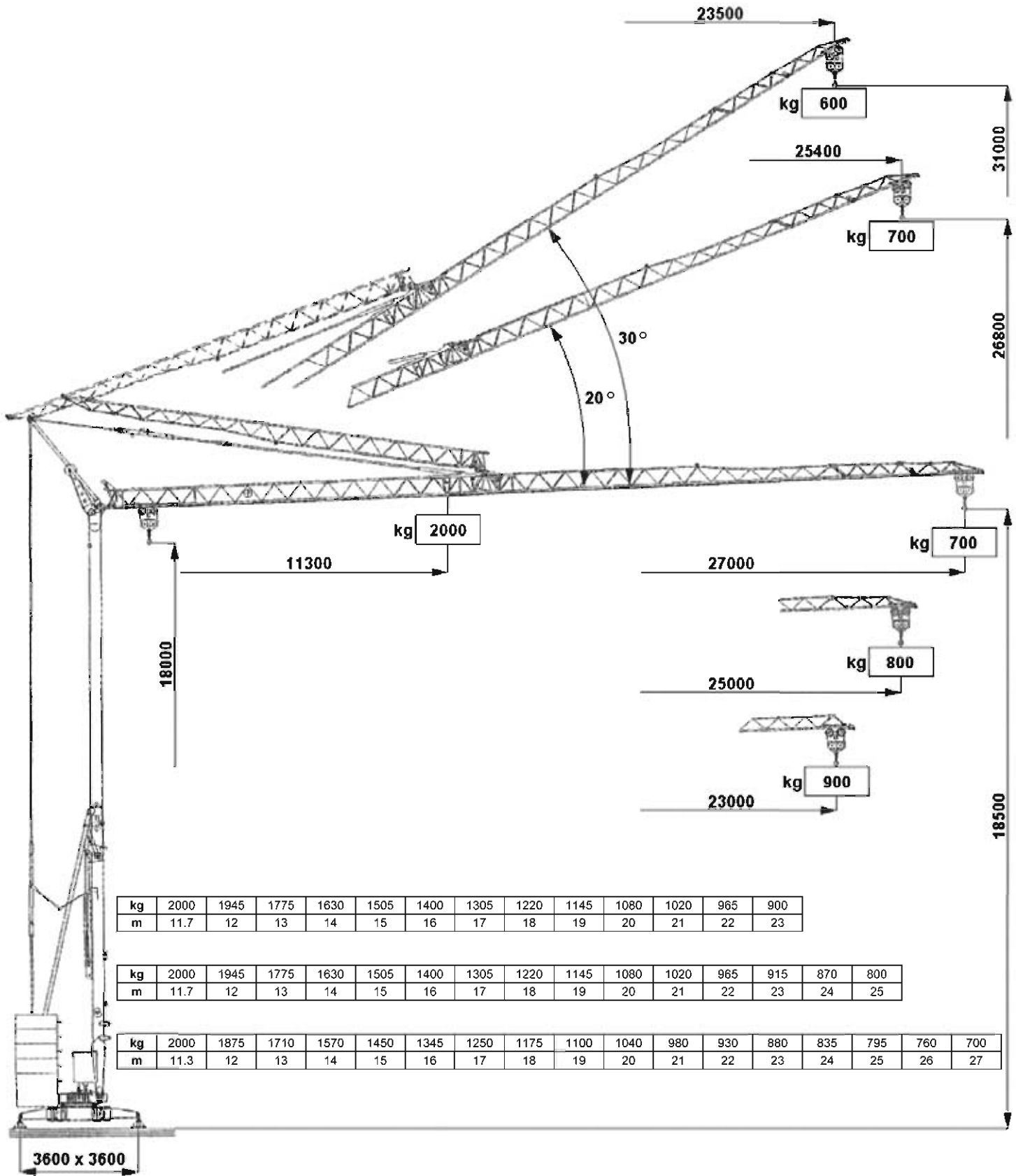


VC 27 Self Erecting Tower Crane



VC 27 Self Erecting Tower Crane



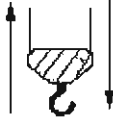
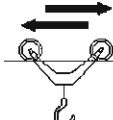





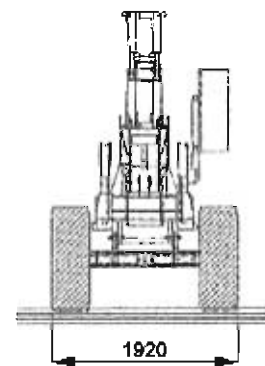
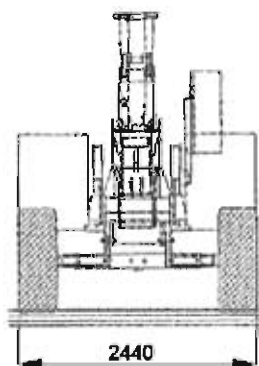
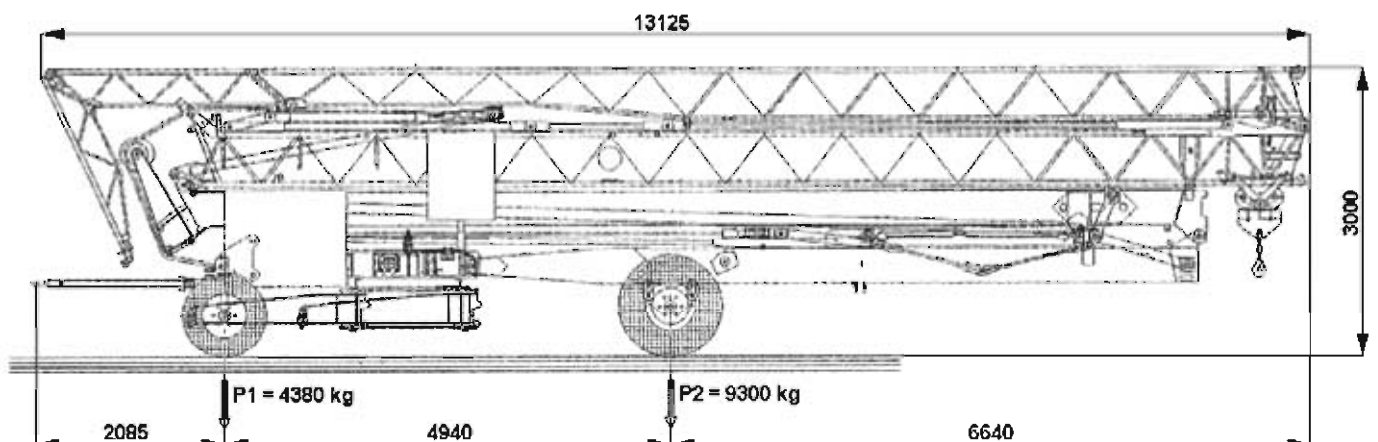
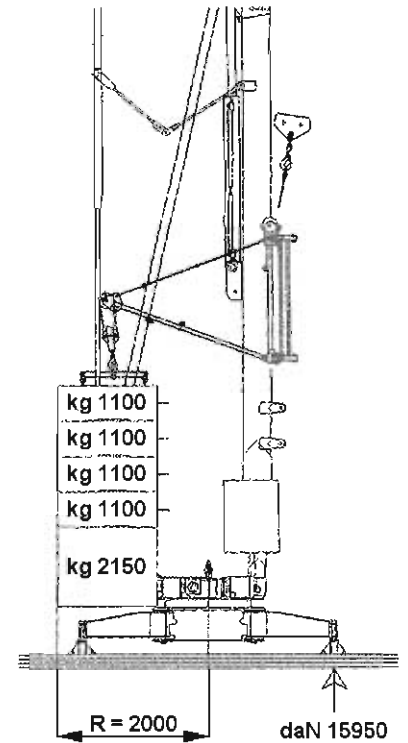
| | | | | | | | | | | | | | |
|----|------|------|------|------|------|------|------|------|------|------|------|-----|-----|
| kg | 2000 | 1945 | 1775 | 1630 | 1505 | 1400 | 1305 | 1220 | 1145 | 1080 | 1020 | 965 | 900 |
| m | 11.7 | 12 | 13 | 14 | 15 | 16 | 17 | 18 | 19 | 20 | 21 | 22 | 23 |

| | | | | | | | | | | | | | | | |
|----|------|------|------|------|------|------|------|------|------|------|------|-----|-----|-----|-----|
| kg | 2000 | 1945 | 1775 | 1630 | 1505 | 1400 | 1305 | 1220 | 1145 | 1080 | 1020 | 965 | 915 | 870 | 800 |
| m | 11.7 | 12 | 13 | 14 | 15 | 16 | 17 | 18 | 19 | 20 | 21 | 22 | 23 | 24 | 25 |

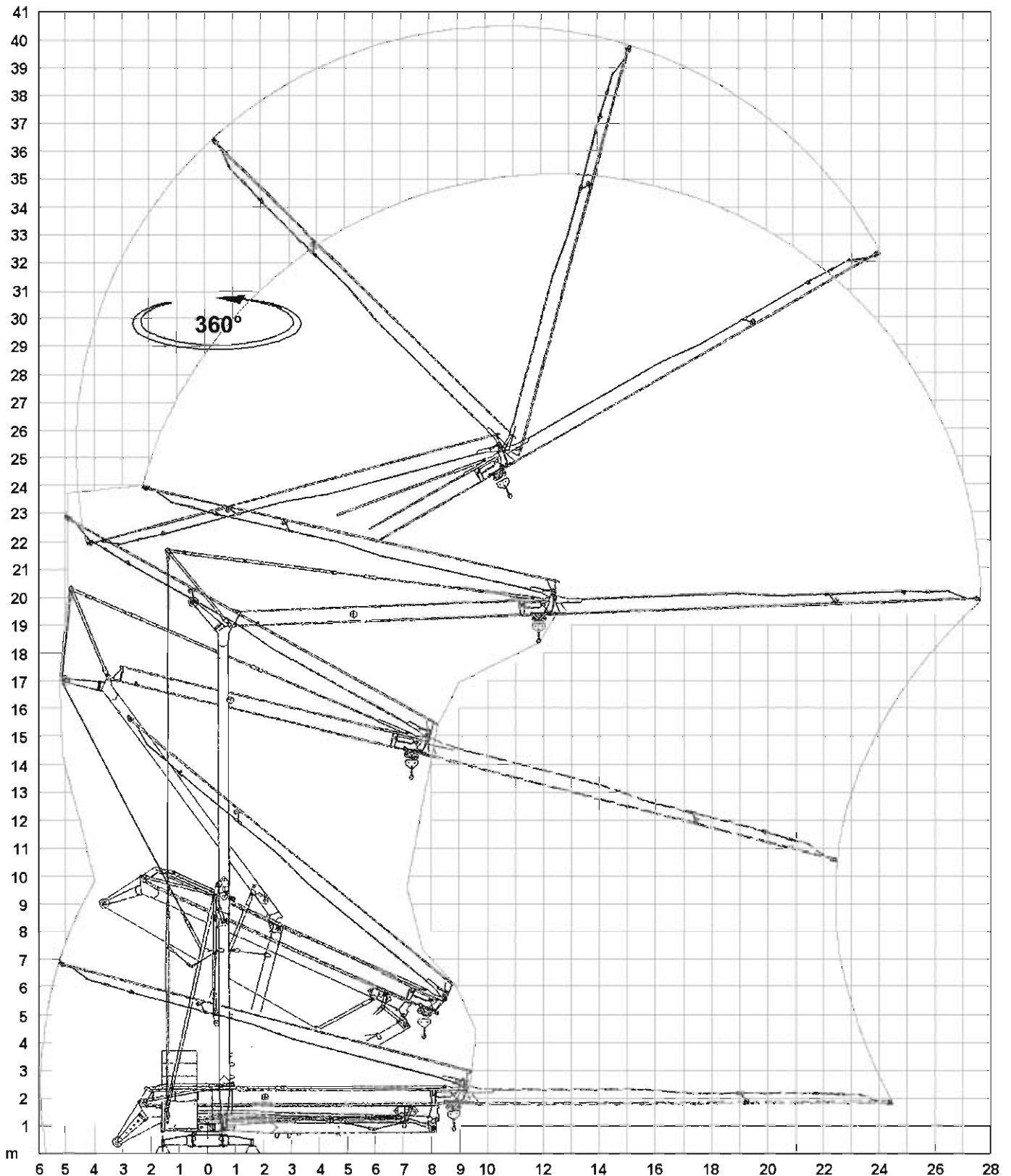
| | | | | | | | | | | | | | | | | | |
|----|------|------|------|------|------|------|------|------|------|------|-----|-----|-----|-----|-----|-----|-----|
| kg | 2000 | 1875 | 1710 | 1570 | 1450 | 1345 | 1250 | 1175 | 1100 | 1040 | 980 | 930 | 880 | 835 | 795 | 760 | 700 |
| m | 11.3 | 12 | 13 | 14 | 15 | 16 | 17 | 18 | 19 | 20 | 21 | 22 | 23 | 24 | 25 | 26 | 27 |

VC 27 Self Erecting Tower Crane

| | | | | |
|---|--------------|--|------|-----|
|  | 50 Hz |  380 V - 15 kVA | | |
| | V + 6% - 10% | | | |
|  | m/l' | ▶ | ▶▶ | ▶▶▶ |
| | kg | 4.5 | 18 | 36 |
| | KW | 2000 | 2000 | 800 |
|  | m/l' | ▶ | ▶▶ | |
| | kg | 18.5 | 37 | |
| | KW | 1.1 | 2.2 | |
|  | rpm | ▶ | ▶▶ | ▶▶▶ |
| | kg | 0.3 | 0.6 | 0.9 |
| | KW | 1.84 (Inverter) | | |
|  | min | ▶ | | |
| | kg | 8 | | |
| | KW | 3 | | |
|  | kg | 9280 | | |



VC 27 Self Erecting Tower Crane



STANDARD FEATURES

3-speed lifting and rotation with electronic control, galvanised structure, installation counterweight, pull-up modular jib, translation trolley, operation with folded jib, cable-operated pushbutton remote control, guard for slewing ring and mechanisms, designed to allow installation of self-ballasting device and radio control, stainless steel electrical cabinet, documentation in accordance with EU standards.