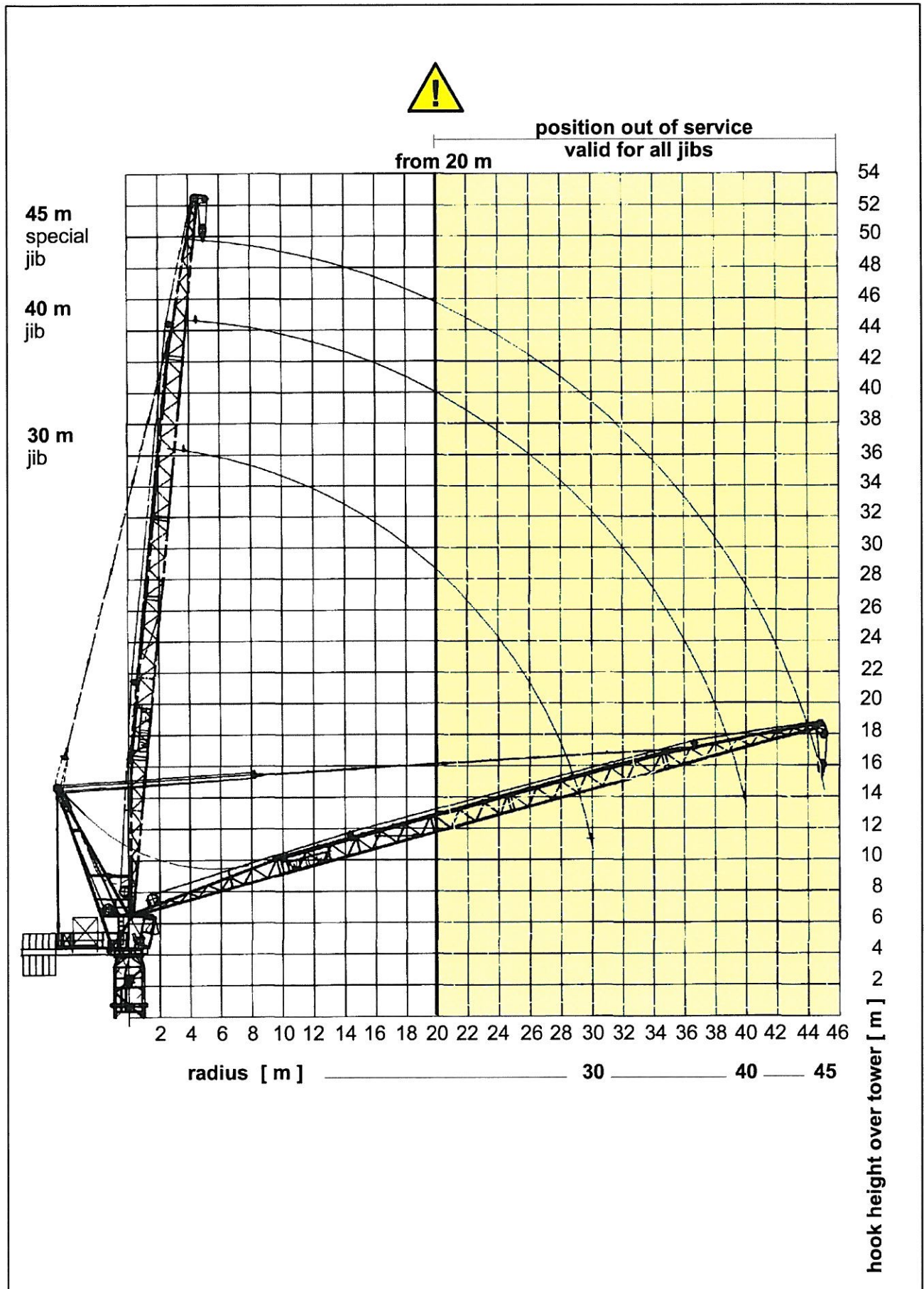


Wolff 100B


Hook positions




Wolff 100 B

series

Load capacity table


radius [m]			20	25	30	35	40	45		
length of jib [m]	45	5,0 - 19,0	 6,0	5,6	4,3	3,3	2,7	2,2	1,8	load capacity [t]
	40	4,5 - 22,0		6,0	5,0	3,8	3,0	2,3		
	30	3,5 - 24,0		6,0	5,8	4,8				


radius [m]			20	25	30	35	40	45		
length of jib [m]	45	5,0 - 32,5	 3,0	3,0	3,0	3,0	2,8	2,3	2,0	load capacity [t]
	40	4,5 - 34,5		3,0	3,0	3,0	3,0	2,5		
	30	3,5 - 30,0		3,0	3,0	3,0				

The load capacities refer to a height of tower of 40, 5 m. With greater tower heights the safe working load will be minimized by the additional weight of the hoisting cable (with 2 fall operation = 2,36 kg per meter hook path, with 1 fall operation = 1,18 kg per meter hook path).

CCplus

Load capacity table

radius [m]			20	25	30	35	40	45		
length of jib [m]	45	5,0 - 20,2	 6,0	6,0	4,6	3,7	3,0	2,4	2,0	load capacity [t]
	40	4,5 - 23,1		6,0	5,4	4,2	3,3	2,6		
	30	3,5 - 26,0		6,0	6,0	5,2				

radius [m]			20	25	30	35	40	45		
length of jib [m]	45	5,0 - 37,2	 3,0	3,0	3,0	3,0	3,0	2,7	2,2	load capacity [t]
	40	4,5 - 38,2		3,0	3,0	3,0	3,0	2,8		
	30	3,5 - 30,0		3,0	3,0	3,0				

The load capacities refer to a height of tower of 40, 5 m. With greater tower heights the safe working load will be minimized by the additional weight of the hoisting cable (with 2 fall operation = 2,36 kg per meter hook path, with 1 fall operation = 1,18 kg per meter hook path).