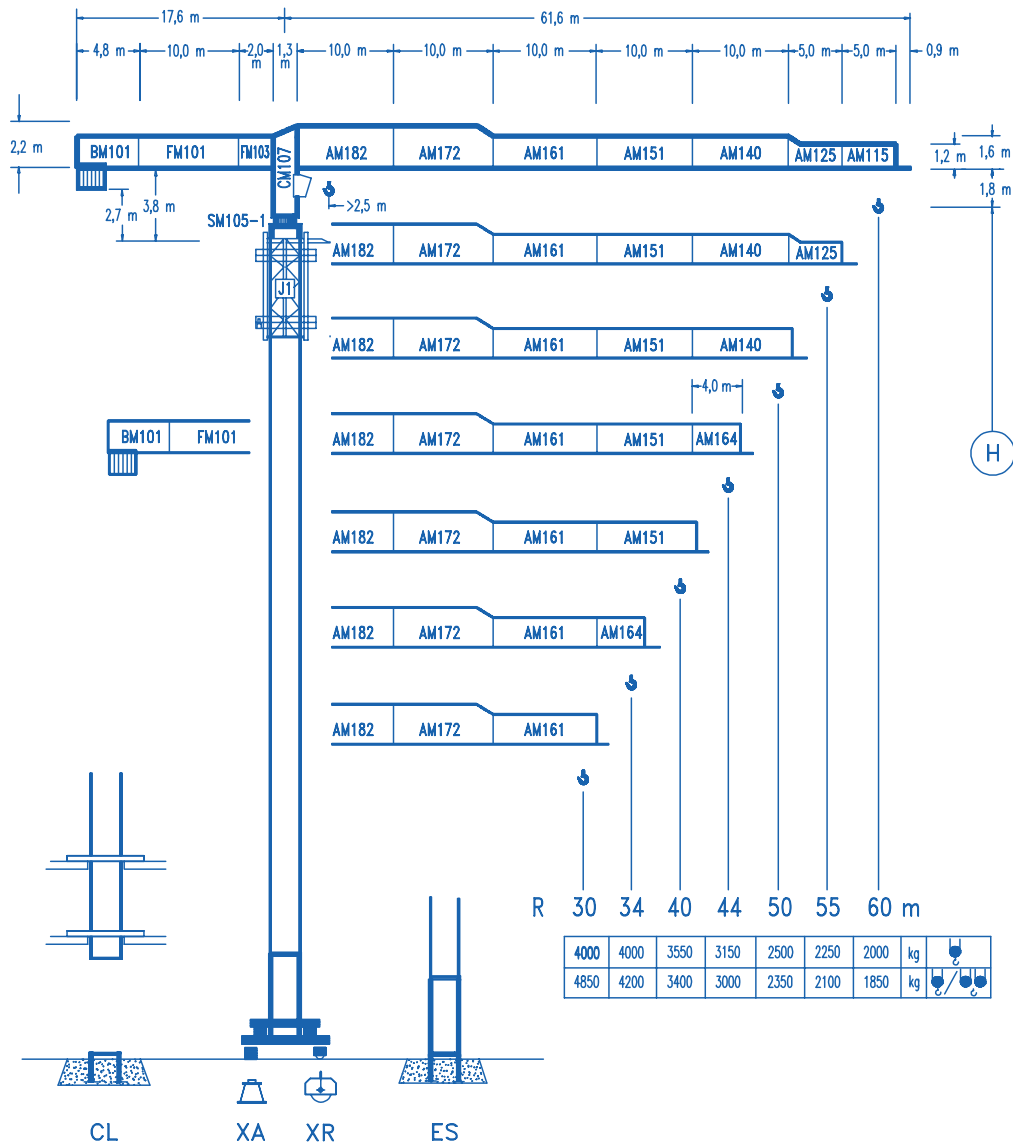


## Flat Top Tower Crane

[www.citylifting.co.uk](http://www.citylifting.co.uk)

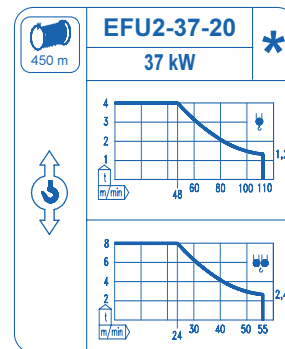
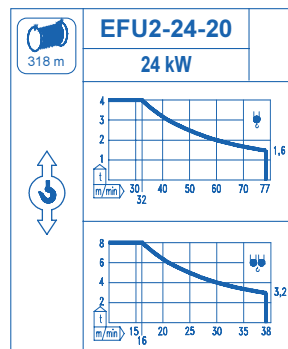
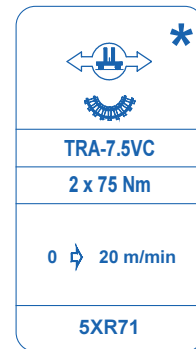
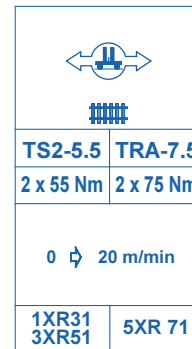
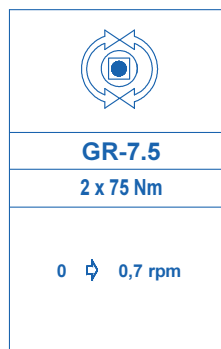
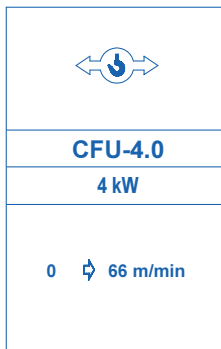
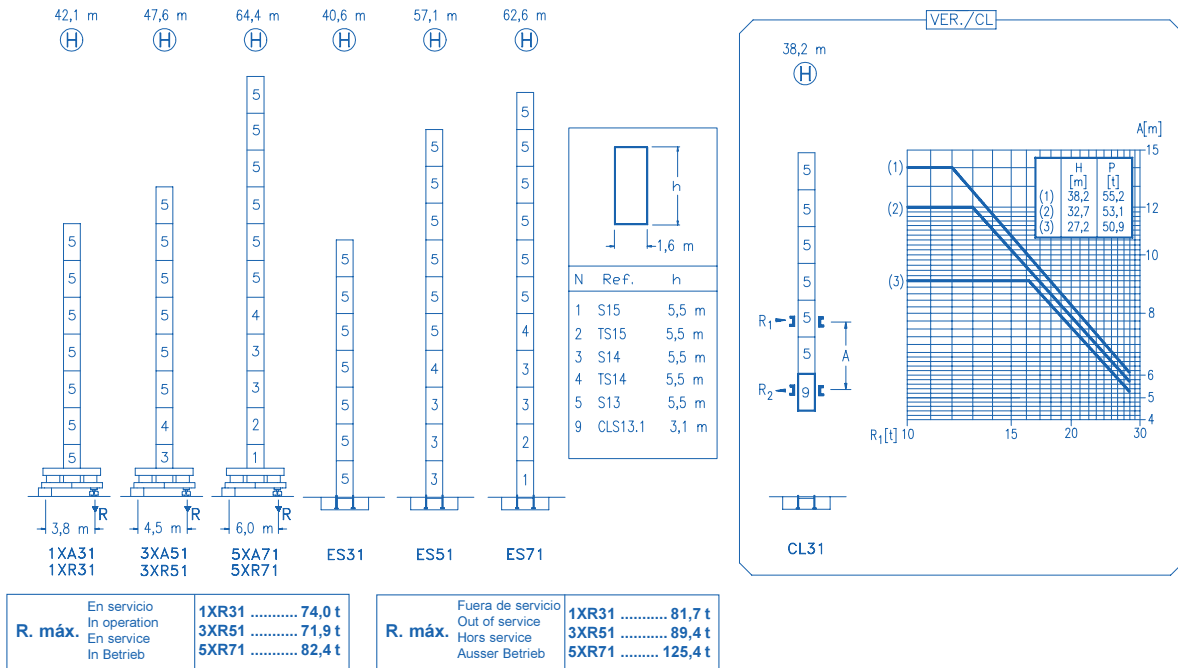


CE  
DIN 15018 H1 B3

R	R(Cmax)	Cmax	25	30	34	40	44	50	55	60	m	kg
60	33,1 m	4000	4000	4000	3885	3230	2895	2490	2225	2000		
	17,5 m	8000	5365	4350	3775	3095	2750	2345	2075	1850		
55	33,5 m	4000	4000	4000	3930	3270	2930	2520	2250			
	17,7 m	8000	5420	4395	3795	3125	2785	2375	2100			
50	33,2 m	4000	4000	4000	3900	3240	2905	2500				
	17,5 m	8000	5375	4355	3765	3100	2760	2350				
44	35,6 m	4000	4000	4000	4000	3515	3150					
	18,8 m	8000	5805	4715	4080	3365	3000					
40	36,0 m	4000	4000	4000	4000	3550						
	18,9 m	8000	5860	4760	4120	3400						
34	34,0 m	4000	4000	4000	4000							
	19,2 m	8000	5970	4850	4200							
30	30,0 m	4000	4000	4000								
	19,2 m	8000	5970	4850								

## Flat Top Tower Crane

www.citylifting.co.uk



Tensión de alimentación Operating voltage Tension de service Betriebsspannung	400 V 3 ph 50 Hz
--	------------------------

Opcional Optional En option Kaufoption	*
---	---