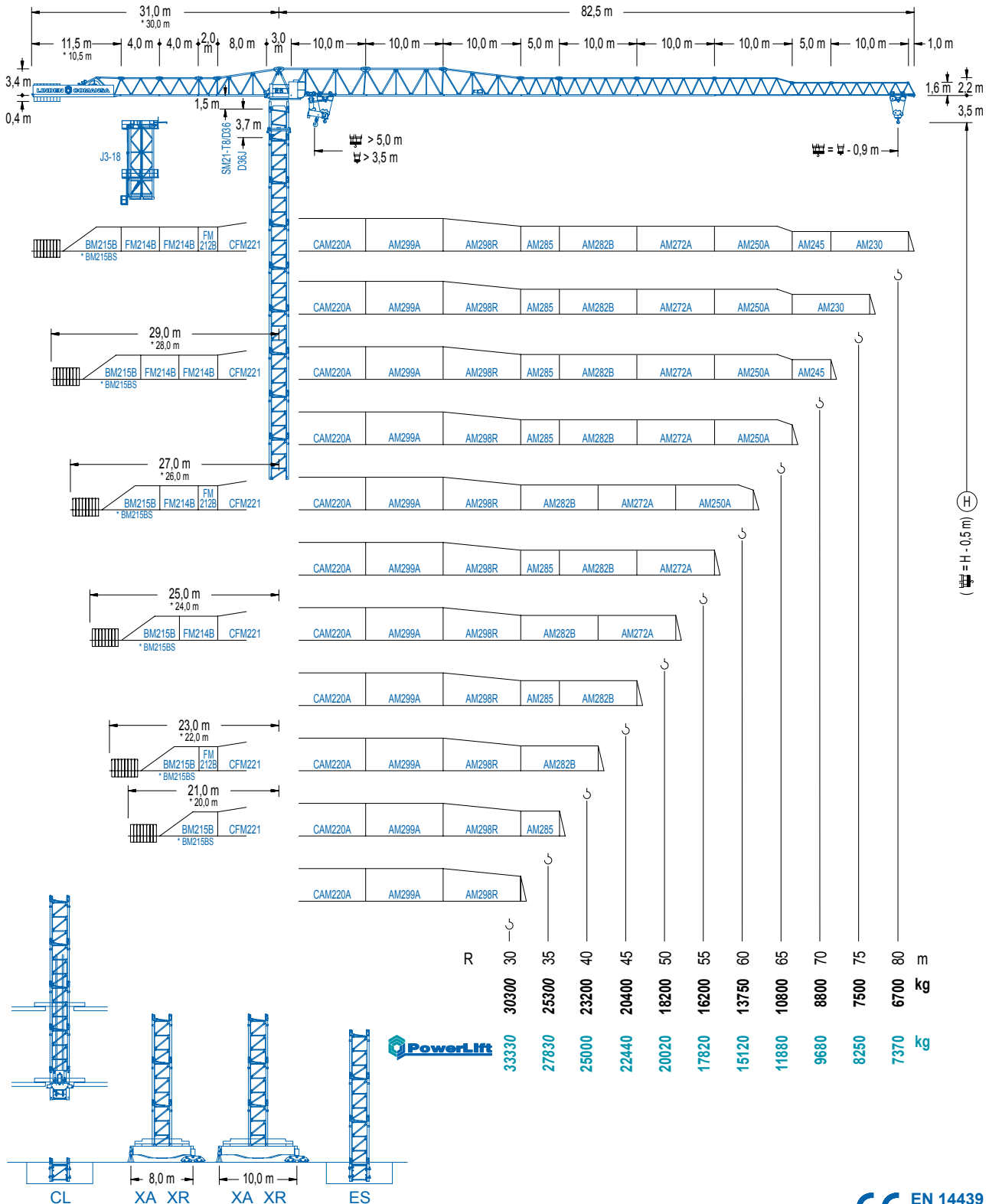


Comansa 21 LC 750

Flat Top Tower Crane

www.citylifting.co.uk



LC 2100

CE EN 14439 (C/25)

Flat Top Tower Crane

www.citylifting.co.uk

DIAGRAMA DE CARGAS

Load chart / Diagramme de charges / Lastdiagramm / Diagramma di carico / Диаграмма распределения нагрузки

| R (m) | 720 m | | | | | 720 m | | | | | | | | | | | | | | |
|-------|-------|-------|-------|-------|-------|-------|-------|-------|-------|-------|-------|-------|-------|-------|-------|------|------|------|------|----|
| 80 | 13,9 | 17 | 20 | 23 | 24,5 | 26,3 | 30 | 33 | 35 | 37 | 40 | 45 | 50 | 55 | 60 | 65 | 70 | 75 | 80,0 | m |
| | 50000 | 39020 | 32020 | 26980 | 25000 | 25000 | 21480 | 19270 | 18020 | 16900 | 15450 | 13480 | 11910 | 10640 | 9580 | 8690 | 7930 | 7270 | 6700 | kg |
| 75 | 14,1 | 17 | 20 | 23 | 25,0 | 26,9 | 30 | 33 | 35 | 37 | 40 | 45 | 50 | 55 | 60 | 65 | 70 | 75,0 | m | |
| | 50000 | 40000 | 32840 | 27680 | 25000 | 25000 | 22070 | 19800 | 18520 | 17380 | 15890 | 13860 | 12260 | 10950 | 9860 | 8950 | 8170 | 7500 | kg | |
| 70 | 14,9 | 17 | 20 | 23 | 26,4 | 28,5 | 30 | 33 | 35 | 37 | 40 | 45 | 50 | 55 | 60 | 65 | 70,0 | m | | |
| | 50000 | 42650 | 35060 | 29590 | 25000 | 25000 | 23580 | 21160 | 19800 | 18580 | 17000 | 14850 | 13140 | 11750 | 10600 | 9630 | 8800 | kg | | |
| 65 | 16,2 | 20 | 23 | 25 | 28,9 | 31,3 | 33 | 35 | 37 | 40 | 45 | 50 | 55 | 60 | 65,0 | m | | | | |
| | 50000 | 38950 | 32940 | 29790 | 25000 | 25000 | 23530 | 22020 | 20680 | 18930 | 16560 | 14670 | 13140 | 11870 | 10800 | kg | | | | |
| 60 | 18,2 | 20 | 23 | 25 | 27 | 30 | 32,5 | 35,4 | 37 | 40 | 45 | 50 | 55 | 60,0 | m | | | | | |
| | 50000 | 44730 | 37910 | 34330 | 31320 | 27580 | 25000 | 23780 | 21790 | 19090 | 16940 | 15200 | 13750 | kg | | | | | | |
| 55 | 19,1 | 23 | 25 | 27 | 30 | 33 | 34,3 | 37,4 | 40 | 45 | 50 | 55,0 | m | | | | | | | |
| | 50000 | 40280 | 36500 | 33310 | 29370 | 26180 | 25000 | 25000 | 23180 | 20320 | 18050 | 16200 | kg | | | | | | | |
| 50 | 19,2 | 23 | 25 | 27 | 30 | 33 | 34,5 | 37,7 | 40 | 45 | 50,0 | m | | | | | | | | |
| | 50000 | 40500 | 36710 | 33500 | 29540 | 26340 | 25000 | 25000 | 23380 | 20490 | 18200 | kg | | | | | | | | |
| 45 | 19,1 | 23 | 25 | 27 | 30 | 33 | 34,2 | 37,5 | 40 | 45,0 | m | | | | | | | | | |
| | 50000 | 40200 | 36430 | 33250 | 29310 | 26130 | 25000 | 25000 | 23270 | 20400 | kg | | | | | | | | | |
| 40 | 19,0 | 23 | 25 | 27 | 30 | 33 | 34,0 | 37,4 | 40,0 | m | | | | | | | | | | |
| | 49990 | 39920 | 36170 | 33010 | 29100 | 25940 | 25000 | 25000 | 23200 | kg | | | | | | | | | | |
| 35 | 19,3 | 23 | 25 | 27 | 30 | 33 | 34,1 | m | | | | | | | | | | | | |
| | 50000 | 40620 | 36820 | 33600 | 29630 | 26420 | 25300 | kg | | | | | | | | | | | | |
| 30 | 19,1 | 23 | 25 | 27 | 29,1 | m | | | | | | | | | | | | | | |
| | 50000 | 40230 | 36450 | 33270 | 30300 | kg | | | | | | | | | | | | | | |

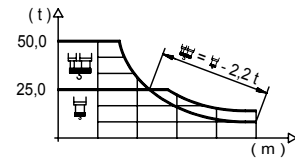
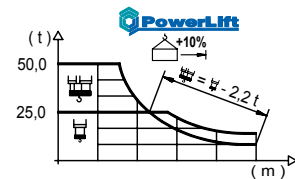


DIAGRAMA DE CARGAS POWERLIFT

Load chart PowerLift / Diagramme de charges PowerLift / Lastdiagramm PowerLift / Diagramma di carico PowerLift / Диаграмма распределения нагрузки PowerLift

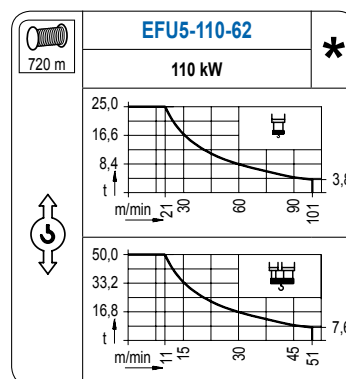
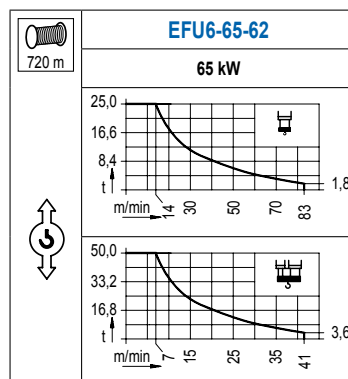
| R (m) | 720 m | | | | | 720 m | | | | | | | | | | | | | | |
|-------|-------|-------|-------|-------|-------|-------|-------|-------|-------|-------|-------|-------|-------|-------|-------|-------|------|------|------|----|
| 80 | 14,5 | 17 | 20 | 23 | 25,6 | 28,2 | 30 | 33 | 35 | 37 | 40 | 45 | 50 | 55 | 60 | 65 | 70 | 75 | 80,0 | m |
| | 50000 | 41270 | 33910 | 28600 | 25000 | 25000 | 23330 | 20940 | 19590 | 18390 | 16820 | 14690 | 13000 | 11620 | 10480 | 9520 | 8700 | 7990 | 7370 | kg |
| 75 | 14,9 | 17 | 20 | 23 | 26,3 | 28,9 | 30 | 33 | 35 | 37 | 40 | 45 | 50 | 55 | 60 | 65 | 70 | 75,0 | m | |
| | 50000 | 42480 | 34920 | 29480 | 25000 | 25000 | 24000 | 21550 | 20160 | 18930 | 17320 | 15130 | 13390 | 11980 | 10810 | 9820 | 8980 | 8250 | kg | |
| 70 | 15,7 | 17 | 20 | 23 | 27,9 | 30,7 | 33 | 35 | 37 | 40 | 45 | 50 | 55 | 60 | 65 | 70,0 | m | | | |
| | 50000 | 45530 | 37480 | 31670 | 28630 | 25000 | 25000 | 23080 | 21600 | 20280 | 18570 | 16240 | 14380 | 12880 | 11630 | 10580 | 9680 | kg | | |
| 65 | 17,2 | 20 | 23 | 25 | 27 | 30,7 | 33,8 | 35 | 37 | 40 | 45 | 50 | 55 | 60 | 65,0 | m | | | | |
| | 50000 | 41870 | 35450 | 32080 | 29240 | 25000 | 25000 | 24070 | 22610 | 20720 | 18140 | 16090 | 14420 | 13040 | 11880 | kg | | | | |
| 60 | 19,4 | 23 | 25 | 27 | 30 | 33 | 34,8 | 38,4 | 40 | 45 | 50 | 55 | 60,0 | m | | | | | | |
| | 50000 | 41000 | 37160 | 33920 | 29910 | 26670 | 25000 | 25000 | 23870 | 20930 | 18590 | 16690 | 15120 | kg | | | | | | |
| 55 | 20,5 | 23 | 25 | 27 | 30 | 33 | 35 | 36,8 | 40,6 | 45 | 50 | 55,0 | m | | | | | | | |
| | 50000 | 43710 | 39640 | 36210 | 31960 | 28520 | 26580 | 25000 | 25000 | 22310 | 19840 | 17820 | kg | | | | | | | |
| 50 | 20,6 | 23 | 25 | 27 | 30 | 33 | 35 | 37,0 | 41,0 | 45 | 50,0 | m | | | | | | | | |
| | 50000 | 44060 | 39960 | 36500 | 32220 | 28760 | 26800 | 25000 | 25000 | 22520 | 20020 | kg | | | | | | | | |
| 45 | 20,5 | 23 | 25 | 27 | 30 | 33 | 35 | 36,9 | 40,8 | 45,0 | m | | | | | | | | | |
| | 50000 | 43820 | 39740 | 36300 | 32040 | 28600 | 26640 | 25000 | 25000 | 22440 | kg | | | | | | | | | |
| 40 | 20,5 | 23 | 25 | 27 | 30 | 33 | 35 | 36,7 | 40,0 | m | | | | | | | | | | |
| | 50000 | 43610 | 39540 | 36120 | 31880 | 28460 | 26510 | 25000 | 25000 | kg | | | | | | | | | | |
| 35 | 20,8 | 23 | 25 | 27 | 30 | 33 | 34,1 | m | | | | | | | | | | | | |
| | 50000 | 44470 | 40340 | 36850 | 32540 | 29050 | 27830 | kg | | | | | | | | | | | | |
| 30 | 20,7 | 23 | 25 | 27 | 29,1 | m | | | | | | | | | | | | | | |
| | 50000 | 44130 | 40020 | 36560 | 33330 | kg | | | | | | | | | | | | | | |



LC 2100

MECANISMOS

Mechanisms / Mécanismes / Antriebe / Meccanismi / Механизмы

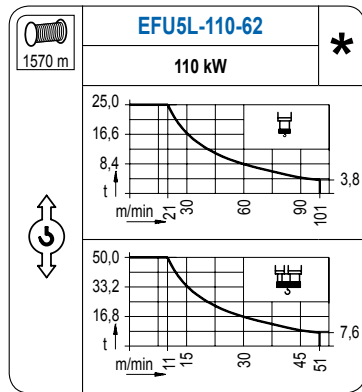


Flat Top Tower Crane

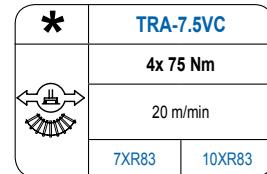
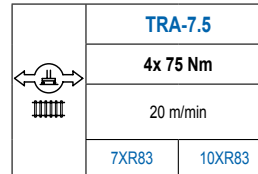
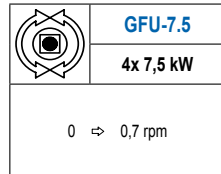
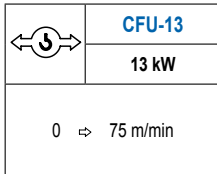
www.citylifting.co.uk

MECANISMOS

Mechanisms / Mécanismes / Antriebe / Meccanismi / Механизмы



Para mecanismos de alta capacidad de cable consultar cargas. / For mechanisms with high drum capacity, request loads. / Pour des mécanismes avec une grande capacité de câble il faut consulter. / Für Hubmechanismen mit hoher Kabelkapazität, Lastdiagramm anfragen. / Gru con tamburo ad alta capacità di avvolgimento fune, consultare il diagramma di carico. / Проконсультируйтесь о нагрузках при механизмах с большей вместимостью кабеля.



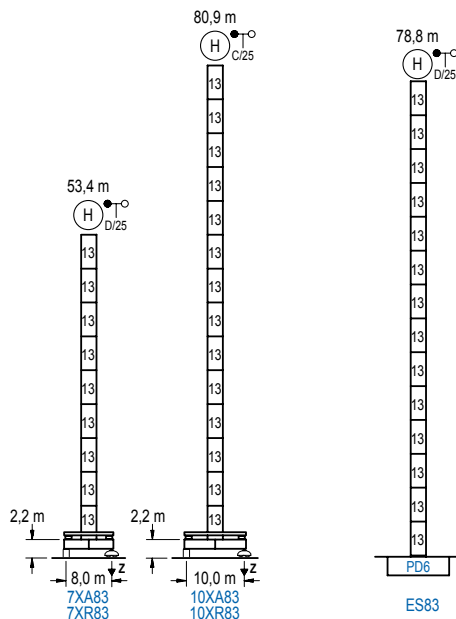
| POTENCIA / POWER / PUISSANCE / LEISTUNG / POTENZA / МОЩНОСТЬ | | | | Tensión de alimentación / Operating voltage / Tension de service / Betriebsspannung / Tensione di alimentazione / Напряжение источника питания | Generador / Generator / Générateur / Generator / Generatore / Генератор |
|---|---|--|---|--|---|
| Elevación / Hoist / Levage / Hub / Sollevamento / Тилл механизма (подъем) | Carro / Trolley / Chariot / Laufkatze / Carrello / Грузовая тележка | Giro / Slewing / Rotation / Drehbewegung / Rotazione / Поворот | Traslación / Travel / Translation / Verfahrbewegung / Traslazione / Ход | 400 V 3ph 50 Hz | 205 kVA 270 kVA 270 kVA |
| EFU6-65-62 | CFU-13 | (4x) GFU-7.5 | (4x) TRA-7.5 | | |
| EFU5-110-62 | | | | | |
| EFU5L-110-62 | | | | | |

| |
|--|
| Opcional / Optional / En option / Kaufoption / Opzionale / Опционально |
| * |

ALTURAS BAJO GANCHO

Heights under hook / Hauteurs sous crochet / Hakenhöhen / Altezza sotto gancio / Высота под крюком

∅ 2,5 m



| n° | Ref. | ∅ | h |
|----|------|-----|-----|
| 13 | D36 | 2,5 | 5,5 |

| | | |
|--------|--|---------------------------------------|
| Z máx. | En servicio / In operation / En service / In Betrieb / In servizio / При работе | 7XR83..... 179 t 10XR83..... 178 t |
| | Fuera de servicio / Out of service / Hors service / Ausser Betrieb / Fuori servizio / В стационарном состоянии | 7XR83..... 131 t 10XR83..... 187 t |

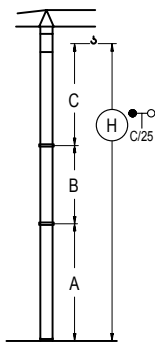
LC 2100

Flat Top Tower Crane

www.citylifting.co.uk

GRÚA ARRIOSTRADA

Braced crane / Grue à entretoisement / Abgespannter Kran / Gru ancorata / Нарращиваемый кран

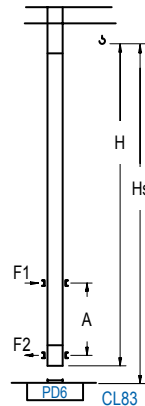


| | 7XA83 | 10XA83 |
|-------|-------|--------|
| A max | 40,7 | 68,2 |
| A min | 40,7 | 40,7 |
| B max | 49,5 | 49,5 |
| B min | 33,0 | 33,0 |
| C max | 62,2 | 62,2 |
| H max | 102,9 | 152,4 |

| | ES83 |
|-------|-------|
| A max | 66,1 |
| A min | 38,6 |
| B max | 49,5 |
| B min | 33,0 |
| C max | 62,2 |
| H max | 128,3 |

GRÚA TREPADORA

Internal climbing crane / Grue avec cage de télescopage intérieure / Kran mit klettern im Gebäude / Gru in rampante in cavedio / Кран с самоподъемом



| H (m) | Hs < 400 m | |
|---|------------|-----------|
| | A max (m) | A min (m) |
| 60,5 m 6x D36 + 4x D36A + CLD36 | 21,9 | 9,0 |
| 55,0 m 5x D36 + 4x D36A + CLD36 | 19,1 | 9,0 |
| 49,5 m 4x D36 + 4x D36A + CLD36 | 16,4 | 9,0 |

| n° | Ref. | ∅ | h |
|----|-------|-----|-----|
| 13 | D36 | 2,5 | 5,5 |
| 22 | D36A | 2,5 | 5,5 |
| 19 | CLD36 | 2,5 | 3,8 |

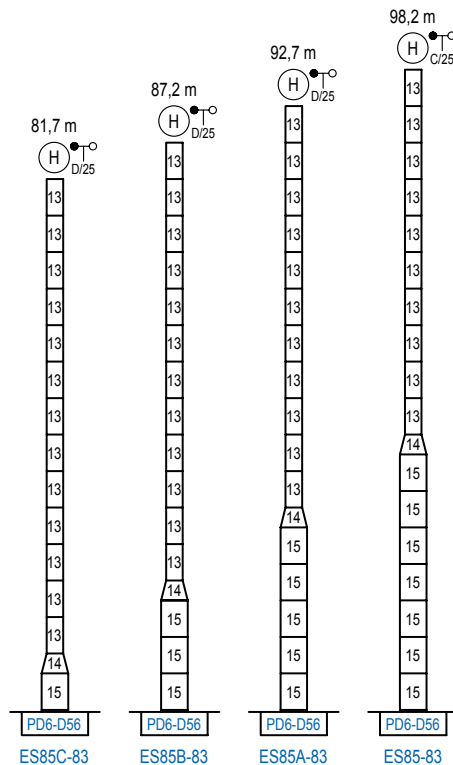
Otras zonas de viento, alturas superiores, arriostramientos o trepado interno consultar / Other wind zones, additional hook heights, tie frames or internal climbing on request / Autres zones de vent, des hauteurs supplémentaires, entretoisements ou grues avec cage de télescopage intérieure, sur demande / Andere Windzonen, weitere Hakenhöhen, Abspannungen zum Gebäude oder Klettern im Gebäude auf Anfrage / Per zone con velocità del vento particolari, altezze superiori, ancoraggi o rampante in cavedio, consultare il fabbricante / При других ветреных зонах, при большой высоте, привязках к зданию или наращивании крана внутри здания проконсультируйтесь с нами

ALTURAS ESPECIALES

Special heights / Spéciaux hauteurs / Extra Höhen / Conformazioni raccordate per altezze speciali / Для специальной высоты

∅ 4,0 m

LC 2100



| n° | Ref. | ∅ | h |
|----|---------|-----|-----|
| 13 | D36 | 2,5 | 5,5 |
| 14 | TD56D36 | 4,0 | 3,0 |
| 15 | D56 | 4,0 | 5,5 |