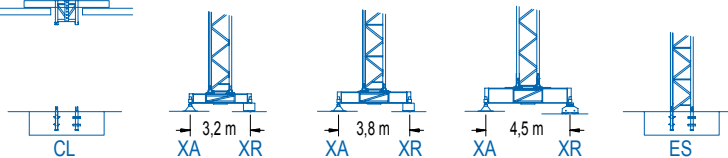
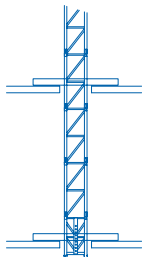
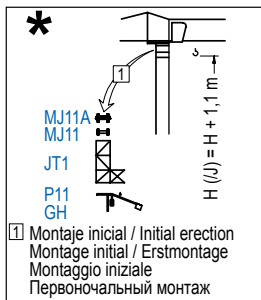
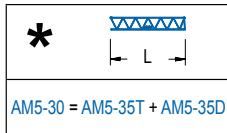
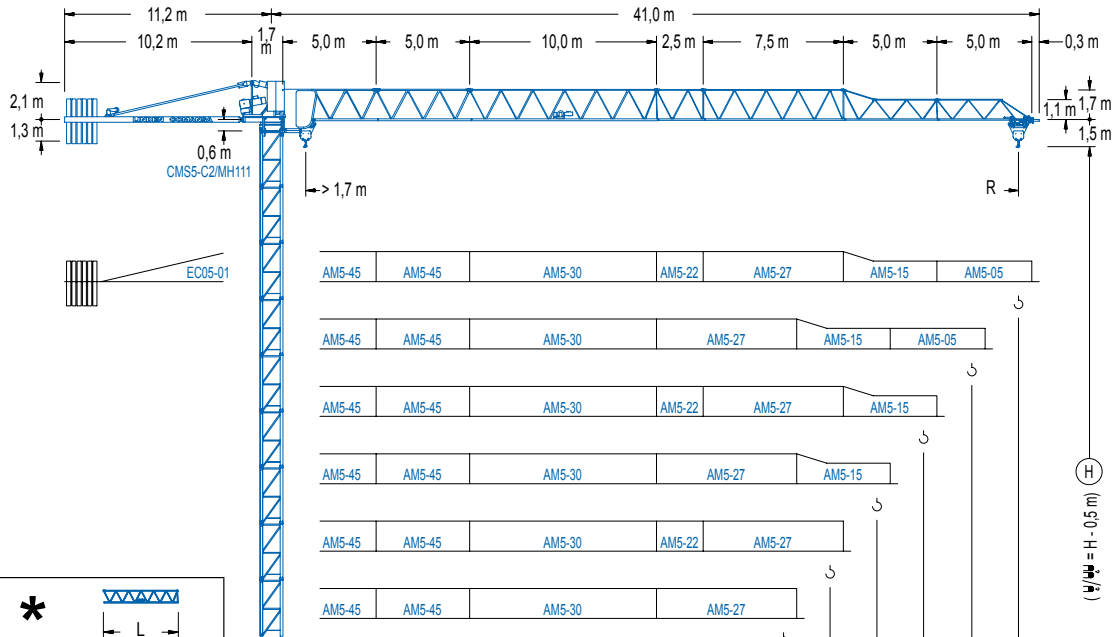


## Flat Top Tower Crane

www.citylifting.co.uk

LC 500



AM5-45	AM5-45	AM5-30	AM5-22	AM5-27	AM5-15	AM5-05
AM5-45	AM5-45	AM5-30	AM5-27	AM5-15	AM5-05	
AM5-45	AM5-45	AM5-30	AM5-22	AM5-27	AM5-15	
AM5-45	AM5-45	AM5-30	AM5-27	AM5-15		
AM5-45	AM5-45	AM5-30	AM5-22	AM5-27		
AM5-45	AM5-45	AM5-30	AM5-27			
AM5-45	AM5-45	AM5-30	AM5-15			
AM5-45	AM5-45	AM5-30	AM5-22			
AM5-45	AM5-45	AM5-30				

R	2000	2000	2000	2000	1920	1760	1660	1500	1430	1210	1100	1000	m
20,0	2000	2000	2000	2000	1920	1760	1660	1500	1430	1210	1100	1000	
22,5	2000	2000	2000	2000	1920	1760	1660	1500	1430	1210	1100	1000	kg
25,0	2000	2000	2000	2000	1920	1760	1660	1500	1430	1210	1100	1000	kg
27,5	2000	2000	2000	2000	1920	1760	1660	1500	1430	1210	1100	1000	kg
30,0	2000	2000	2000	2000	1920	1760	1660	1500	1430	1210	1100	1000	kg
32,5	2000	2000	2000	2000	1920	1760	1660	1500	1430	1210	1100	1000	kg
35,0	2000	2000	2000	2000	1920	1760	1660	1500	1430	1210	1100	1000	kg
37,5	2000	2000	2000	2000	1920	1760	1660	1500	1430	1210	1100	1000	kg
40,0	2000	2000	2000	2000	1920	1760	1660	1500	1430	1210	1100	1000	kg

## Flat Top Tower Crane

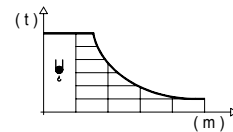
www.citylifting.co.uk

LC 500

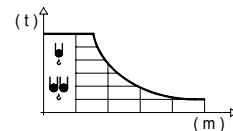
### DIAGRAMA DE CARGAS

Load chart / Diagramme de charges / Lastdiagramm / Diagramma di carico / Диаграмма распределения нагрузки

R (m)	ψ	RC <sup>max</sup> (m)	10,0	12,5	15,0	17,5	20,0	22,5	25,0	27,5	30,0	32,5	35,0	37,5	40,0	↔(m) ↓(kg)
40,0		22,3					2000	1980	1750	1570	1420	1290	1180	1080	1000	
37,5		22,6						2000	1780	1590	1440	1310	1200	1100		
35,0		24,2						2000	1930	1730	1560	1420	1300			
32,5		25,3							2000	1820	1650	1500				
30,0		24,7						2000	1970	1770	1600					
27,5		24,5						2000	1950	1750						
25,0		25,0							2000							
22,5		22,5						2000								
20,0		20,0					2000									



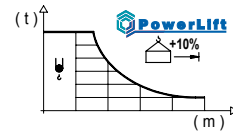
R (m)	ψ/ψ	RC <sup>max</sup> (m)	10,0	12,5	15,0	17,5	20,0	22,5	25,0	27,5	30,0	32,5	35,0	37,5	40,0	↔(m) ↓(kg)
40,0		12,0	4000	3820	3090	2580	2200	1910	1670	1490	1330	1200	1080	990	900	
37,5		12,1	4000	3870	3130	2610	2230	1930	1700	1510	1350	1210	1100	1000		
35,0		12,9	4000	3370	2820	2410	2090	1840	1640	1470	1320	1200				
32,5		13,5	4000	3550	2970	2540	2200	1940	1730	1550	1400					
30,0		13,2	4000	3450	2880	2460	2140	1880	1670	1500						
27,5		13,0	4000	3400	2840	2430	2110	1860	1650							
25,0		13,3	4000	3480	2910	2480	2160	1900								
22,5		13,2	4000	3460	2900	2470	2150									
20,0		13,4	4000	3500	2920	2500										



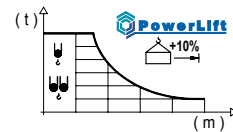
### DIAGRAMA DE CARGAS POWERLIFT

Load chart PowerLift / Diagramme de charges PowerLift / Lastdiagramm PowerLift / Diagramma di carico PowerLift / Диаграмма распределения нагрузки PowerLift

R (m)	ψ	RC <sup>max</sup> (m)	10,0	12,5	15,0	17,5	20,0	22,5	25,0	27,5	30,0	32,5	35,0	37,5	40,0	↔(m) ↓(kg)
40,0		24,1						2000	1920	1720	1550	1410	1290	1190	1100	
37,5		24,4						2000	1950	1740	1580	1440	1310	1210		
35,0		26,2							2000	1890	1710	1560	1430			
32,5		27,5								2000	1810	1650				
30,0		26,8							2000	1940	1760					
27,5		26,5							2000	1920						
25,0		25,0							2000							
22,5		22,5						2000								
20,0		20,0					2000									



R (m)	ψ/ψ	RC <sup>max</sup> (m)	10,0	12,5	15,0	17,5	20,0	22,5	25,0	27,5	30,0	32,5	35,0	37,5	40,0	↔(m) ↓(kg)
40,0		12,8	4000	3340	2790	2380	2070	1820	1620	1450	1310	1190	1080	990		
37,5		13,0	4000	3390	2830	2420	2100	1850	1640	1470	1330	1210	1100			
35,0		13,9	4000	3660	3060	2620	2280	2010	1790	1610	1450	1320				
32,5		14,5	4000	3860	3230	2770	2410	2120	1890	1700	1540					
30,0		14,2	4000	3750	3140	2690	2340	2060	1840	1650						
27,5		14,1	4000	3700	3100	2650	2310	2030	1810							
25,0		14,3	4000	3800	3180	2720	2370	2090								
22,5		14,3	4000	3780	3170	2710	2360									
20,0		14,5	4000	3840	3210	2750										



### MECANISMOS

Mechanisms / Mécanismes / Antriebe / Meccanismi / Механизмы

**ES3-13-10**  
225 m | 13,2 kW

	I	II	III
m/min	7,5	30	60
kg	2000	2000	1100

	I	II	III
m/min	3,7	15	30
kg	4000	4000	2200

**ES3-18-10**  
250 m | 18 kW

	I	II	III
m/min	10	38	76
kg	2000	2000	1100

	I	II	III
m/min	5	19	38
kg	4000	4000	2200

**EFU2-11-10**  
225 m | 11 kW

t	m/min	kg
2	30	2000
1,5	40	1500
1	60	1000
0,8	74	800

t	m/min	kg
4	15	4000
3	20	3000
2	30	2000
1,6	37	1600

**EFU2-18-10**  
250 m | 18 kW

t	m/min	kg
2	54	2000
1,5	60	1500
1	70	1000
0,8	82	800





t	m/min	kg
4	27	4000
3	30	3000
2	35	2000
1,6	46	1600

## Flat Top Tower Crane

www.citylifting.co.uk

### MECANISMOS

Mechanisms / Mécanismes / Antriebe / Meccanismi / Механизмы

	<b>CS2-1.9</b> 1,9 kW		<b>CFU-2.2</b> 2,2 kW *		<b>GR-6.5</b> 65 Nm		<b>TS2-3.0</b> 2 x 30 Nm	<b>TS2-4.5</b> 2 x 45 Nm	<b>TS2-5.5</b> 2 x 55 Nm
16 m/min 48 m/min		0 ⇔ 80 m/min		0 ⇔ 0,8 rpm		0 ⇔ 20 m/min			
						<b>XR0H</b>	<b>XR2H</b>	<b>XR3H</b>	

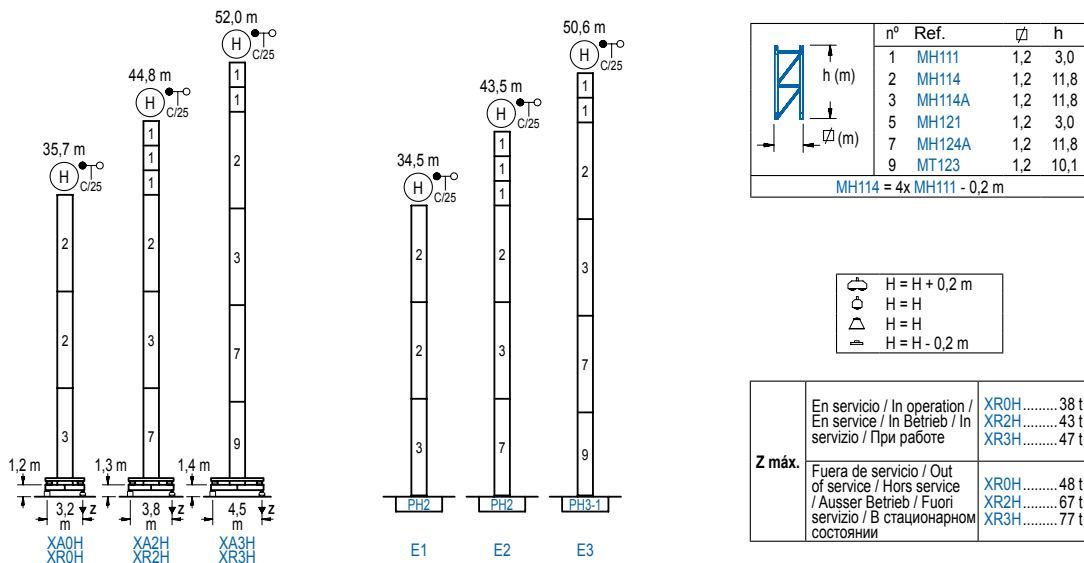
POTENCIA / POWER / PUISSANCE / LEISTUNG / ПОТЕНЦИАЛЬНОСТЬ				Tensión de alimentación / Operating voltage / Tension de service / Betriebsspannung / Tensione di alimentazione / Напряжение источника питания	Generador / Generator / Générateur / Generator / Generatore / Генератор	Opcional / Optional / En option / Kaufoption / Opzionale / Опционально
Elevación / Hoist / Levage / Hub / Sollevamento / Тип механизма (подъем)	Carro / Trolley / Chariot / Laufkatze / Carrello / Грузовая тележка	Giro / Slewing / Rotation / Drehbewegung / Rotazione / Поворот	Traslación / Travel / Translation / Verfahrbewegung / Traslazione / Ход	400 V 3ph 50 Hz	90 kVA 107 kVA 48 kVA 60 kVA	*
ES3-13-10	CS2-1.9	GR-6.5	(2x) TS2-3.0			
ES3-18-10	CFU-2.2		(2x) TS2-4.5			
EFU2-11-10		(2x) TS2-5.5				
EFU2-18-10						

LC 500

### ALTURAS BAJO GANCHO

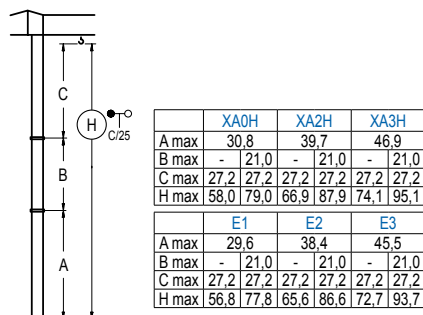
Heights under hook / Hauteurs sous crochet / Hakenhöhen / Altezza sotto gancio / Высота под крюком

12 m



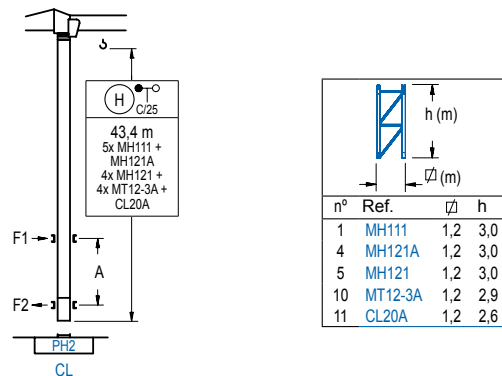
### GRÚA ARRIOSTRADA

Braced crane / Grue à entretôisement / Abgespannter Kran / Gru ancorata / Нарастиваемый кран



### GRÚA TREPADORA

Internal climbing crane / Grue avec cage de télescopage intérieure / Kran mit Klettern im Gebäude / Gru in rampante in cavedio / Кран с самоподъемом



## Flat Top Tower Crane

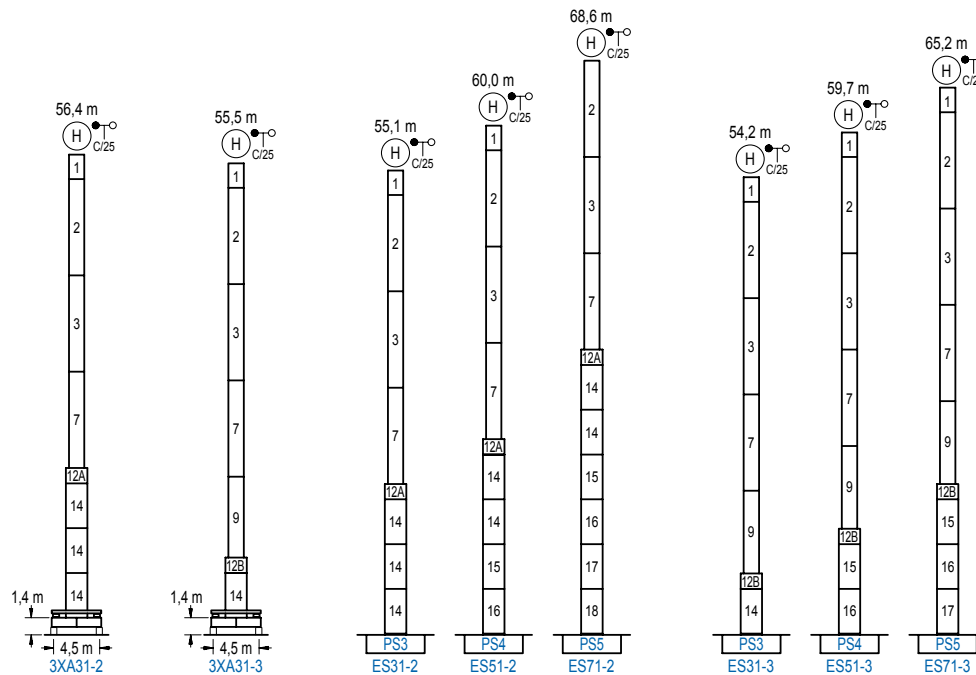
www.citylifting.co.uk

### ALTURAS ESPECIALES

Special heights / Spéciaux hauteurs / Extra Höhen / Conformazioni raccordate per altezze speciali / Для специальной высоты

∅ 1,6 m

LC 500



n°	Ref.	∅	h	n°	Ref.	∅	h	n°	Ref.	∅	h
1	MH111	1,2	3,0	12A	TMS13/PMH12	1,6	1,0	14	S13	1,6	5,5
2	MH114	1,2	11,8	12B	TMS13/PMH13	1,6	1,0	15	TS14	1,6	5,5
3	MH114A	1,2	11,8					16	S14	1,6	5,5
7	MH124A	1,2	11,8					17	TS15	1,6	5,5
9	MT123	1,2	10,1					18	S15	1,6	5,5
MH114 = 4x MH111 - 0.2 m											

Otras zonas de viento o alturas superiores consultar / Other wind zones or additional hook heights on request / Autres zones de vent ou des hauteurs supplémentaires sur demande / Andere Windzonen oder weitere Hakenhöhen auf Anfrage / Per zone con velocità del vento particolari o altezze superiori consultare il fabbricante / При других ветренных зонах о при большой высоте проконсультируйтесь с нами