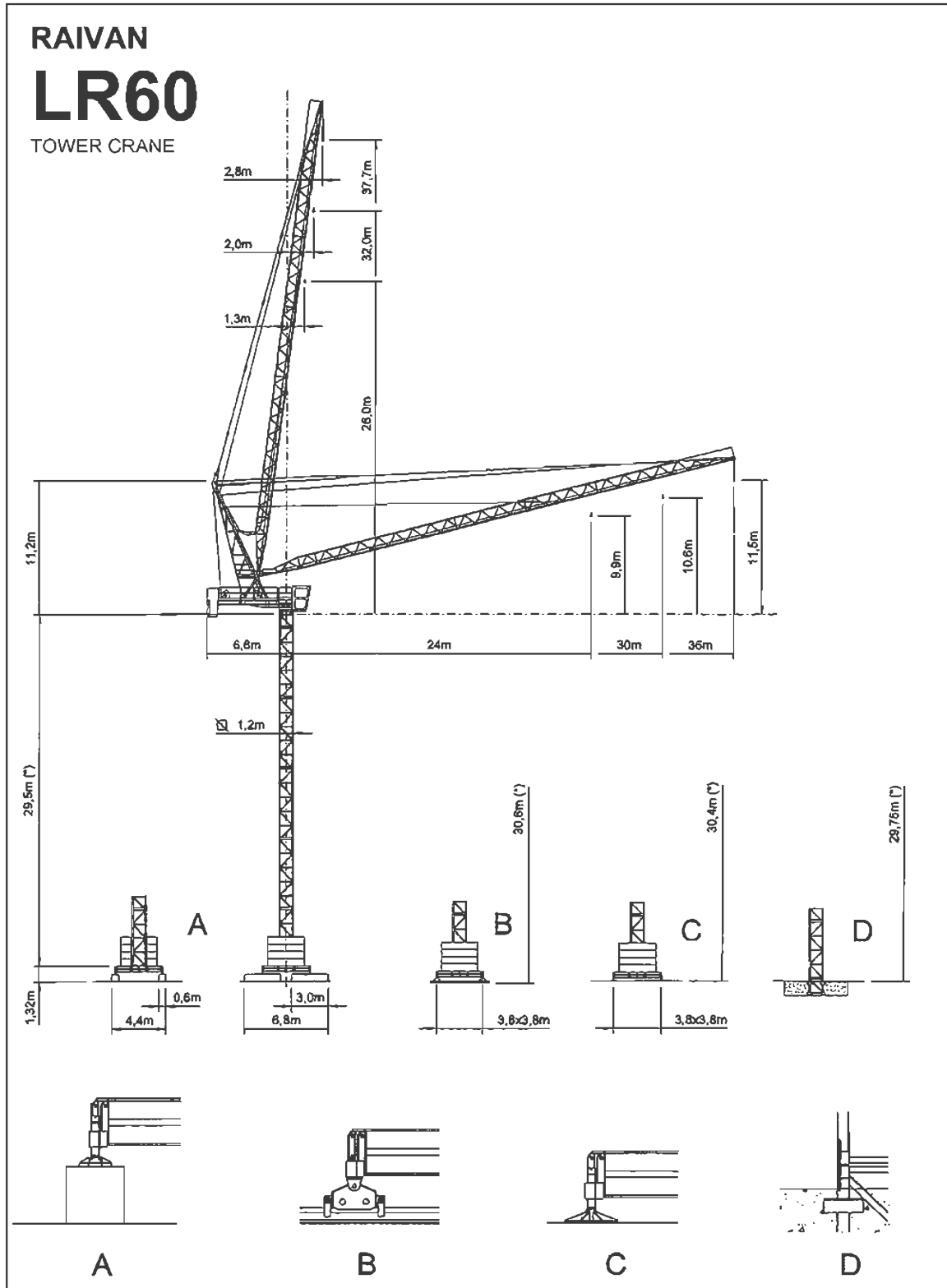


Tower Crane

www.citylifting.co.uk

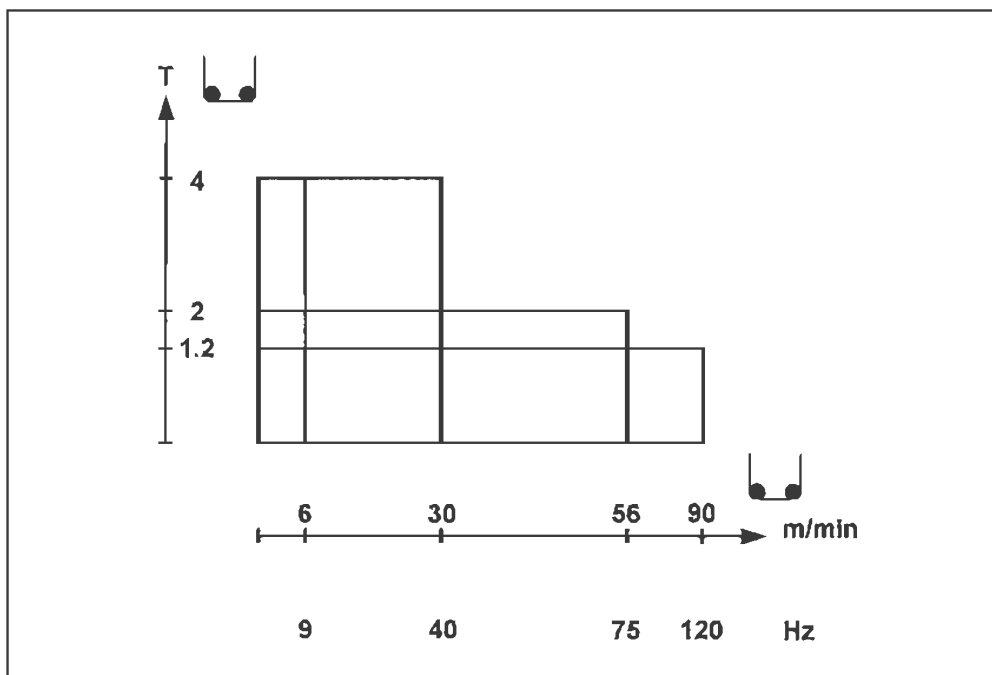


Tower Crane

www.citylifting.co.uk

LOAD-RADIUS CHARACTERISTICS (4000Kg)				
JIB	m	36	30	24
RADIUS (m)	17	4000		
	18	3767	4000	4000
	19	3521	3746	3919
	20	3297	3517	3691
	21	3092	3307	3482
	22	2904	3114	3290
	23	2731	2936	3113
	24	2571	2772	2950
	25	2422	2620	
	26	2284	2478	
	27	2156	2347	
	28	2036	2224	
	29	1923	2108	
	30	1818	2000	
	31	1719		
	32	1625		
	33	1537		
	34	1454		
	35	1375		
	36	1300		

HOISTING WINCH HP.40



SLEWING
SPEED:
0 - 0.76 r.p.m
POWER:
3.2 Kw



LUFFING
ANGLE:
14.5° - 85°
SPEED:
1.73 m/min
POWER:
18.4 Kw



RAIL
SPEED:
14 m/min
POWER:
2 x 2.9 Kw