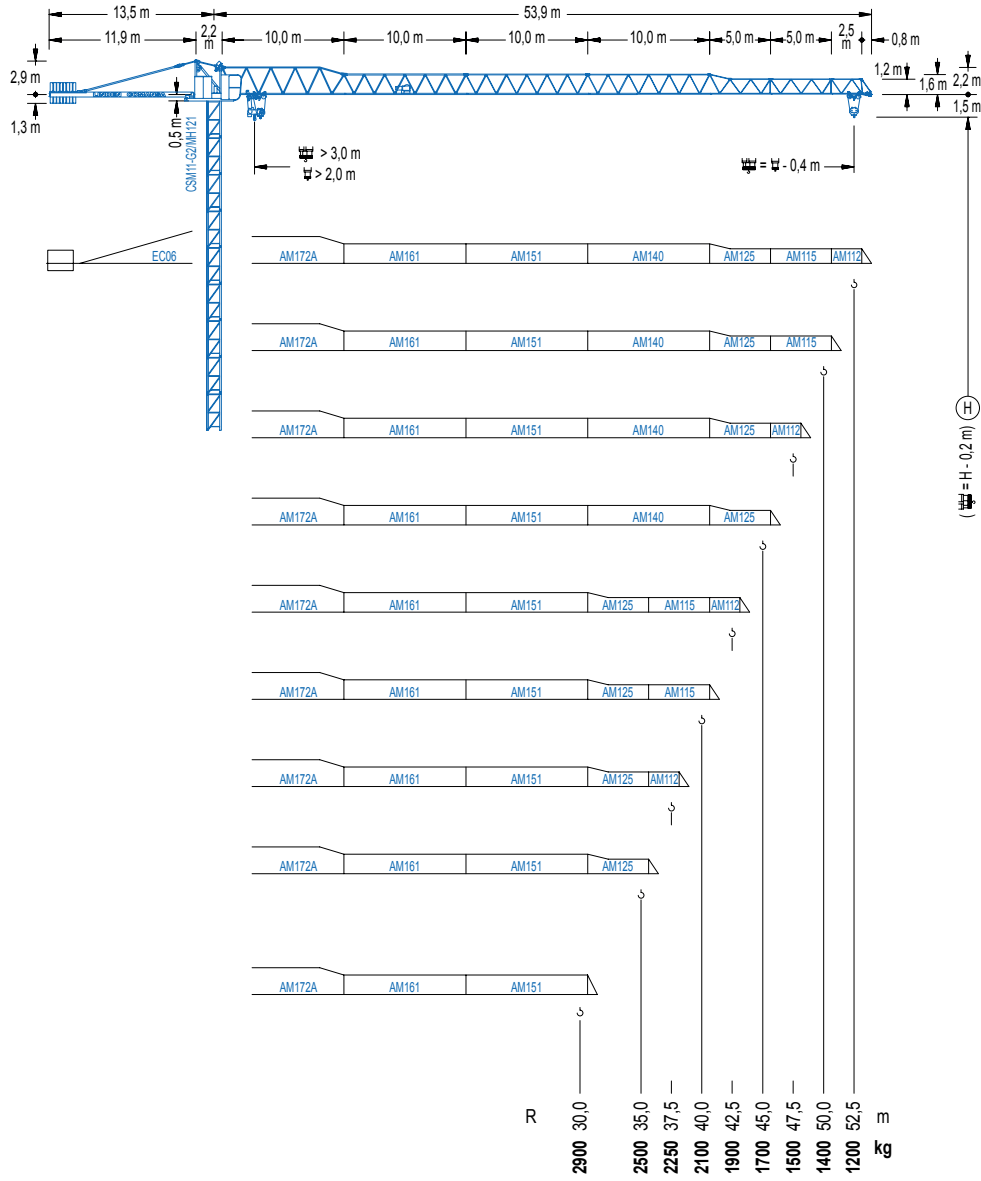


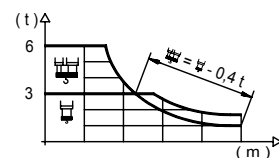
COMANSA 11 LC 90

FLAT TOP TOWER CRANE

Useful cab or pedestrian operated crane with reasonable lifting duties and a range of jib lengths from 20 metres up to 52.5 metres in 2.5 metre increments. The crane can be mounted on 3.2 to 6 metre ballasted base crosses or on fixing angles. The 11 LC 90 can be erected to great height with larger tower sections.

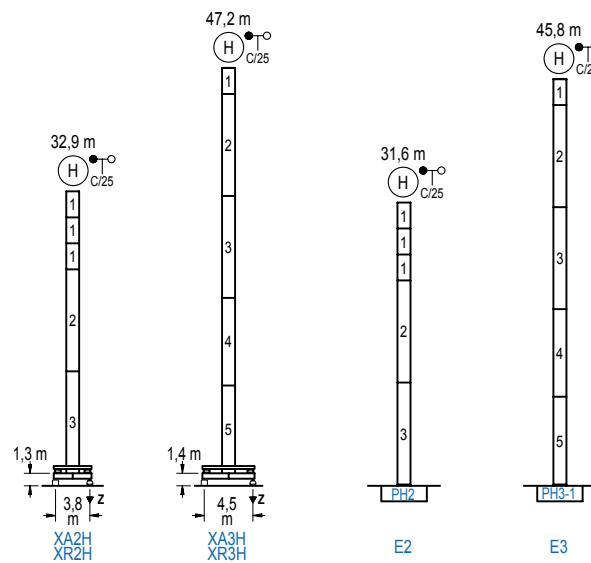
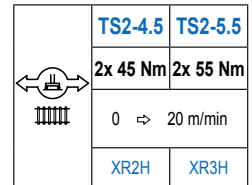
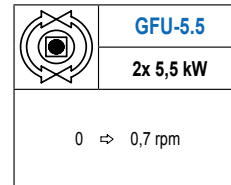
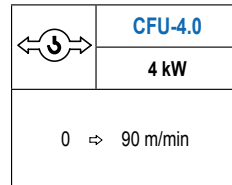
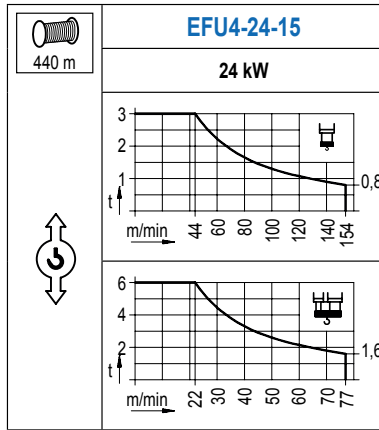


R (m)	H						H												
52,5	12,8 6000	14 5390	16 4580	18 3960	20 3460	22,4 3000	24,9 3000	28 2610	30 2410	32 2230	35 2000	37,5 1840	40 1700	42,5 1580	45 1470	47,5 1370	50 1280	52,5 1200	m kg
50,0	13,7 6000	14 5820	16 4960	18 4290	20 3760	23,9 3000	26,6 3000	28 2830	30 2610	32 2420	35 2180	37,5 2000	40 1850	42,5 1720	45 1600	47,5 1490	50,0 1400	m kg	
47,5	13,7 6000	14 5830	16 4960	18 4300	20 3770	23,9 3000	26,7 3000	28 2840	30 2620	32 2430	35 2180	37,5 2010	40 1860	42,5 1720	45 1610	47,5 1500	m kg		
45,0	14,3 6000	16 5520	18 4530	20 3980	22 3530	25,0 3000	27,9 3000	30 2760	32 2560	35 2300	37,5 2120	40 1960	42,5 1820	45,0 1700	m kg				
42,5	14,7 6000	16 5420	18 4700	20 4130	22 3670	25,8 3000	28,9 3000	30 2870	32 2660	35 2400	37,5 2210	40 2040	42,5 1900	m kg					
40,0	15,0 6000	16 5550	18 4820	20 4240	22 3760	25 3200	26,3 3000	29,5 3000	32 2730	35 2460	37,5 2270	40,0 2100	m kg						
37,5	14,9 6000	16 5500	18 4770	20 4200	22 3730	25 3170	26,1 3000	29,3 3000	32 2710	35 2440	37,5 2250	m kg							
35,0	15,2 6000	16 5620	18 4880	20 4290	22 3810	25 3240	26,6 3000	29,9 3000	32 2780	35,0 2500	m kg								
30,0	14,7 6000	16 5430	18 4710	20 4140	22 3670	25,8 3000	29,1 3000	30,0 2900	m kg										



COMANSA 11 LC 90

FLAT TOP TOWER CRANE

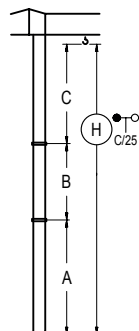


nº	Ref.	∅	h
1	MH121	1,2	3,0
2	MH124-1	1,2	11,8
3	MH124A	1,2	11,8
4	MT123A	1,2	10,1
5	MT123	1,2	10,1

MH124-1 = 4x MH121 - 0,2 m

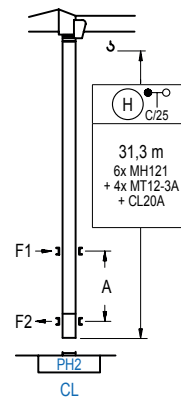
- H = H + 0,2 m
- H = H
- H = H
- H = H - 0,2 m

Z máx.	In service	XR2H 43 t XR3H 51 t
	Out of service	XR2H 42 t XR3H 75 t



	XA2H	XA3H
A max	27,9	42,4
B max	- 18,0	- 18,0
C max	24,1 24,1	24,1 24,1
H max	51,9 69,9	66,5 84,5

	E2	E3
A max	26,6	41,0
B max	- 18,0	- 18,0
C max	24,1 24,1	24,1 24,1
H max	50,7 68,7	65,1 83,1



nº	Ref.	∅	h
1	MH121	1,2	3,0
19	MT12-3A	1,2	2,9
20	CL20A	1,2	2,6