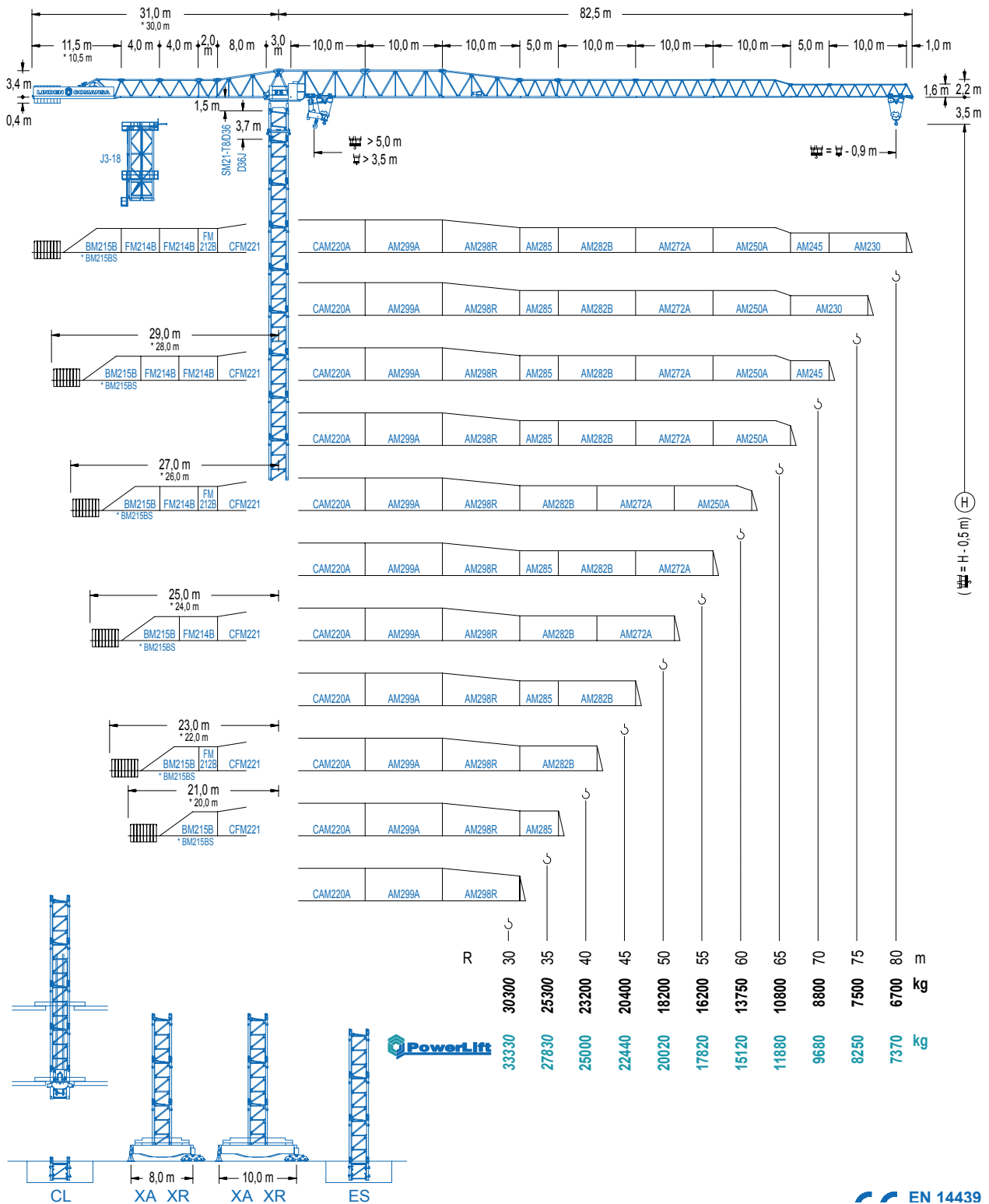


Heavy duty large tower crane with 50 tonne capacity. Very strong, fast and easy to drive.

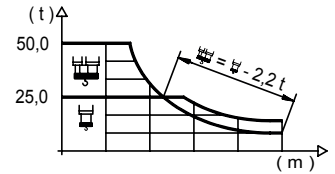


# COMANSA 21 LC 750

## FLAT TOP TOWER CRANE

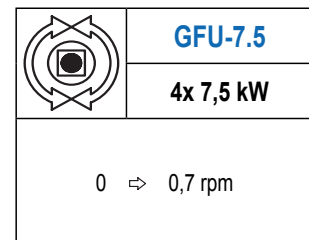
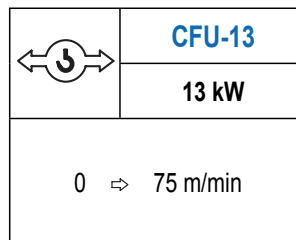
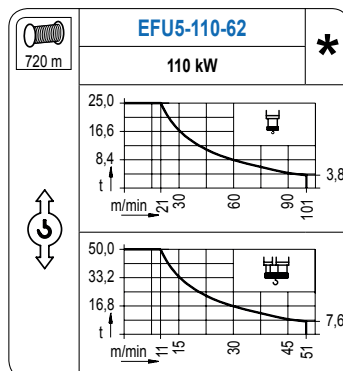
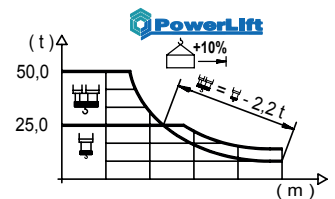
### LOAD CHART

R (m)	⚙️					🏗️														
80	13,9 50000	17 39020	20 32020	23 26980	24,5 25000	26,3 25000	30 21480	33 19270	35 18020	37 16900	40 15450	45 13480	50 11910	55 10640	60 9580	65 8690	70 7930	75 7270	80,0 6700	m kg
75	14,1 50000	17 40000	20 32840	23 27680	25,0 25000	26,9 25000	30 22070	33 19800	35 18520	37 17380	40 15890	45 13860	50 12260	55 10950	60 9860	65 8950	70 8170	75,0 7500	m kg	
70	14,9 50000	17 42650	20 35060	23 29590	25,0 25000	28,5 25000	30 23580	33 21160	35 19800	37 18580	40 17000	45 14850	50 13140	55 11750	60 10600	65 9630	70,0 8800	m kg		
65	16,2 50000	20 38950	23 32940	25 29790	25,0 25000	31,3 25000	33 23530	35 22020	37 20680	40 18930	45 16560	50 14670	55 13140	60 11870	65,0 10800	m kg				
60	18,2 50000	20 44730	23 37910	25 34330	27 31320	30 27580	32,5 25000	35,4 25000	37 23780	40 21790	45 19090	50 16940	55 15200	60,0 13750	m kg					
55	19,1 50000	23 40280	25 36500	27 33310	30 29370	33 26180	34,3 25000	37,4 25000	40 23180	45 20320	50 18050	55,0 16200	m kg							
50	19,2 50000	23 40500	25 36710	27 33500	30 29540	33 26340	34,5 25000	37,7 25000	40 23380	45 20490	50,0 18200	m kg								
45	19,1 50000	23 40200	25 36430	27 33250	30 29310	33 26130	34,2 25000	37,5 25000	40 23270	45,0 20400	m kg									
40	19,0 49990	23 39920	25 36170	27 33010	30 29100	33 25940	34,0 25000	37,4 25000	40,0 23200	m kg										
35	19,3 50000	23 40620	25 36820	27 33600	30 29630	33 26420	34,1 25300	m kg												
30	19,1 50000	23 40230	25 36450	27 33270	29,1 30300	m kg														



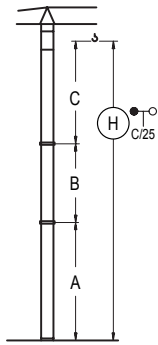
### LOAD CHART WITH POWER LIFT

R (m)	⚙️					🏗️														
80	14,5 50000	17 41270	20 33910	23 28600	25,6 25000	28,2 25000	30 23330	33 20940	35 19590	37 18390	40 16820	45 14690	50 13000	55 11620	60 10480	65 9520	70 8700	75 7990	80,0 7370	m kg
75	14,9 50000	17 42480	20 34920	23 29480	26,3 25000	28,9 25000	30 24000	33 21550	35 20160	37 18930	40 17320	45 15130	50 13390	55 11980	60 10810	65 9820	70 8980	75,0 8250	m kg	
70	15,7 50000	17 45530	20 37480	23 31670	26,3 25000	27,9 25000	30,7 25000	33 23080	35 21600	37 20280	40 18570	45 16240	50 14380	55 12880	60 11630	65 10580	70,0 9680	m kg		
65	17,2 50000	20 41870	23 35450	25 32080	27 29240	30,7 25000	33,8 25000	35 24070	37 22610	40 20720	45 18140	50 16090	55 14420	60 13040	65,0 11880	m kg				
60	19,4 50000	23 41000	25 37160	27 33920	30 29910	33 26670	34,8 25000	38,4 25000	40 23870	45 20930	50 18590	55 16690	60,0 15120	m kg						
55	20,5 50000	23 43710	25 39640	27 36210	30 31960	33 28520	35 26580	36,8 25000	40,6 25000	45 22310	50 19840	55,0 17820	m kg							
50	20,6 50000	23 44060	25 39960	27 36500	30 32220	33 28760	35 26800	37,0 25000	41,0 25000	45 22520	50,0 20020	m kg								
45	20,5 50000	23 43820	25 39740	27 36300	30 32040	33 28600	35 26640	36,9 25000	40,8 25000	45,0 22440	m kg									
40	20,5 50000	23 43610	25 39540	27 36120	30 31880	33 28460	35 26510	36,7 25000	40,0 25000	m kg										
35	20,8 50000	23 44470	25 40340	27 36850	30 32540	33 29050	34,1 27830	m kg												
30	20,7 50000	23 44130	25 40020	27 36560	29,1 33330	m kg														



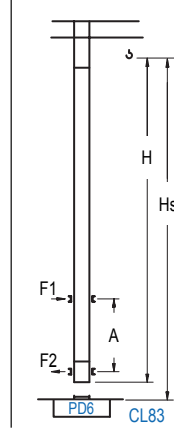
# COMANSA 21 LC 750

## FLAT TOP TOWER CRANE



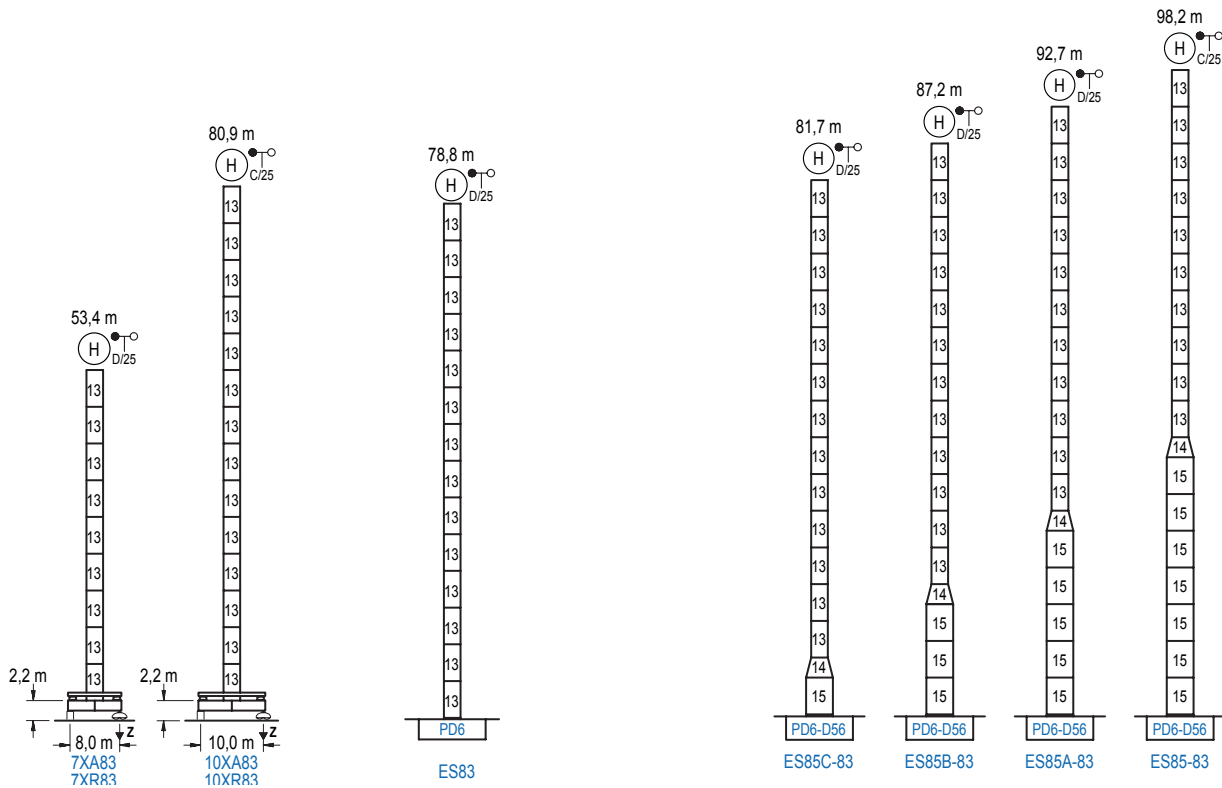
	7XA83	10XA83
A max	40,7	68,2
A min	40,7	40,7
B max	-	49,5
B min	-	33,0
C max	62,2	62,2
H max	102,9	152,4

	ES83
A max	66,1
A min	38,6
B max	-
B min	49,5
C max	62,2
H max	128,3



H	Hs < 400 m	
	A max (m)	A min (m)
<b>60,5 m</b> 6x D36B + 4x D36A + CLD36A-28	21,9	9,0
<b>55,0 m</b> 5x D36B + 4x D36A + CLD36A-28	19,1	9,0
<b>49,5 m</b> 4x D36B + 4x D36A + CLD36A-28	16,4	9,0

n°	Ref.	∅	h
13	D36B	2,5	5,5
22	D36A	2,5	5,5
19	CLD36A-28	2,5	3,8



Z máx.	In service	7XR83..... 179 t 10XR83..... 178 t
	Out of service	7XR83..... 131 t 10XR83..... 187 t

n°	Ref.	∅	h
13	D36B	2,5	5,5

n°	Ref.	∅	h
13	D36B	2,5	5,5
14	TD56D36	4,0	3,0
15	D56	4,0	5,5

# COMANSA 21 LC 750

## FLAT TOP TOWER CRANE

