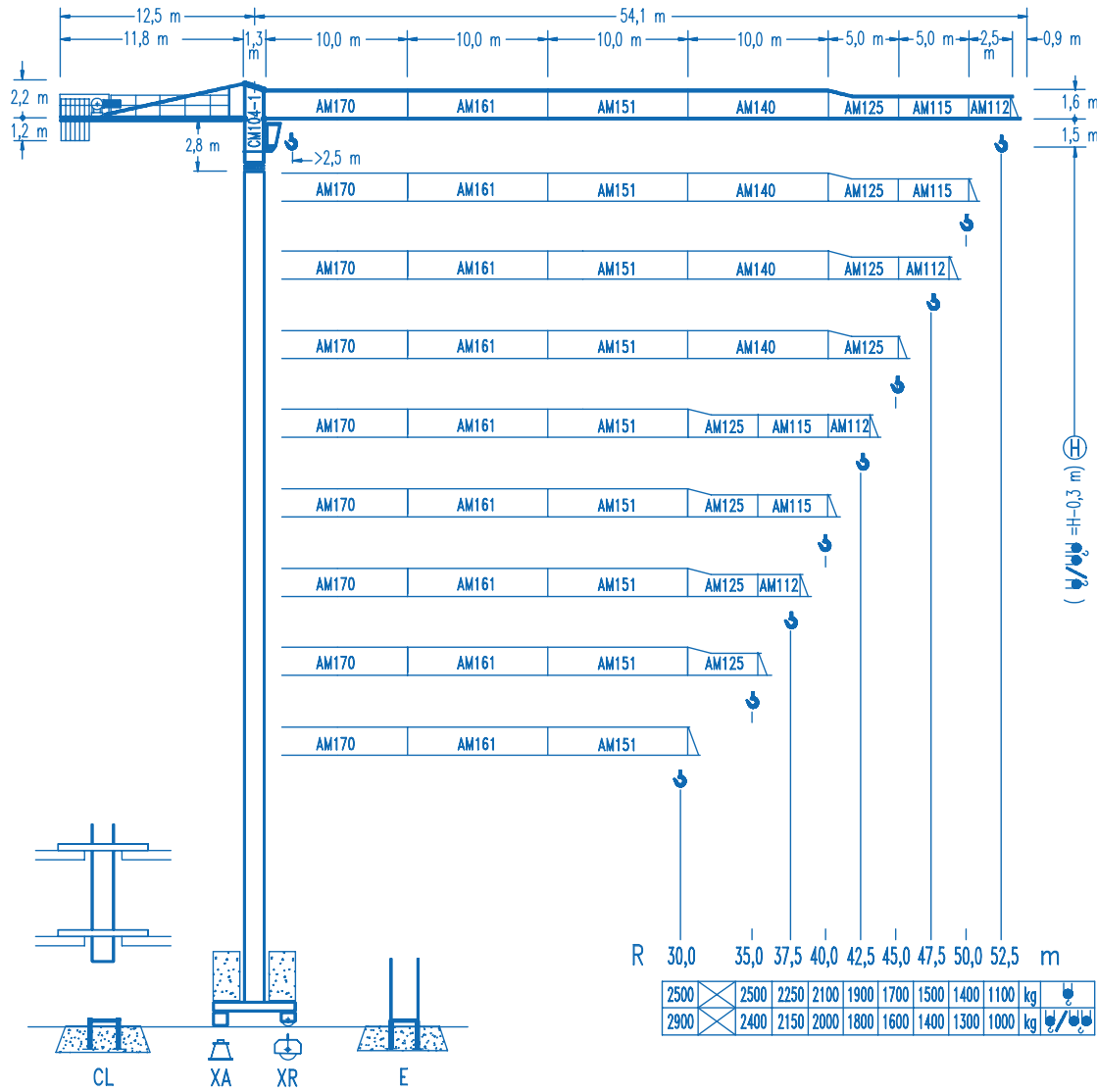


# COMANSA LC 5211

## FLAT TOP TOWER CRANE

Useful cab or Pedestrian Operated Crane with reasonable lifting duties and a range of jib lengths from 15 metres up to 52.5 metres in 2.5 metre increments. The crane can be mounted on 3.2 to 6 metre ballasted base crosses or on fixing angles. The LC 5211 can be erected to greater heights with larger tower sections.

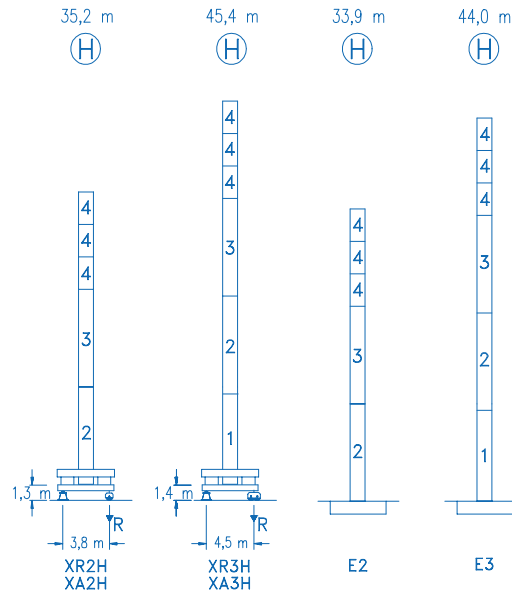


CE  
DIN 15018 H1 B3

R	R(Cmax)	Cmax	20,0	25,0	30,0	35,0	37,5	40,0	42,5	45,0	47,5	50,0	52,5	m
52,5	26,8 m	2500	2500	2500	2190	1820	1680	1550	1440	1340	1250	1170	1100	⚙️
	14,2 m	5000	3380	2600	2080	1720	1580	1450	1340	1240	1150	1070	1000	
50,0	30,8 m	2500	2500	2500	2500	2150	1980	1840	1710	1590	1490	1400	⚙️	
	16,3 m	5000	3960	3060	2470	2050	1880	1740	1610	1490	1390	1300		
47,5	30,9 m	2500	2500	2500	2500	2160	1990	1850	1720	1600	1500	⚙️		
	16,3 m	5000	3980	3080	2480	2060	1890	1750	1620	1500	1400			
45,0	32,4 m	2500	2500	2500	2290	2110	1960	1820	1700	⚙️				
	17,1 m	5000	4200	3250	2630	2190	2010	1860	1720		1600			
42,5	33,6 m	2500	2500	2500	2500	2380	2200	2040	1900	⚙️				
	17,8 m	5000	4380	3390	2740	2280	2100	1940	1800					
40,0	34,4 m	2500	2500	2500	2450	2260	2100	⚙️						
	18,2 m	5000	4500	3490	2820	2350	2160		2000					
37,5	34,2 m	2500	2500	2500	2440	2250	⚙️							
	18,1 m	5000	4470	3470	2800	2340		2150						
35,0	35,0 m	2500	2500	2500	2500	⚙️								
	18,5 m	5000	4580	3560	2880		2400							
30,0	30,0 m	2500	2500	2500	⚙️									
	18,6 m	5000	4610	3580		2900								

# COMANSA LC 5211

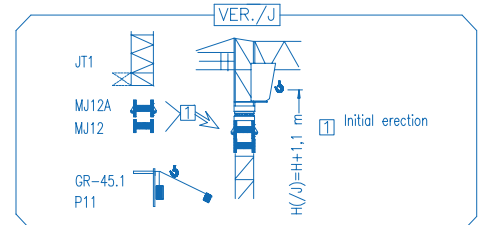
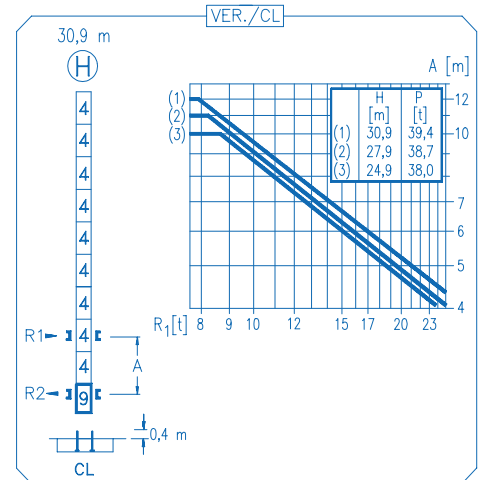
## FLAT TOP TOWER CRANE



N	Ref.	h
1	MT123	10,1 m
2	MH124A	11,8 m
3	MH124-1	11,8 m
4	MH121	3,0 m
9	CL20	2,2 m

MH124=(4)MH121-0,2 m

- H=H+0,2 m
- H=H
- H=H
- H=H-0,2 m



<b>R. máx. In service</b>	XR2H ..... 46,0 t
	XR3H ..... 49,0 t

<b>R. máx. Out of service</b>	XR2H ..... 50,9 t
	XR3H ..... 72,4 t

**CS2-1.9**

1,9 kW

16 m/min  
48 m/min

**CFU-2.2**

2,2 kW

0 80 m/min

**GR-9.0**

90 Nm

0 0,7 rpm

**EFU2-18-12**

250 m

18 kW

2,5  
2  
1,5  
1  
0,5  
0

1  
m/min

40 60 76

1,1

5  
4  
3  
2  
1

1  
m/min

20 30 38

2,2

<b>Supply voltage</b>	400 V 3 ph 50 Hz
-----------------------	------------------------