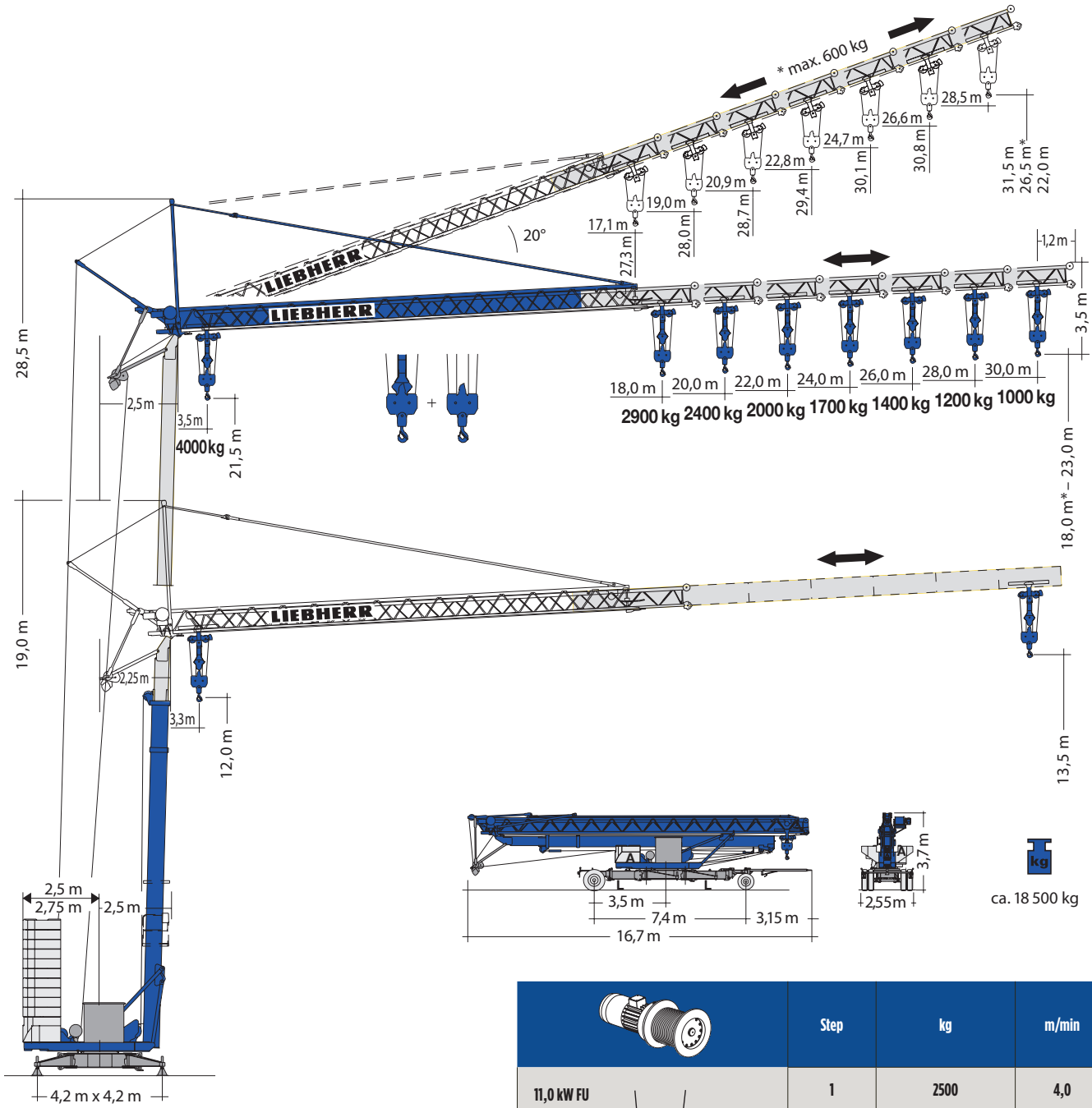


LIEBHERR 32TT

SELF-ERECTING TOWER CRANE

Small self erecting tower crane with a telescopic jib and multiple tower heights.

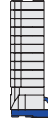





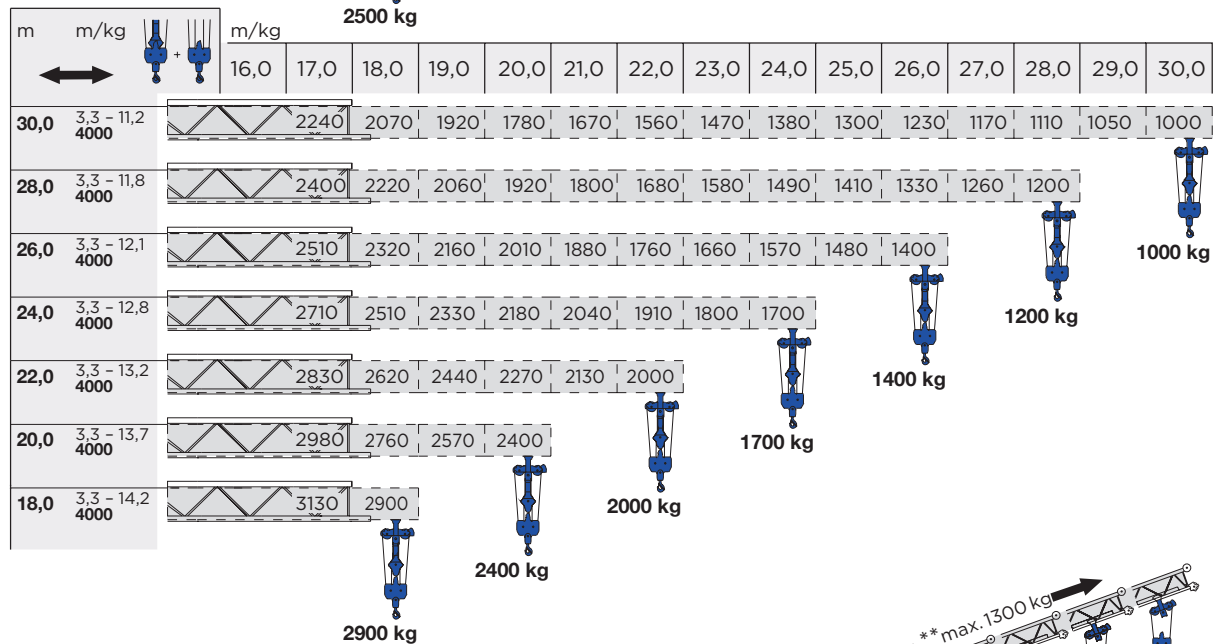
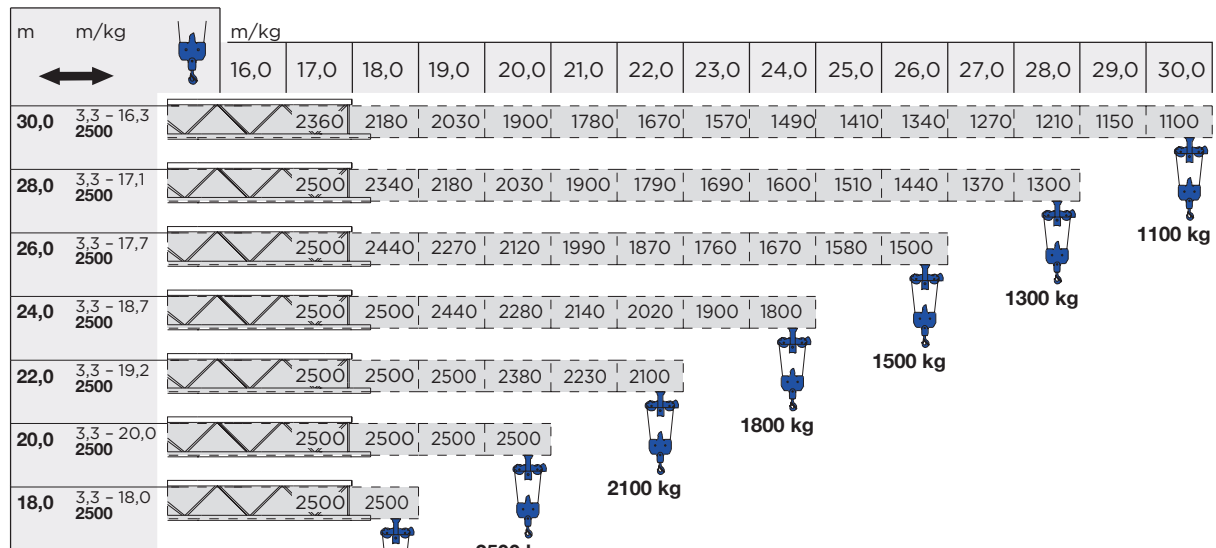
	<p>0 → 0,8 U/min sl/min tr/min</p>	<p>2,2 kW EDC</p>
	<p>10,0 m/min</p>	<p>1,8 kW 2,8 kW 20</p>

	Step	kg	m/min
11,0 kW FU	1	2500	4,0
	2	2500	20,0
	3	1300	38,0
	4	1000	50,0
	1	2000 24000	4,0 2,0
	2	2000 4000	20,0 10,0
	3	1300 2600	38,0 19,0
	4	1000 2000	50,0 25,0

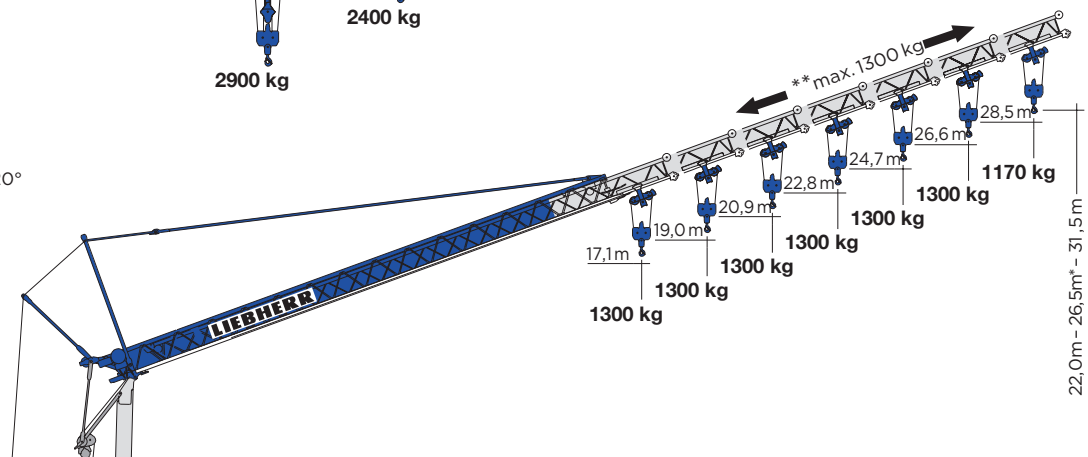
LIEBHERR 32TT

SELF-ERECTING TOWER CRANE

	1 x A = 3000 kg	22250 kg	r = 2,5 m		ca. 12200 kg
	11 x B = 19250 kg				
	1 x A = 3000 kg	20500 kg	r = 2,75 m		
	10 x B = 17500 kg				



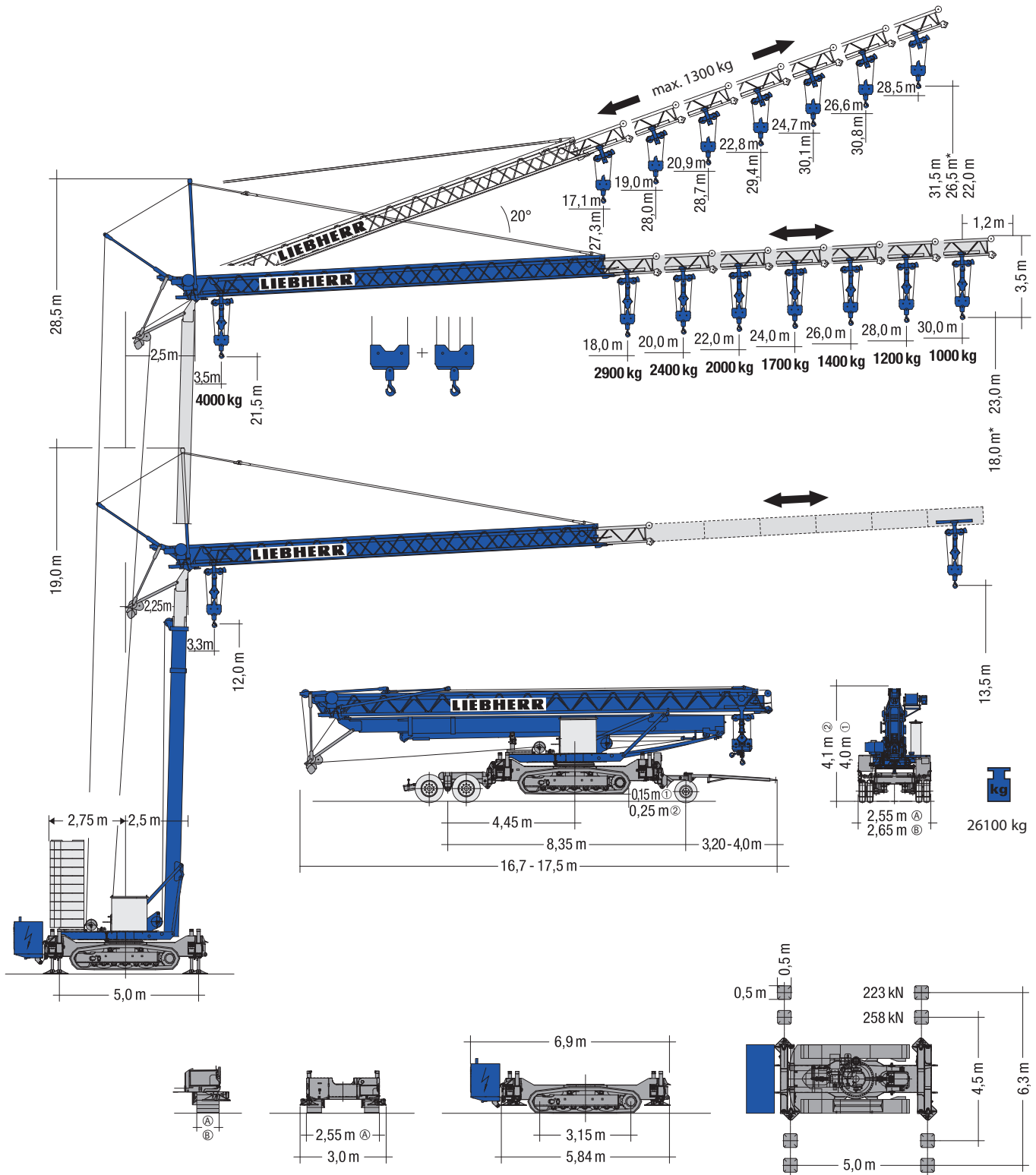
Elevated jib 20°



LIEBHERR 32TR CRAWLER VERSION

SELF-ERECTING TOWER CRANE

Small self erecting tower crane with a telescopic jib and multiple tower heights. On crawlers and can be run on power or generator.



LIEBHERR 32TT

SELF-ERECTING TOWER CRANE

