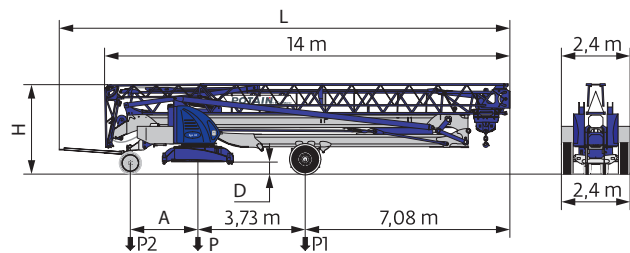
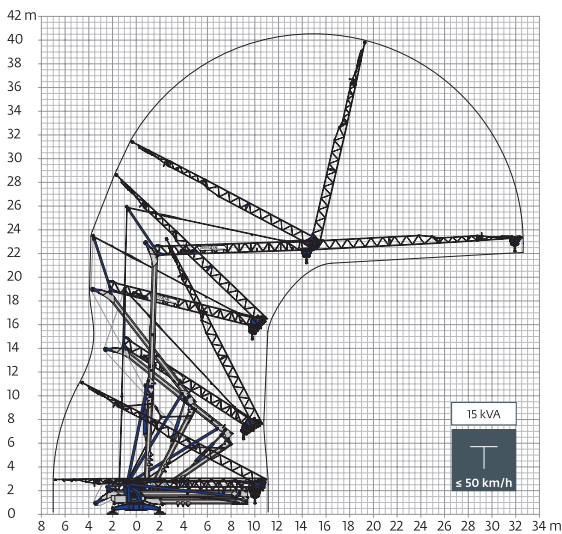
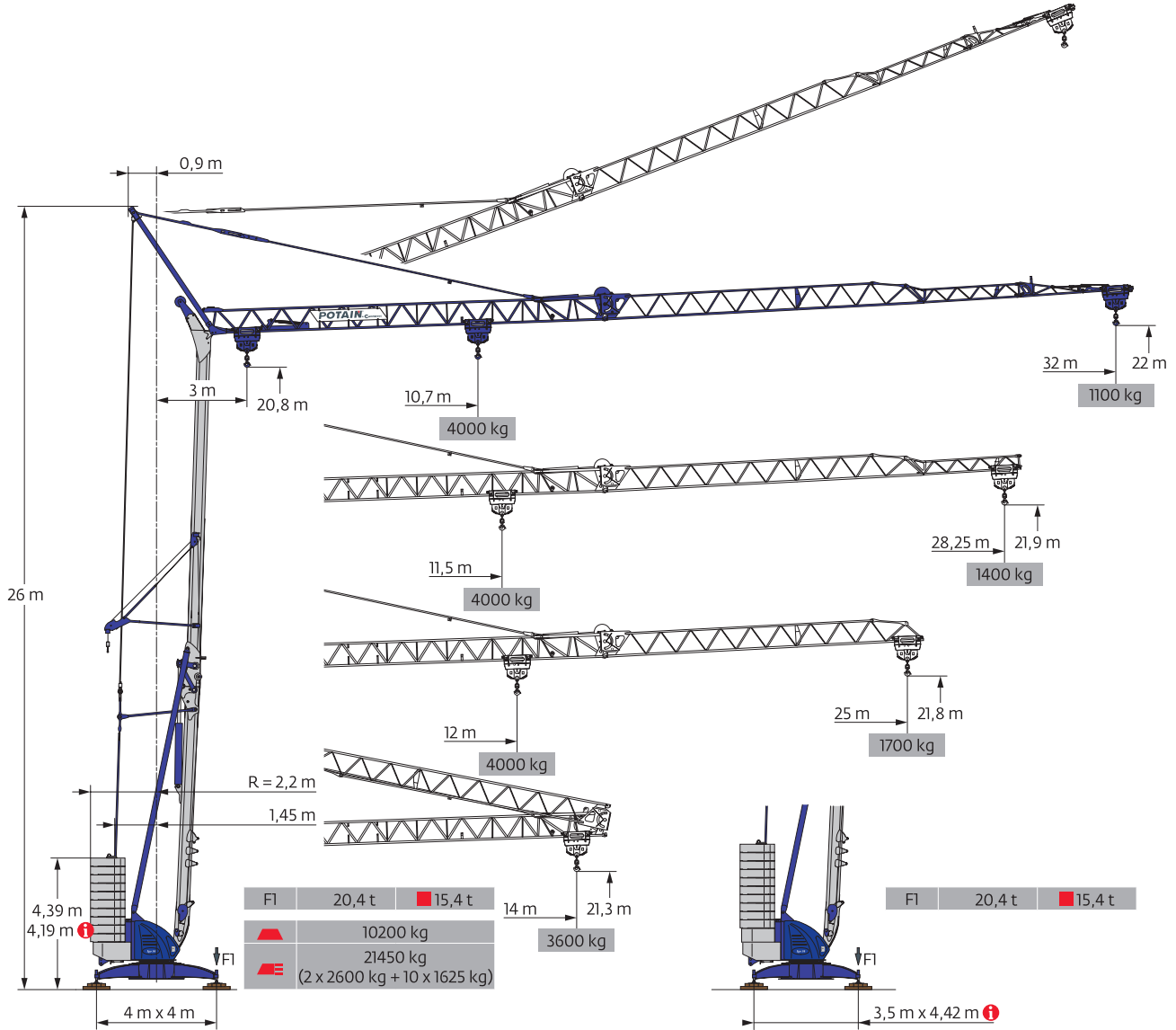


POTAIN IGO 36

SELF-ERECTING TOWER CRANE

Small reliable self erecting tower crane. Can be delivered and installed in a few hours. Pedestrian operated by radio control.

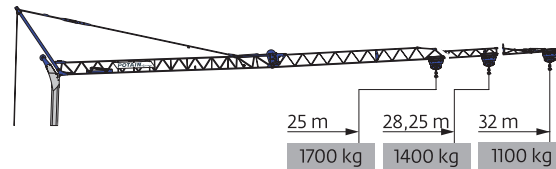


POTAIN IGO 36

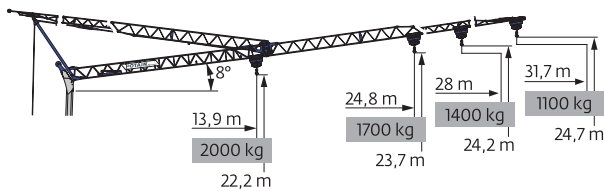
SELF-ERECTING TOWER CRANE

400 V - 50 Hz 480 V - 60 Hz												ch - PS hp	kW	
	15 LVF 10 OPTIMA	m/min	3,6	18	30	54	66	1,8	9	15	27	33	15	11
		kg	2000	2000	2000	1000	500	4000	4000	4000	2000	1000		
	3 DVF 5	m/min	15 - 30 - 41									3	22,2	
	RVF 41 Optima+	tr/min U/min rpm	0 → 0,8									4	3	

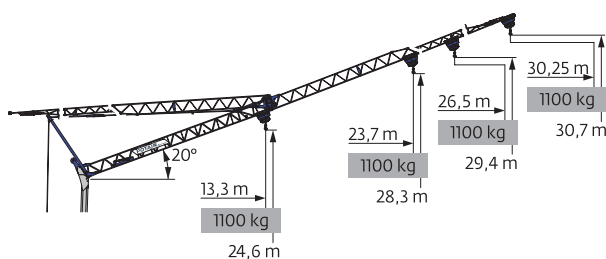
IEC 60204-32	
400V (+10%) 50 Hz 480 V (+6-10%) 60 Hz	18 kVA



32 m	3	▶	12,87	13	14	m	10,7	11	12	13	14	15	16	17	18	18,5	19	19,5	20	22	25	27	30	32	m		
			4000	3950	3600	kg	4000	3870	3460	3125	2845	2610	2410	2230	2080	2000	1940	1880	1820	1615	1375	1250	1090	1000	kg		
						kg													2000	1940	1880	1820	1615	1375	1250	1090	1000
						kg													2000	1940	1730	1485	1350	1190	1100	kg	
28,25 m	3	▶	12,87	13	14	m				11,5	12	13	14	15	16	17	18	19	20	21	22	25	27	28,25	m		
			4000	3950	3600	kg				4000	3790	3420	3120	2860	2640	2450	2280	2135	2000	1885	1780	1520	1375	1300	kg		
						kg													2000	1885	1780	1520	1375	1300	kg		
						kg													2000	1890	1620	1480	1400		kg		
25 m	3	▶	12,87	13	14	m				12	13	14	15	16	17	18	19	20	20,8	21	21,8	23	25	m			
			4000	3950	3600	kg				4000	3600	3280	3010	2775	2580	2400	2250	2110	2000	1985	1895	1775	1600	kg			
						kg													2000	1985	1895	1775	1600	kg			
						kg														2000	1875	1700		kg			



32 m	3	▶	18,3	19	19,5	21	23	25	26	28	30	31,7	m
			2000	1910	1845	1685	1505	1355	1290	1175	1075	1000	kg
													kg
													kg
28,25 m	3	▶	19,8	20,8	21	23	25	26	28	m			
			2000	1890	1860	1660	1500	1425	1300	kg			
										kg			
										kg			
25 m	3	▶	20,7	21,6	23	24,8	m						
			2000	1895	1755	1600	kg						
							kg						
							kg						



32 m	3	▶										30,25	m
												1000	kg
												1100	kg
28,25 m	3	▶										26,5	m
												1000	kg
												1100	kg
25 m	3	▶										23,7	m
												1000	kg
												1100	kg