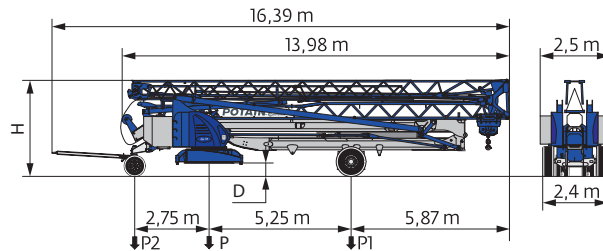
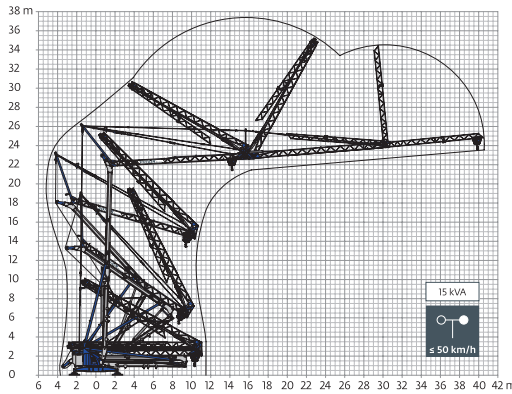
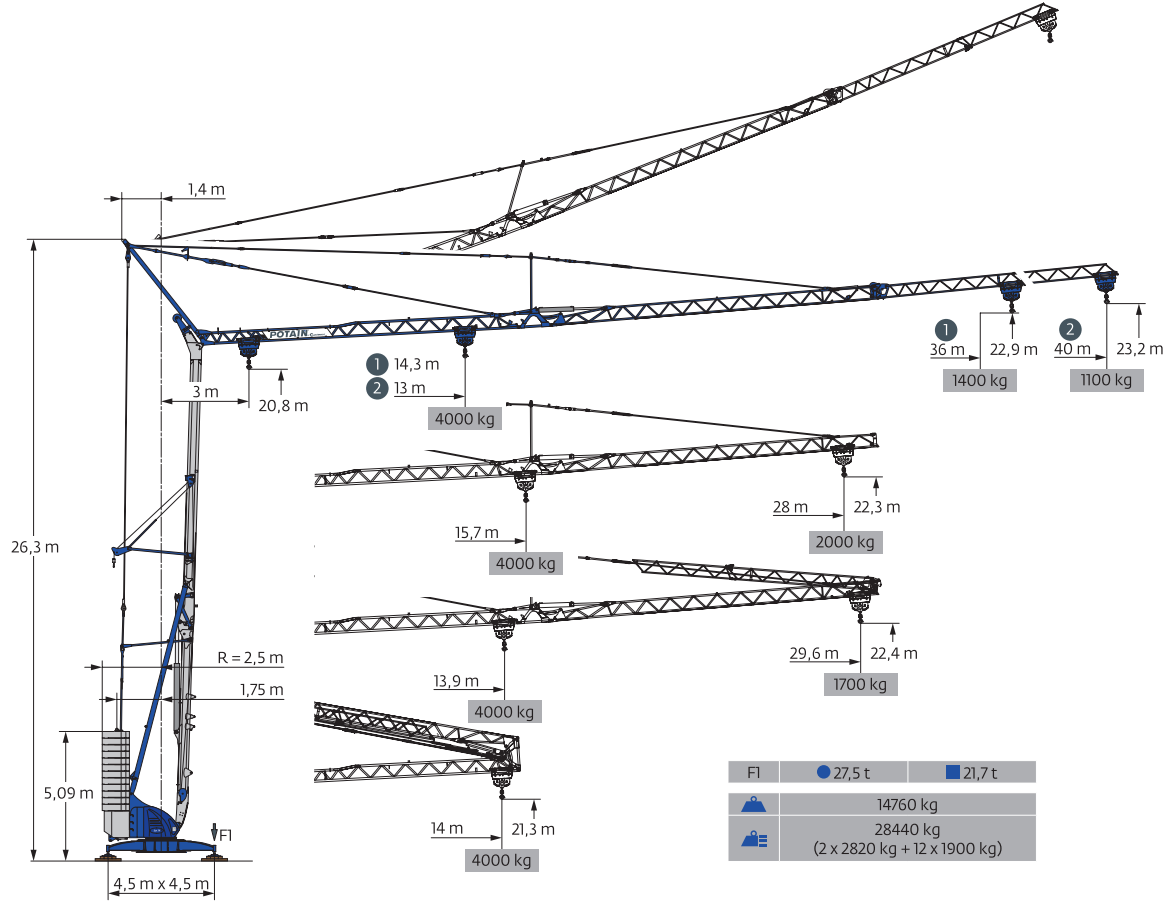


POTAIN IGO 50

SELF-ERECTING TOWER CRANE

Self erecting tower crane. Pedestrian operated by radio control. Easily delivered and erected in a few hours



400 V - 50 Hz 480 V - 60 Hz												ch - PS hp	kW	
	20 LVF 15 OPTIMA	m/min	3,3	17	29	55	69	1,6	8,5	14,5	27,5	34,5	15	11
		kg	3000	3000	3000	1500	750	6000	6000	6000	3000	1500		
	3 DVF 5	m/min	15 - 30 - 45(0 ⇒ 1000kg) 15-30-41 (1000 ⇒ 4000kg)										3	2,2
	RVF 51 Optima+	tr/min U/min rpm	0 ⇒ 0,8										5,5	4

POTAIN IGO 50

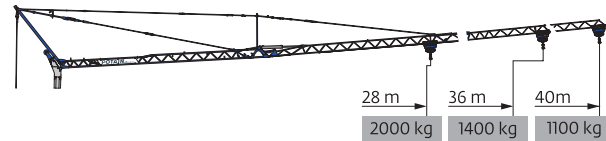
SELF-ERECTING TOWER CRANE

IEC 60204-32

kVA

400 V (+10%-10%) 50 Hz / 480 V (+6% -10%) 60 Hz

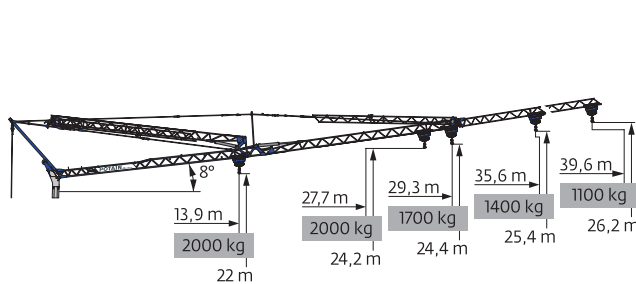
→ 17 kVA



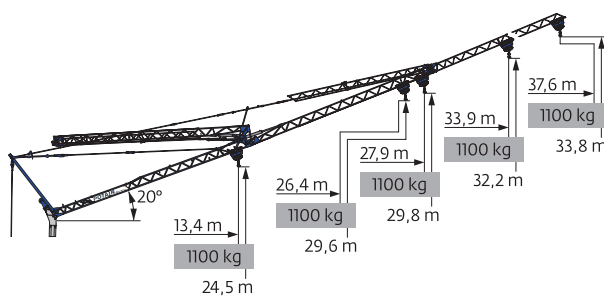
40 m	3	▶	14	m		3	▶	13	14	15	16	17	18	19	20	23	24,2	25	27	30	32	35	37	40	m			
					4000					4000	3665	3365	3105	2885	2690	2520	2365	2000	1875	1800	1640	1440	1330	1185	1105	1000	kg	
					2000														2000	1875	1800	1640	1440	1330	1185	1105	1000	kg
					2000																2000	1755	1550	1435	1290	1210	1100	kg
36 m	3	▶	14	m		3	▶	14,3	15	16	17	18	19	20	22	24	25,3	26,6	27	30	32	35	36	m				
					4000					4000	3770	3485	3235	3020	2830	2660	2370	2135	2000	1890	1850	1630	1505	1345	1300	kg		
					2000															2000	1890	1850	1630	1505	1345	1300	kg	
					2000																2000	1960	1735	1610	1450	1400	kg	
28 m	3	▶	14	m		3	▶		15,7	17	18	19	20	22	23	25	26	27	28	m								
					4000				4000	3635	3395	3180	2990	2670	2530	2290	2190	2090	2000	kg								
					2000															2000	kg							
					2000																2000	kg						



40 m	3	▶	13,9	15	16	17	18	19	20	22	24,7	25	25,8	27	29,6	m		
					4000	3655	3375	3135	2925	2740	2575	2295	2000	1965	1890	1790	1600	kg
													2000	1965	1890	1790	1600	kg
														2000	1895	1700		kg



40 m	3	▶	22,7	23,9	25	27	30	32	35	37	39,6	m					
					2000	1875	1780	1620	1420	1310	1170	1090	1000	kg			
									2000	1900	1735	1530	1420	1275	1190	1100	kg
36 m	3	▶	25,1	26,3	27	30	32	35	35,6	m							
					2000	1890	1825	1610	1485	1330	1300	kg					
									2000	1935	1710	1585	1430	1400	kg		
28 m	3	▶				27,7	m										
							2000	kg									
								2000	kg								
40 m	3	▶	24,4	25,5	27	29,3	m										
					2000	1890	1770	1600	kg								
								2000	1870	1700	kg						
40 m	3	▶	13,9	m													
					2000	kg											
								2000	kg								



40 m	3	▶									37,6	m		
												1000	kg	
													1100	kg
36 m	3	▶									33,9	m		
												1000	kg	
													1100	kg
28 m	3	▶				26,4	m							
							1000	kg						
								1100	kg					
40 m	3	▶				27,9	m							
								1000	kg					
									1100	kg				
40 m	3	▶	13,4	m										
					1000	kg								
								1100	kg					