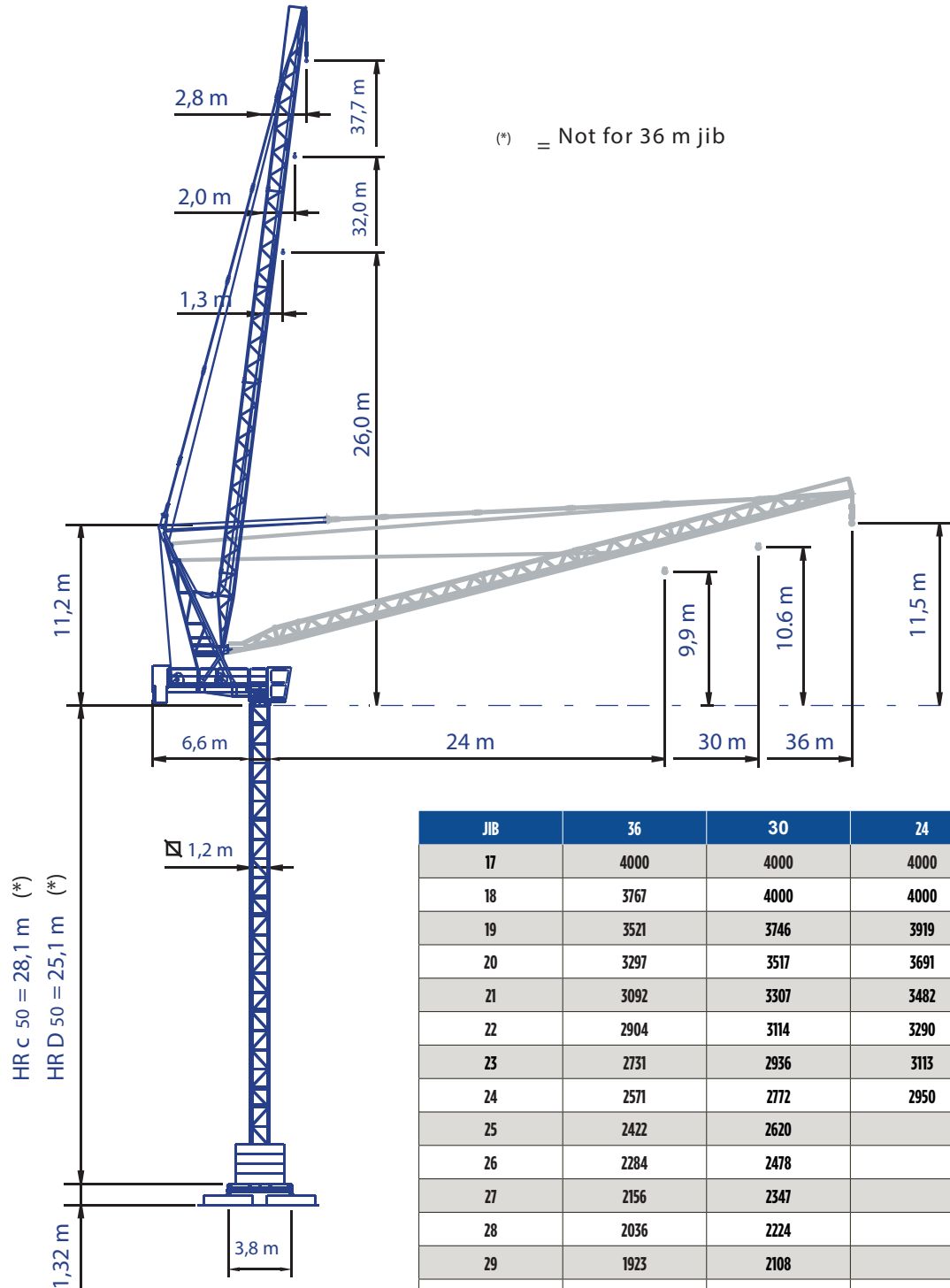


# RAMONDI LR60

## LUFFING JIB TOWER CRANE

Compact lifting tower crane.



(\*) = Not for 36 m jib

HR c 50 = 28,1 m (\*)  
HR D 50 = 25,1 m (\*)

JIB	36	30	24
17	4000	4000	4000
18	3767	4000	4000
19	3521	3746	3919
20	3297	3517	3691
21	3092	3307	3482
22	2904	3114	3290
23	2731	2936	3113
24	2571	2772	2950
25	2422	2620	
26	2284	2478	
27	2156	2347	
28	2036	2224	
29	1923	2108	
30	1818	2000	
31	1719		
32	1625		
33	1537		
34	1454		
35	1375		
36	1300		

RAMONDI LR60

LUFFING JIB TOWER CRANE

