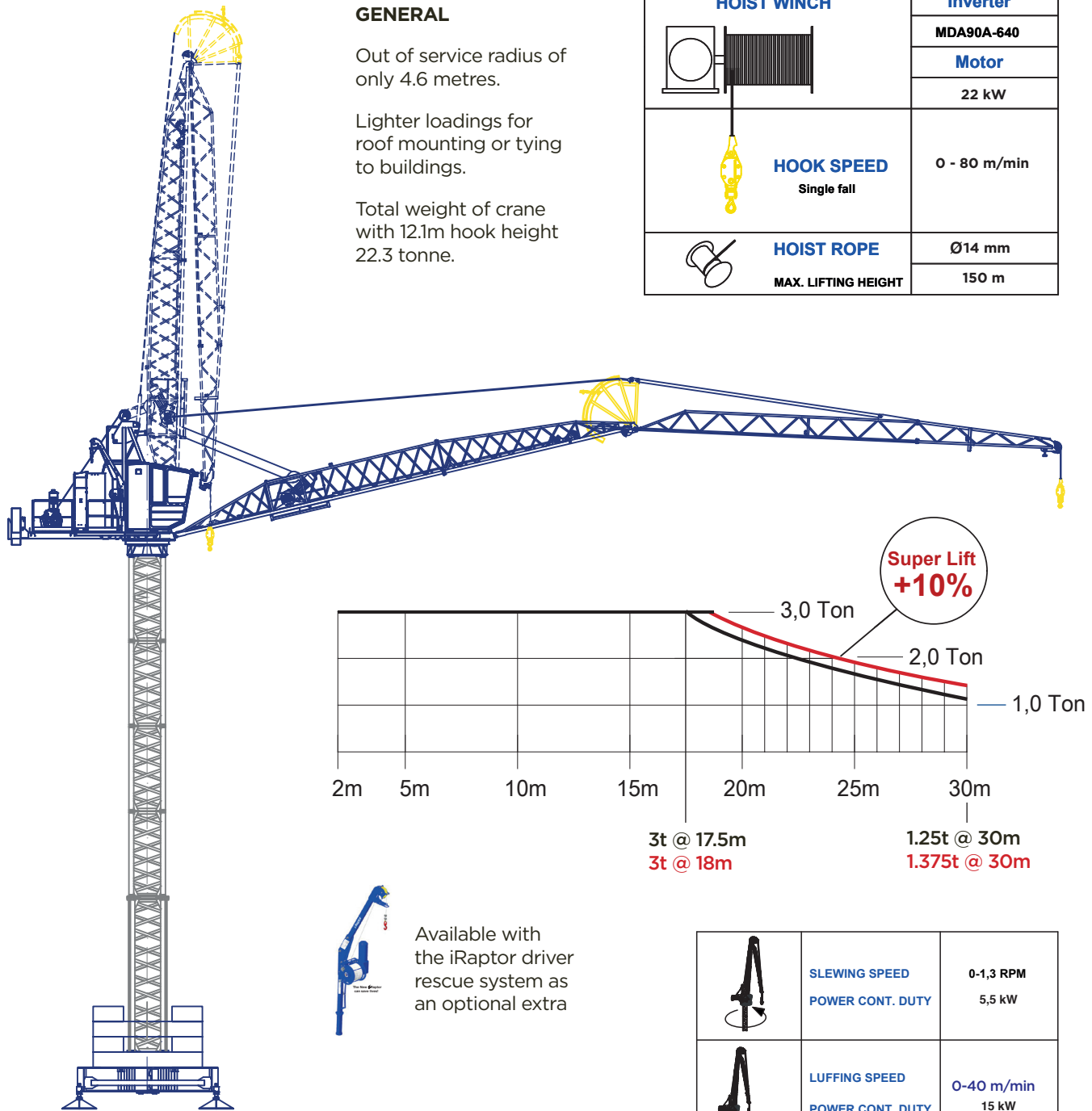


RAPTOR 48 Energy Saving

ARTICULATED JIB TOWER CRANE

Small articulated jib tower crane, that provides a solution for restricted airspace problems. Regenerated energy can be returned to the grid or power other site equipment.

Can be pedestrian operated by radio control if required.

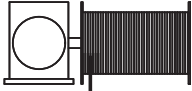




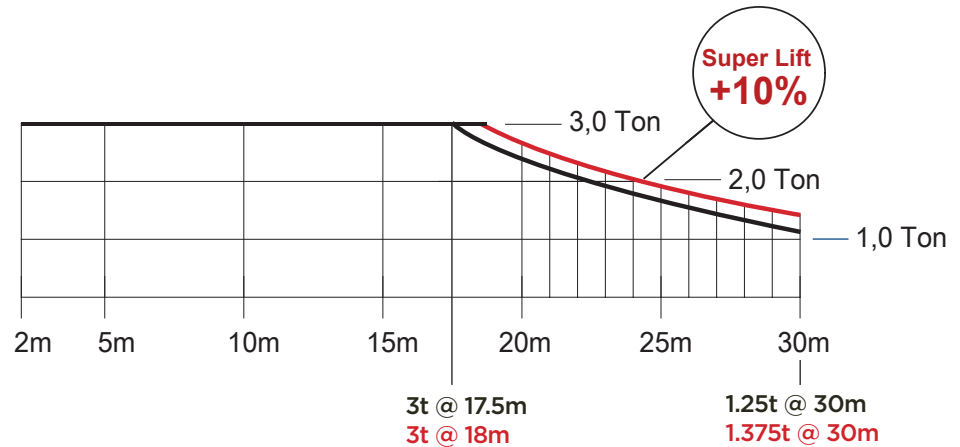
GENERAL

Out of service radius of only 4.6 metres.



Lighter loadings for roof mounting or tying to buildings.

Total weight of crane with 12.1m hook height 22.3 tonne.


 HOIST WINCH	Inverter
	MDA90A-640
 HOOK SPEED Single fall	Motor
	22 kW
 HOIST ROPE MAX. LIFTING HEIGHT	0 - 80 m/min
	Ø14 mm
	150 m



Available with the iRaptor driver rescue system as an optional extra

	SLEWING SPEED	0-1,3 RPM
	POWER CONT. DUTY	5,5 kW
	LUFFING SPEED	0-40 m/min
	POWER CONT. DUTY	15 kW

Standard tower up to 35m, taller tower on request.

	400 V , 50 Hz	CONTROL VOLTAGE
	480 V , 60 Hz	24 VDC
Main fuse	100 A (400 V, 50 Hz)	
Power Cable	Minimum 4x25mm²	

RAPTOR 48 Energy Saving

ARTICULATED JIB TOWER CRANE

