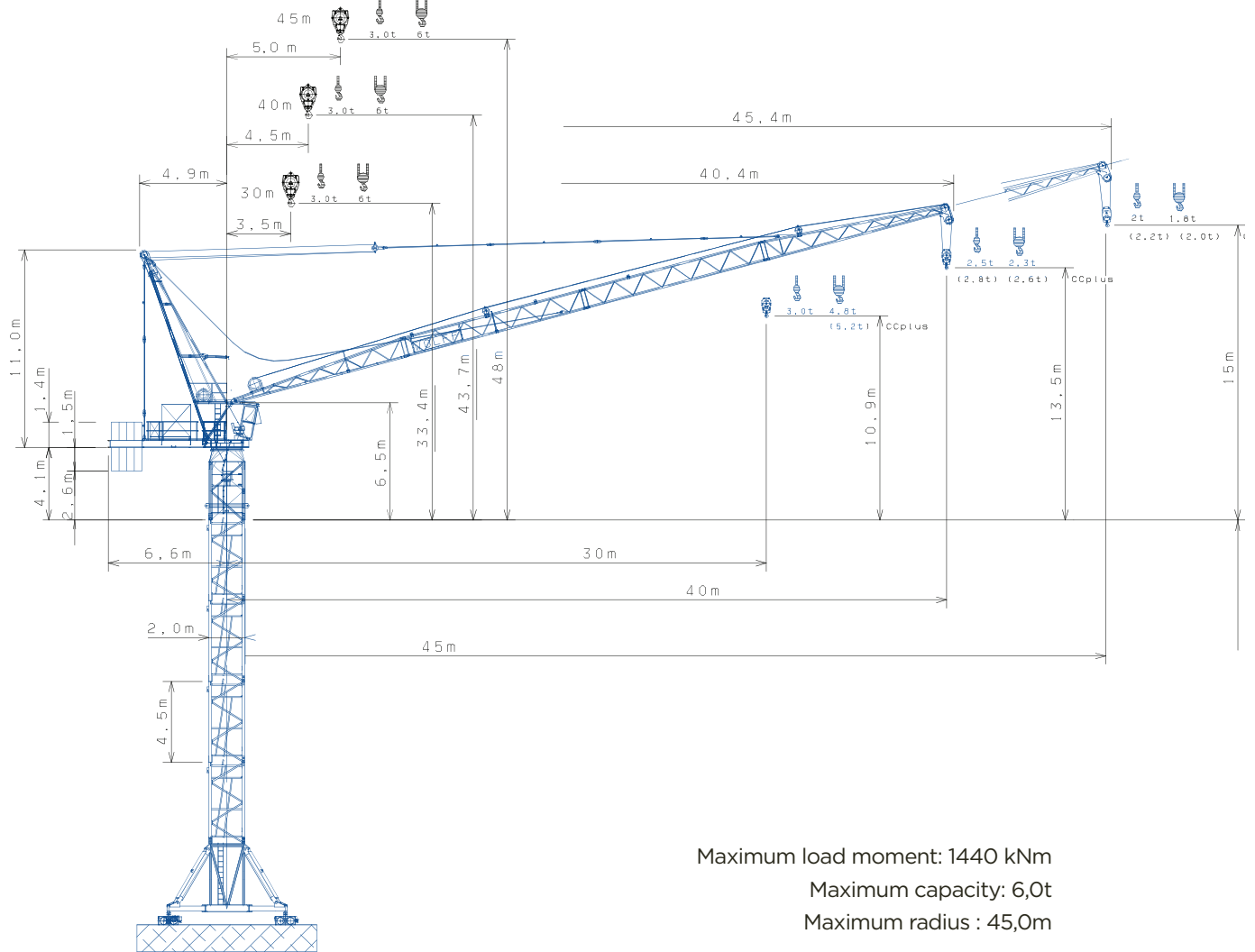


WOLFF 100 B

LUFFING JIB TOWER CRANE

Medium size luffing jib tower crane with a low power consumption.



Maximum load moment: 1440 kNm
 Maximum capacity: 6,0t
 Maximum radius : 45,0m

Pos.	Stck	Description	Coll	Length	Width	Height	Weight	Volume
1	1	TOWER TOP UPPER PART		11,89	1,95	2,22	4300	51,47
2	1	TOWER TOP LOWER PART		5,63 5,63	2,18 2,18	2,42 2,42	2740 5500	29,70 29,70
3	1	DRIVER'S CABIN WITH SUSPENSION		3,27	2,10	2,76	1110	18,95
4	1	COUNTER JIB COMPLETE		5,49	1,84	2,30	2200	23,23
5	1	JIB PART 1		10,27	2,28	1,16	2420	27,16
6	1	JIB PART 2		10,50	1,11	1,59	1570	18,53
7	1	JIB PART 3		10,50	1,11	1,22	830	14,22
8	1	JIB PART 4		5,33	1,11	1,22	450	7,22
9	1	JIB PART 5		10,70	1,60	2,15	1130	36,81
10	1	HOOK BLOCK 6 T		0,50	0,22	1,11	350	0,12
11	1	HOOK BLOCK 3 T		0,27	0,28	0,70	200	0,05
12	1	STANDARD HANDRAIL		2,55	1,11	1,00	90	2,83
13	1	BOX (SMALL PART'S)		1,60	0,90 m	0,80	300	1,15

WOLFF 100 B

LUFFING JIB TOWER CRANE

WORKING SPEEDS



Motor (kW)	37	37	37	6	2 x 5,5
speed	0...120 M/MIN	0...60 m/min	1,5 min	0,65 - 1 min	25 m/min

LOAD DATA

		Jib radius (m)						
		20	24	30	35	40	45	
45	5,0 - 32,5	 3,0 t	3,0	3,0	3,0	2,8	2,3	2,0
40	4,5 - 34,5		3,0	3,0	3,0	3,0	2,5	
30	3,5 - 30,0		3,0	3,0	3,0			

45	5,0 - 19,0	 6,0 t	5,6	4,3	3,3	2,7	2,2	1,8
40	4,5 - 22,0		6,0	5,0	3,8	3,0	2,3	
30	3,5 - 24,0		6,0	5,8	4,8			

