

# SPIERINGS SK 597 AT4

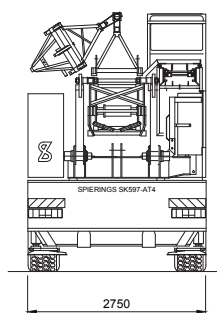
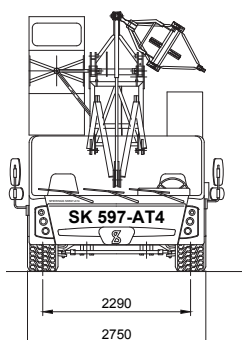
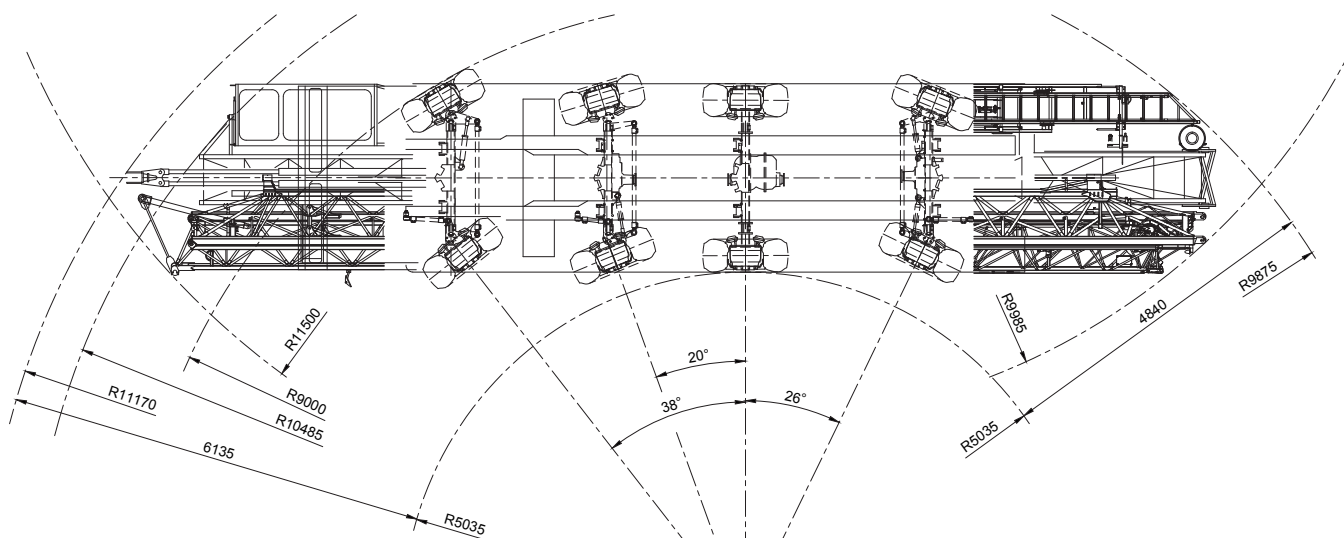
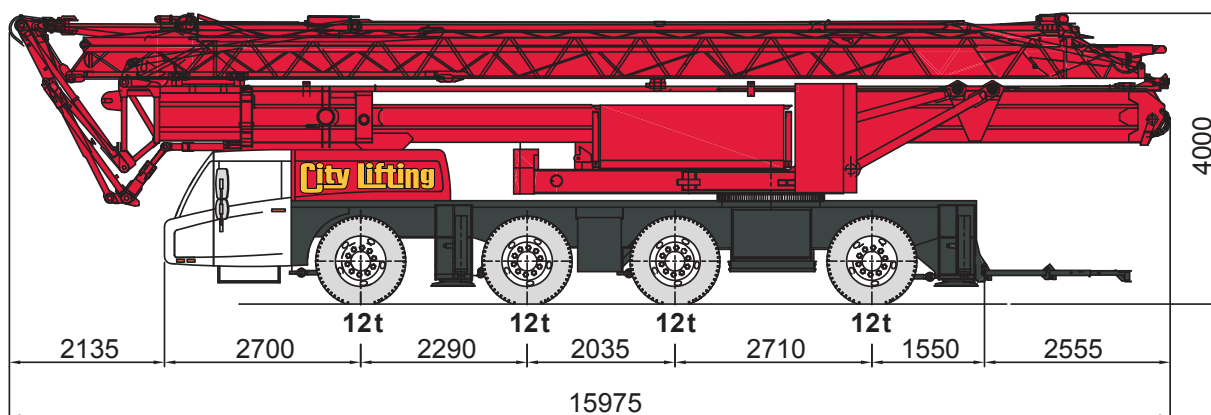
# City Lifting

CRANE HIRE SPECIALISTS

## MOBILE TOWER CRANES

[www.citylifting.co.uk](http://www.citylifting.co.uk)

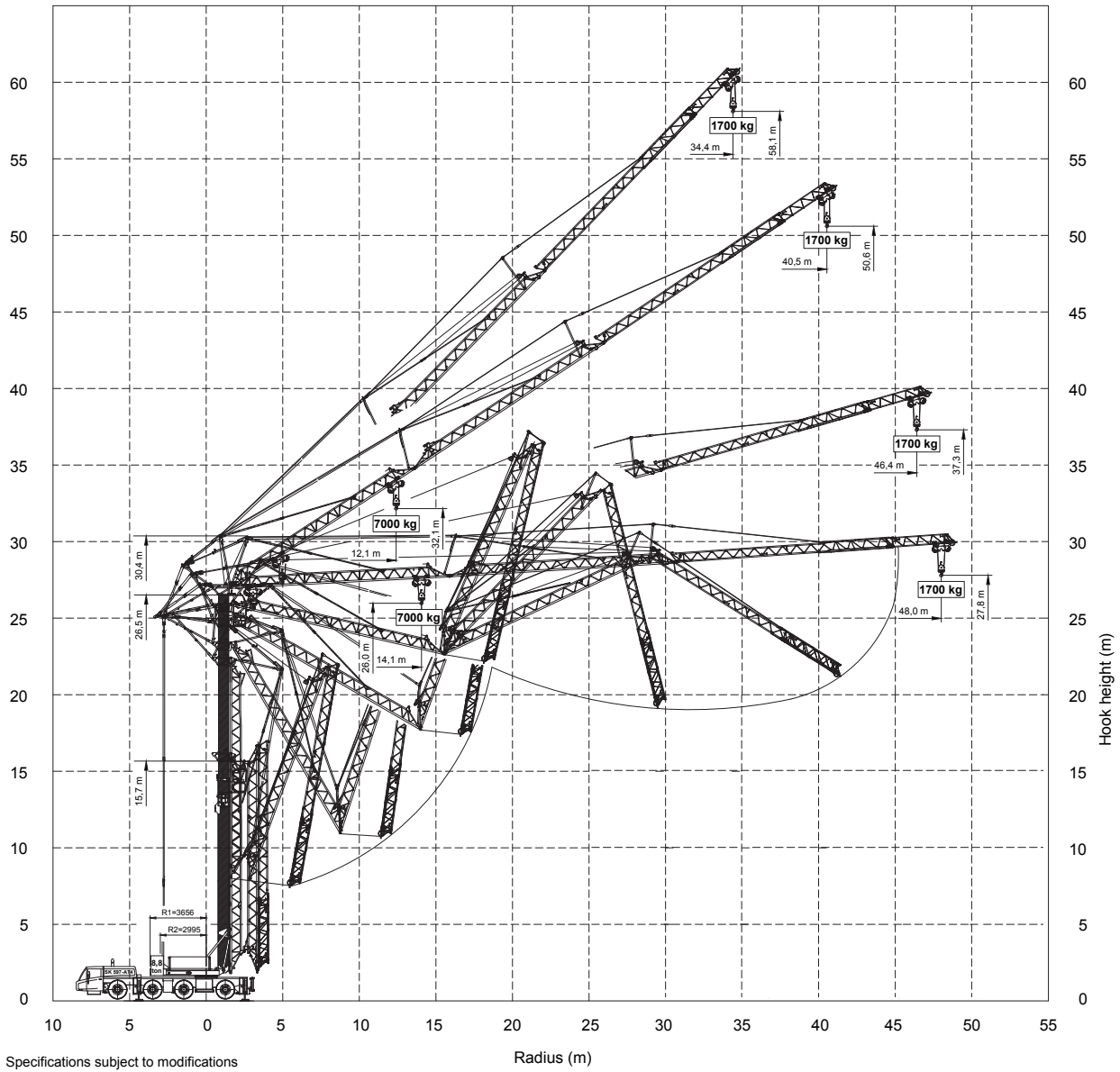
The Kato 130RF is an extremely versatile crane. Less than 2 metres wide and a carrier length of 6 metres, it is still very strong for its size. Outriggers can be set in any position and the crane will calculate allowable lifting capacity.



DISCLAIMER: Product introduction sheet supplied for reference purposes. Please see supplied USB stick or [www.citylifting.co.uk](http://www.citylifting.co.uk) for manufacturer detailed technical

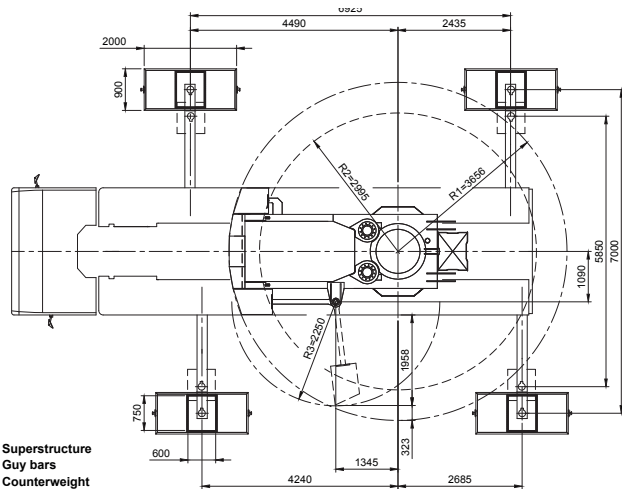
# SPIERINGS SK 597 AT4

## MOBILE TOWER CRANES



Specifications subject to modifications

Radius (m)



R1 : Superstructure  
R2 : Guy bars  
R3 : Counterweight

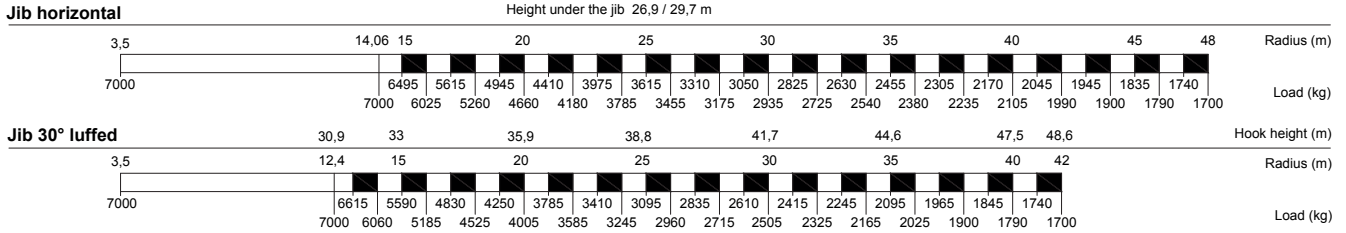
Outrigger support base	
Max. outrigger force	360 kN
Outrigger support plates	2000x900 mm
Surface	1,80 m <sup>2</sup>
Ground pressure	200kN/m <sup>2</sup>

Counter weight slewing radius  
R1=3656

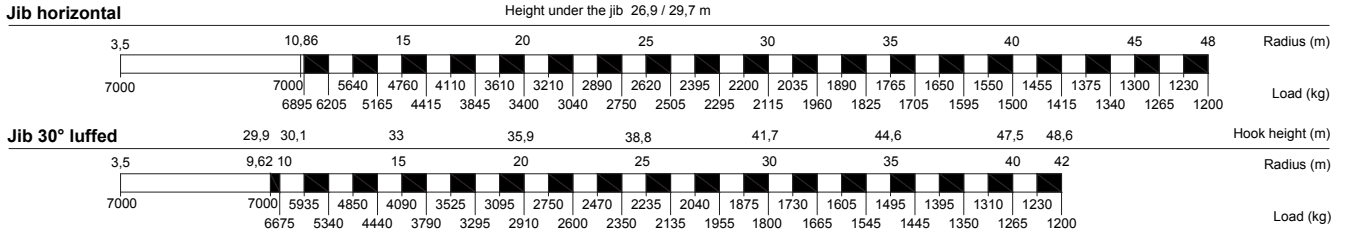
# SPIERINGS SK 597 AT4

## MOBILE TOWER CRANES

### Lifting chart outrigger support base 6,925 m x 7,0 m



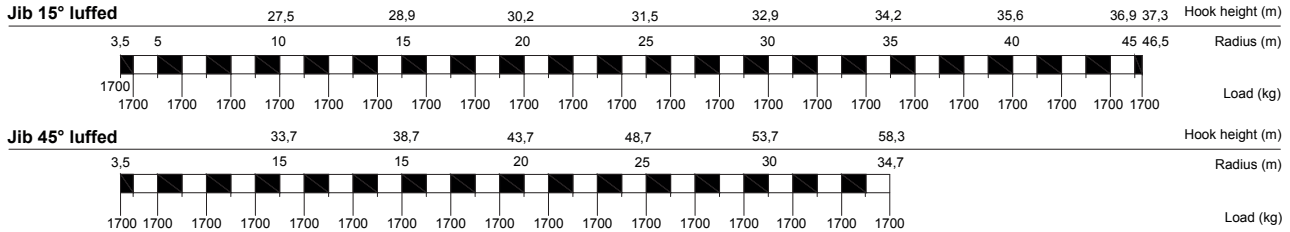
### Lifting chart outrigger support base 6,925 m x 5,85 m



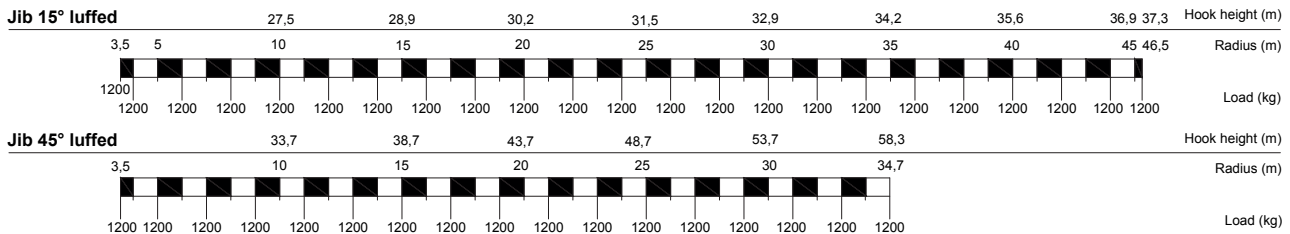
Specifications subject to modifications

84-00597101

### Lifting chart outrigger support base 6,925 m x 7,0 m



### Lifting chart outrigger support base 6,925 m x 5,85 m



Specifications subject to modifications

84-00597101