

# SPIERINGS SK 597E LIFT AT4

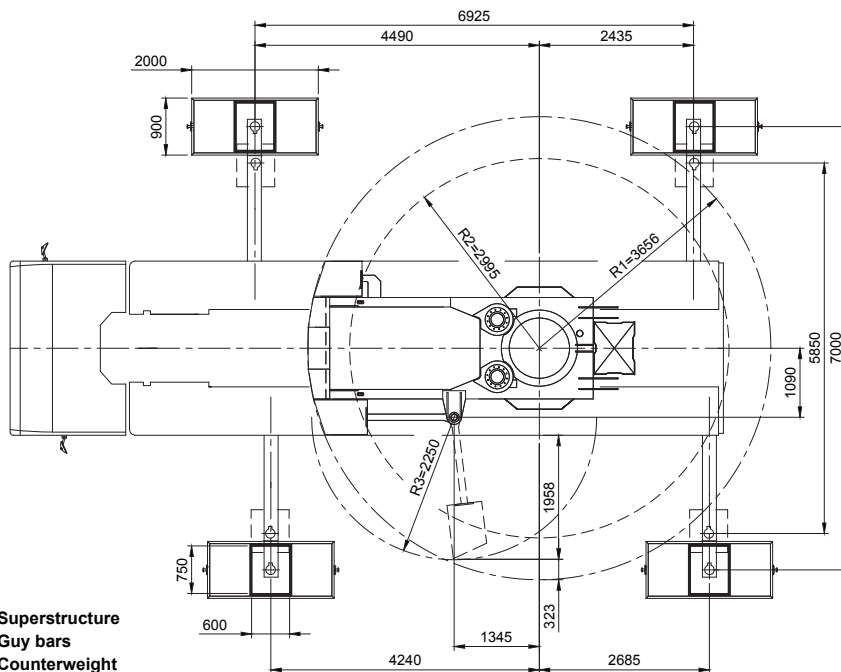
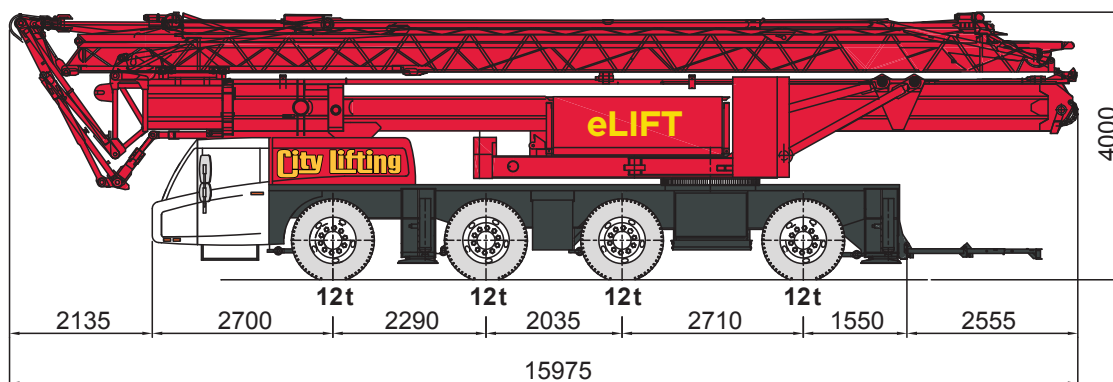
# City Lifting

CRANE HIRE SPECIALISTS

## MOBILE TOWER CRANES

[www.citylifting.co.uk](http://www.citylifting.co.uk)

The Spierings SK597e Lift crane can work on sites emission free if connected to a small electricity supply whilst working on site. 3 Phase electrical connection of either 32 amps or 16 amps is sufficient to run the crane all day. **PLEASE NOTE** this crane has a larger counterweight radius of 3886mm instead of 3550



R1 : Superstructure  
R2 : Guy bars  
R3 : Counterweight

### Outrigger support base

Max. outrigger force	360 kN
Outrigger support plates	2000x900 mm
Surface	1,80 m <sup>2</sup>
Ground pressure	200kN/m <sup>2</sup>

Please note slewing counter weight radius is greater on the eLift SK597.

R1=3886