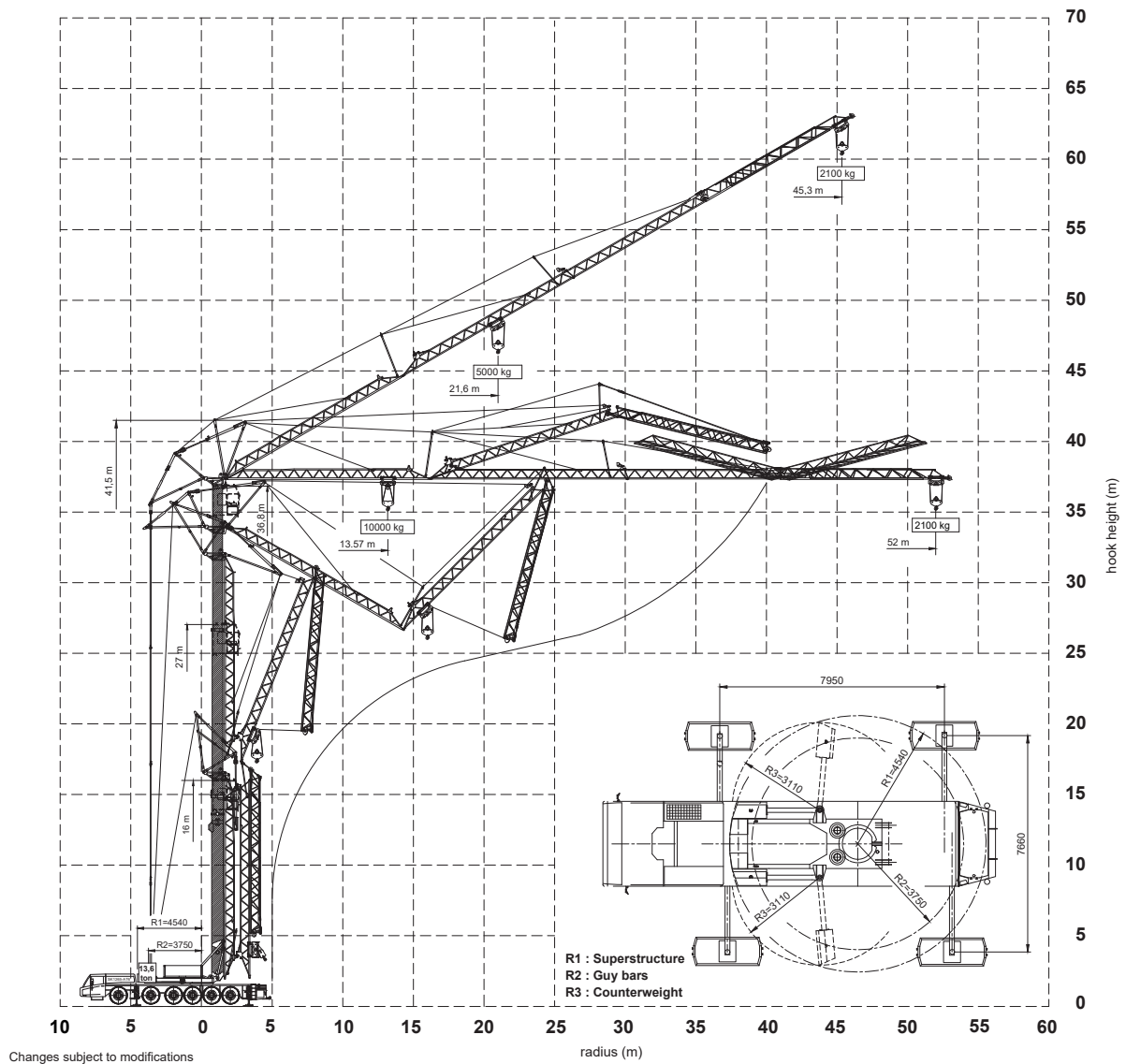




# SPIERINGS SK 12565 AT6

## MOBILE TOWER CRANES



Outrigger support base	
Max. outrigger force	520 kN
Outrigger support pads	750x600 mm
Ground pressure	1,15 N/mm <sup>2</sup>
Outrigger support plates	2500x1000 mm
Surface	2,35 m <sup>2</sup>
Ground pressure	221kN/m <sup>2</sup>

# SPIERINGS SK 12565 AT6

## MOBILE TOWER CRANES

Speeds		Jib horizontal / jib 30° luffed		All motions with hydraulic proportional controls Luffing the jib 30° can be controlled from crane cab or via remote control The crane should be folded in at a wind force > 8 on the Beaufort scale (wind speed 20 m/min)		Crane equipped with full counterweight: 13600 kg 360° continuous slewing : with outriggers out and down Operating temperature : range from -15° to 40° C.		Rated lifting capacity is net capacity Max. line pull force : 2500 kg 2 parts of line : 5000 kg - 1700 kg 4 parts of line : 10000 kg - 5000 kg Sail area of the load : max. 1.0 m <sup>2</sup> / tonne Max. outrigger loading: 520 kN		Outrigger position : 7,95 x 7,66 m Operation allowed up to a wind force of 7 on the Beaufort scale (wind speed 14m/sec) Outrigger position : 7,95 x 5,72 m Operation allowed up to a wind force of 7 on the Beaufort scale (wind speed 14 m/sec)																									
15	10000			0 - 70 m/min																															
30	5000			0-0,7 r/min																															
45	2500																																		
75	0																																		
<b>Lifting chart</b>																																			
<b>Outrigger spread : 7,95 m x 7,66 m</b>																																			
<b>Jib horizontal</b>																																			
3.5	10000	13,2	15	20	25	30	35	40	45	50	55	60	radius (m)	load (kg)																					
		9335	7985	6965	6170	5530	5000	4960	4190	3870	3590	3130	2940	2770	2615	2475	2345	2230	2125	2025	1935	1850	1775	1700											
36	Jib 30° luffed	46,2	48,5	51,35	54,25	57,15	60	62,9	64,2	hook height (m)																									
3.5	5000	21	25	30	35	40	45	50	52,2	radius (m)																									
		4740	4285	3905	3580	3305	3065	2855	2650	2500	2350	2220	2095	1985	1885	1795	1700	load (m)																	
		5000	4500	4085	3735	3440	3180	2955	2755	2580	2425	2285	2155	2040	1935	1840	1750																		
<b>Lifting chart</b>																																			
<b>Outrigger spread : 7,95 m x 5,72 m</b>																																			
<b>Jib horizontal</b>																																			
3.5	10000	8,1	10	15	20	25	30	35	40	45	50	55	60	radius (m)	load (kg)																				
		10000	7685	6695	5085	4325	3755	3305	2945	2650	2405	2195	1860	1725	1605	1495	1400	1315	1235	1165	1100	1040	985	930	885	840	800								
36	Jib 30° luffed	41,3	42,7	45,6	48,5	51,35	54,25	57,15	60	62,9	64,2	hook height (m)																							
3.5	5000	12,5	15	20	25	30	35	40	45	50	52,2	radius (m)																							
		5000	4355	3700	3205	2815	2505	2250	2035	1855	1700	1565	1445	1340	1250	1165	1090	1025	960	905	850	800	load (m)												
		4770	4005	3435	3000	2655	2370	2140	1945	1775	1630	1505	1395	1295	1205	1125	1055	990	930	880	830														

**No need to deduct the hook block weights as it is a permanent part of the crane.**