

SPIERINGS SK487-AT3 / CITY BOY

City Lifting

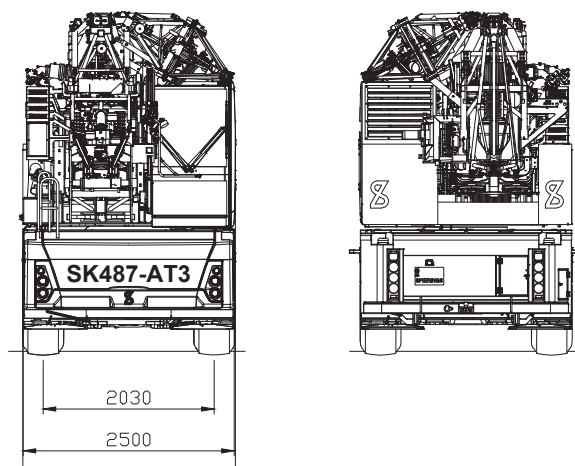
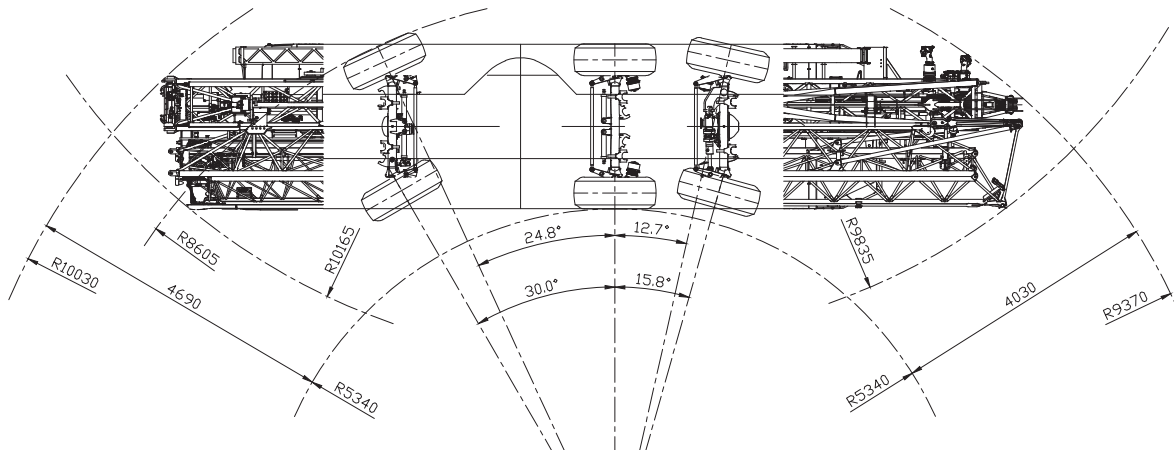
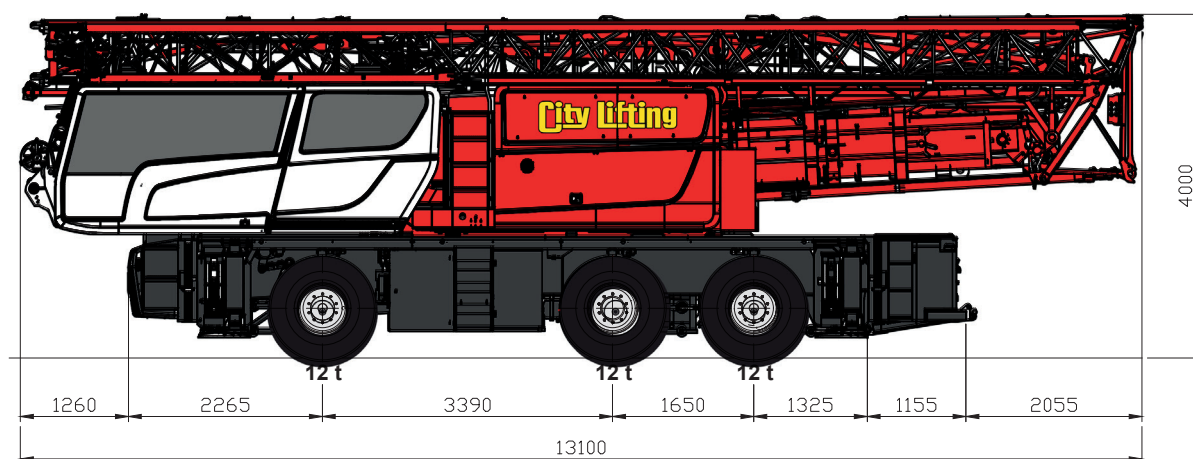
CRANE HIRE SPECIALISTS

ZERO EMISSIONS

MOBILE TOWER CRANES

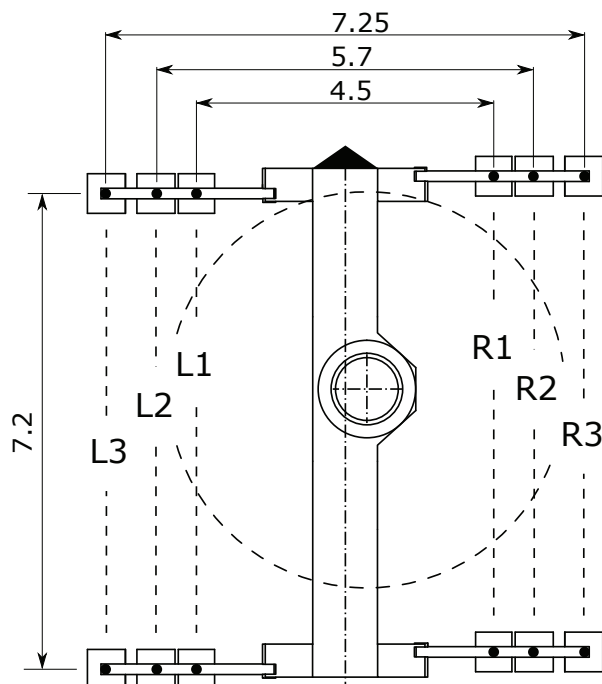
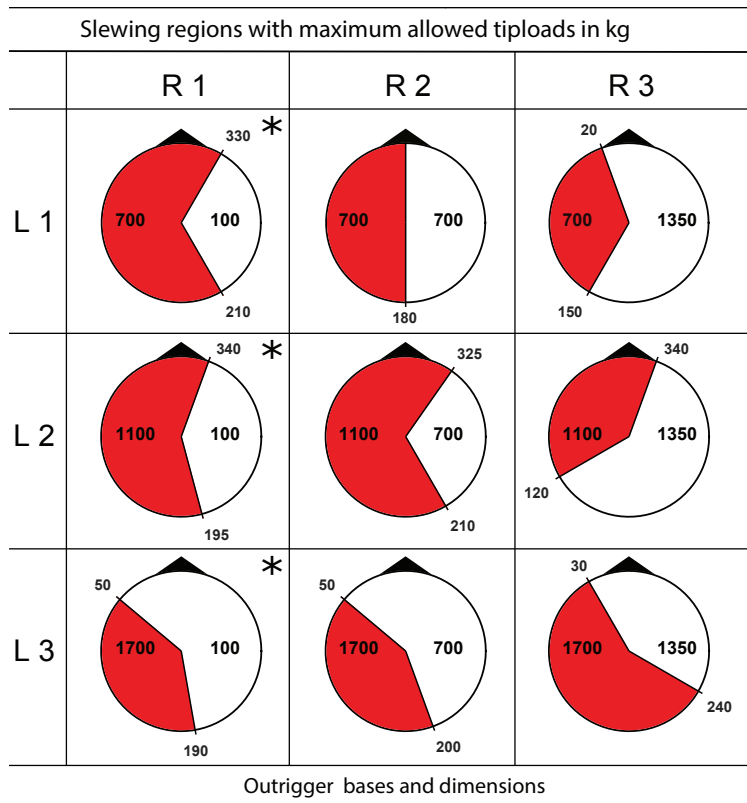
www.citylifting.co.uk

The Spierings City Boy is the only mobile crane that can both travel and work completely emission free. We charge it overnight in our depot and it can work all day using a small site electrical supply. It is a hybrid machine and can work with its own engine if a power supply isn't available. The crane has a very small footprint on site and can complete lifts no other crane could.



SPIERINGS SK487-AT3 / CITY BOY

MOBILE TOWER CRANES



Reading the tables

1. The front of the crane as driven on to site is the black arrow
2. The Outriggers have to be extended to the same length or same position on the side of the crane. (Position 1,2 or 3).
3. Using the pictogram you can determine the tip load for the slewing angle.
4. Once you have the tip load for the lifting area the duties can be found in the tip load charts.
5. Pay close attention to the allowable working windspeeds with short outriggers.

Windforce is measured in meters per second.

Max. windforce up to:

WK	R ₁	R ₂	R ₃
L ₁	10	10	10
L ₂	10	14	14
L ₃	10	14	20

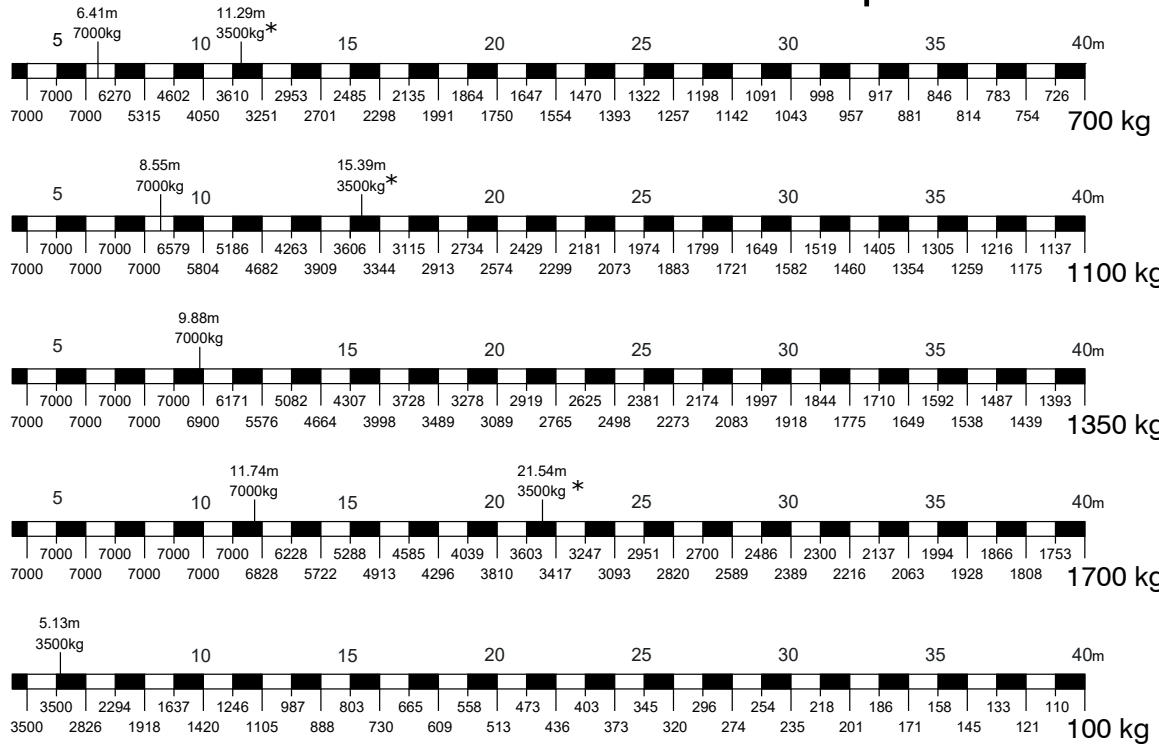
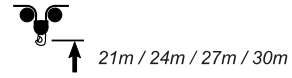
- Hook heights with horizontal jib:
 - 21m / 24m / 27m / 30m.
- Max. outrigger force: 315 kN.

* When using R1, where the allowed tipload is 100 kg, the max. hoist load is lowered to 3500kg in both regions.

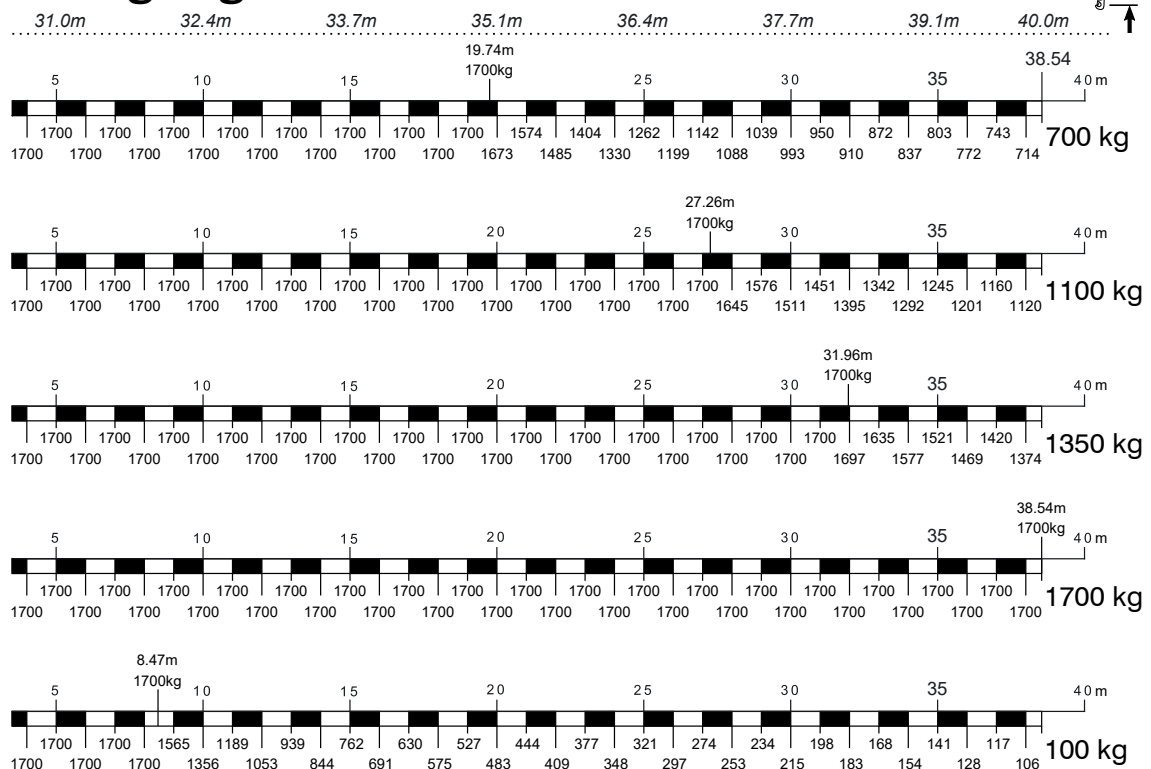
SPIERINGS SK487-AT3 / CITY BOY

MOBILE TOWER CRANES

Luffing angle 0°



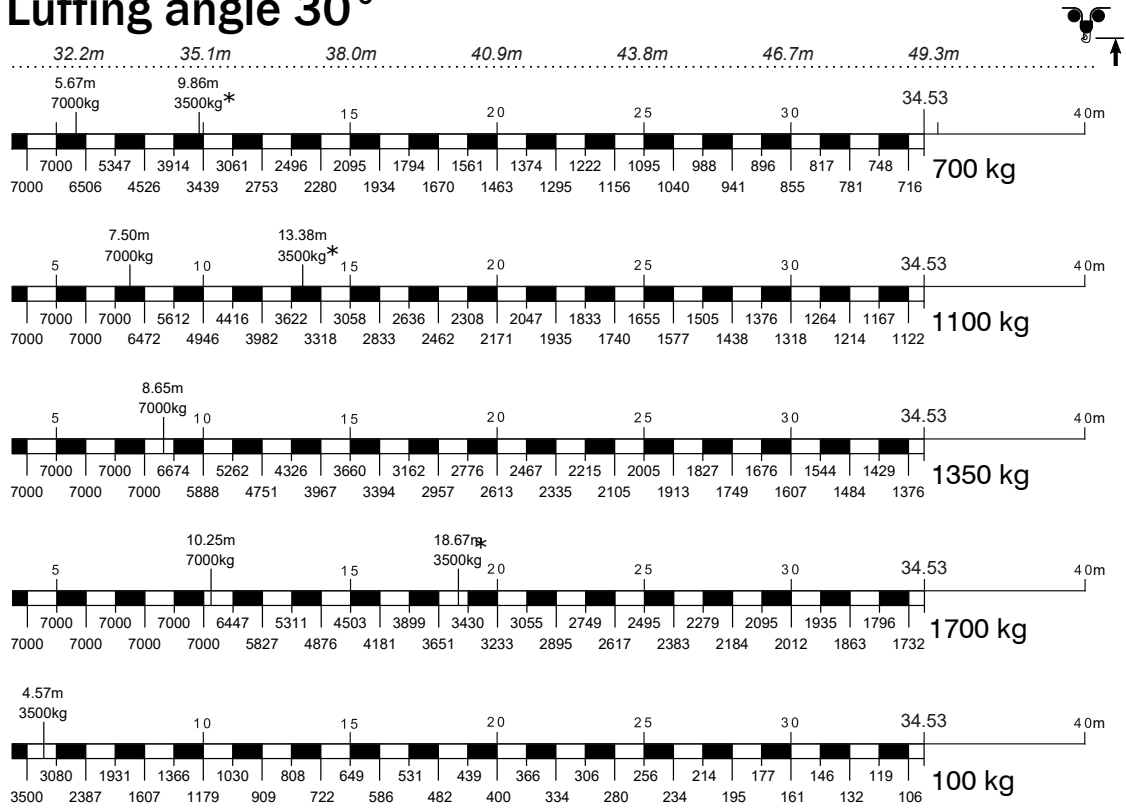
Luffing angle 15°



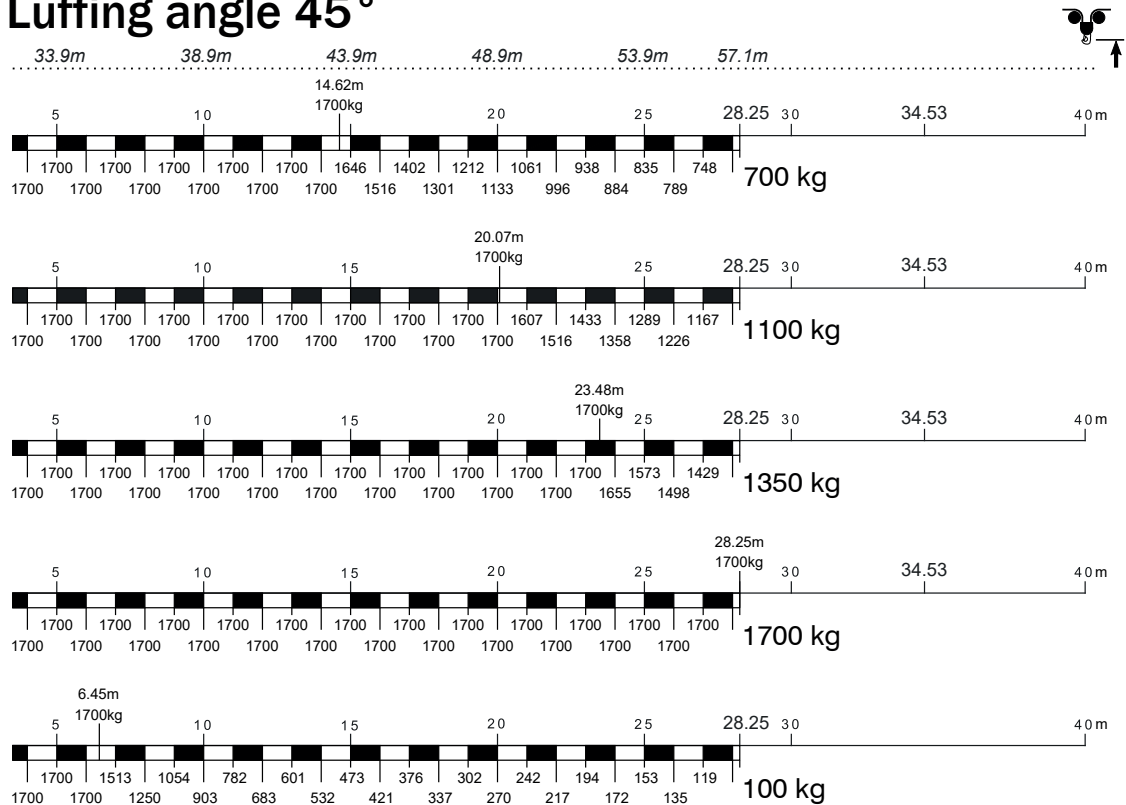
SPIERINGS SK487-AT3 / CITY BOY

MOBILE TOWER CRANES

Luffing angle 30°

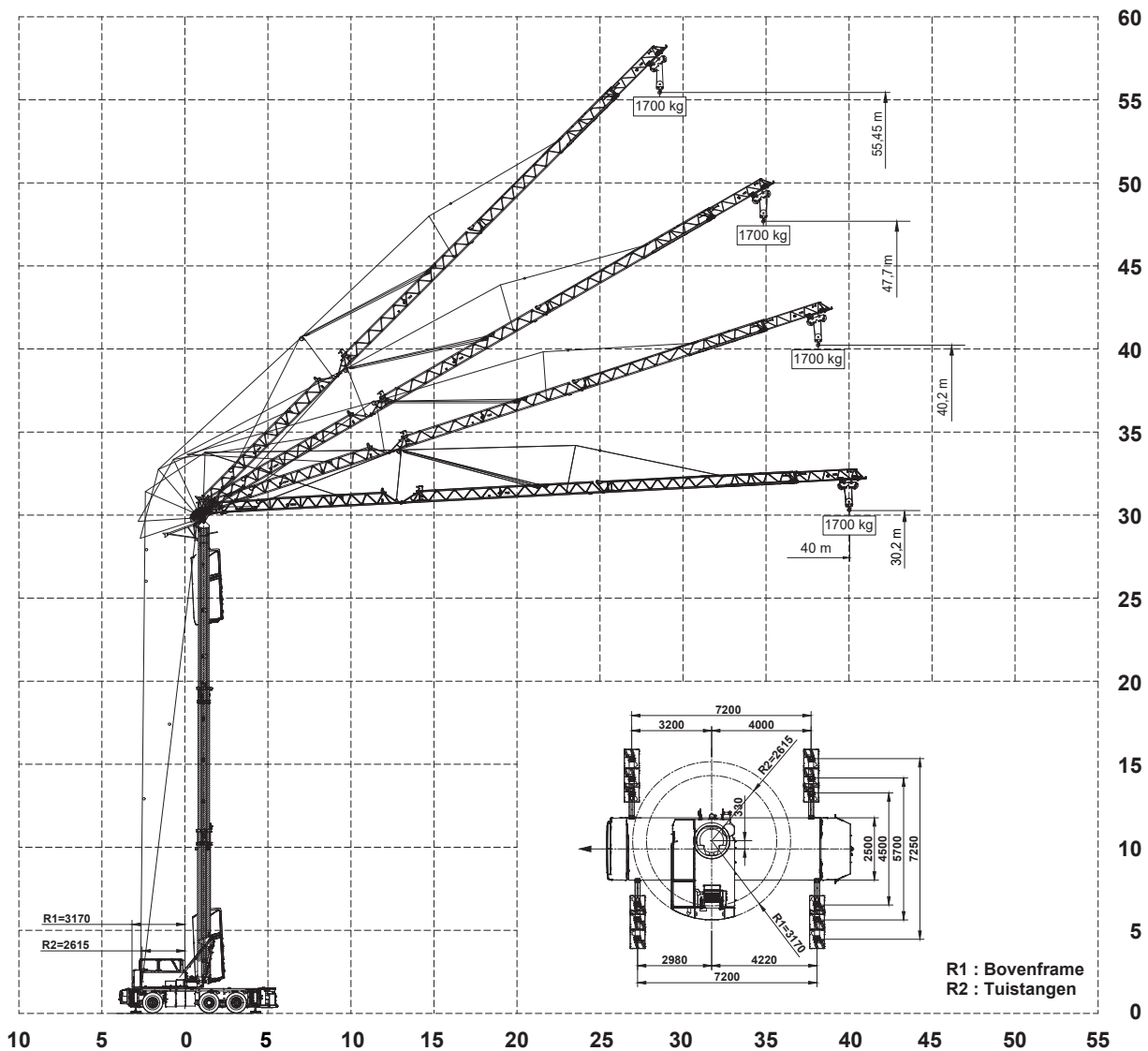


Luffing angle 45°



SPIERINGS SK487-AT3 / CITY BOY

MOBILE TOWER CRANES



Overview Outriggers	
Max. outrigger force	315 kN
Size outrigger plate	750x600 mm
Ground pressure	0,71 N/mm ²
Size outrigger support plate	1000x900 mm
Ground pressure	0,35 N/mm ²

SPIERINGS SK487-AT3 / CITY BOY

MOBILE TOWER CRANES

